

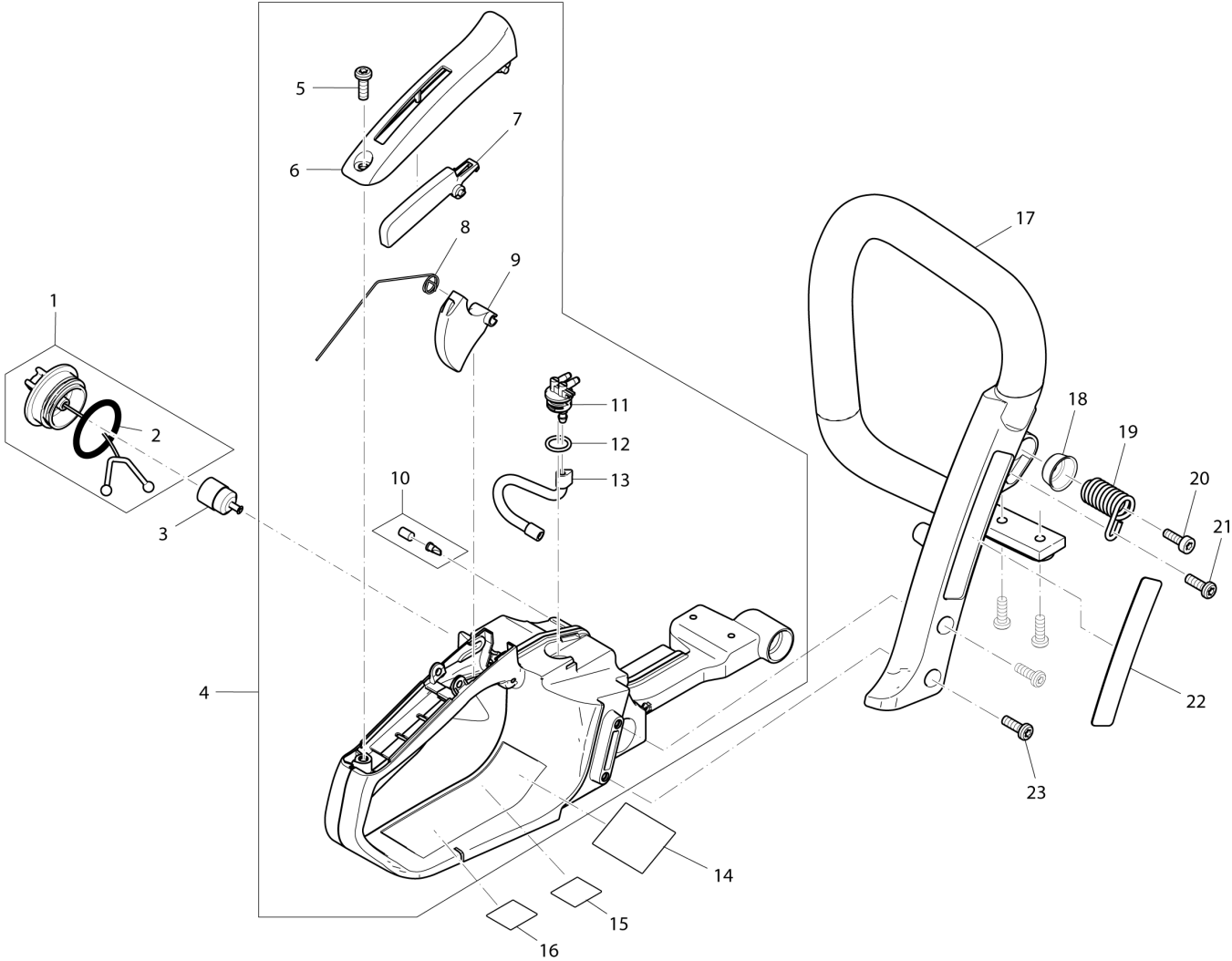


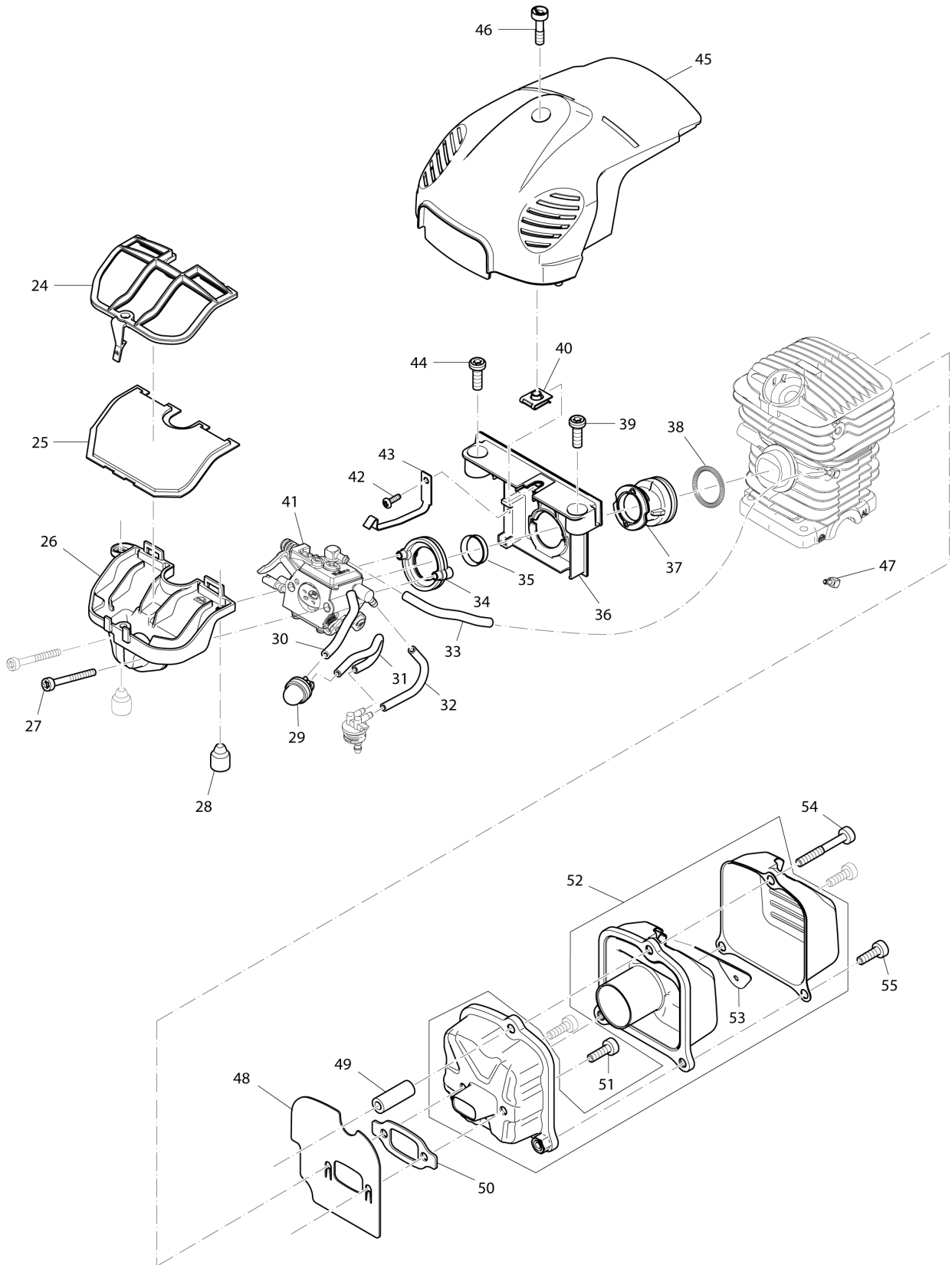
DE	GERMANY
----	---------

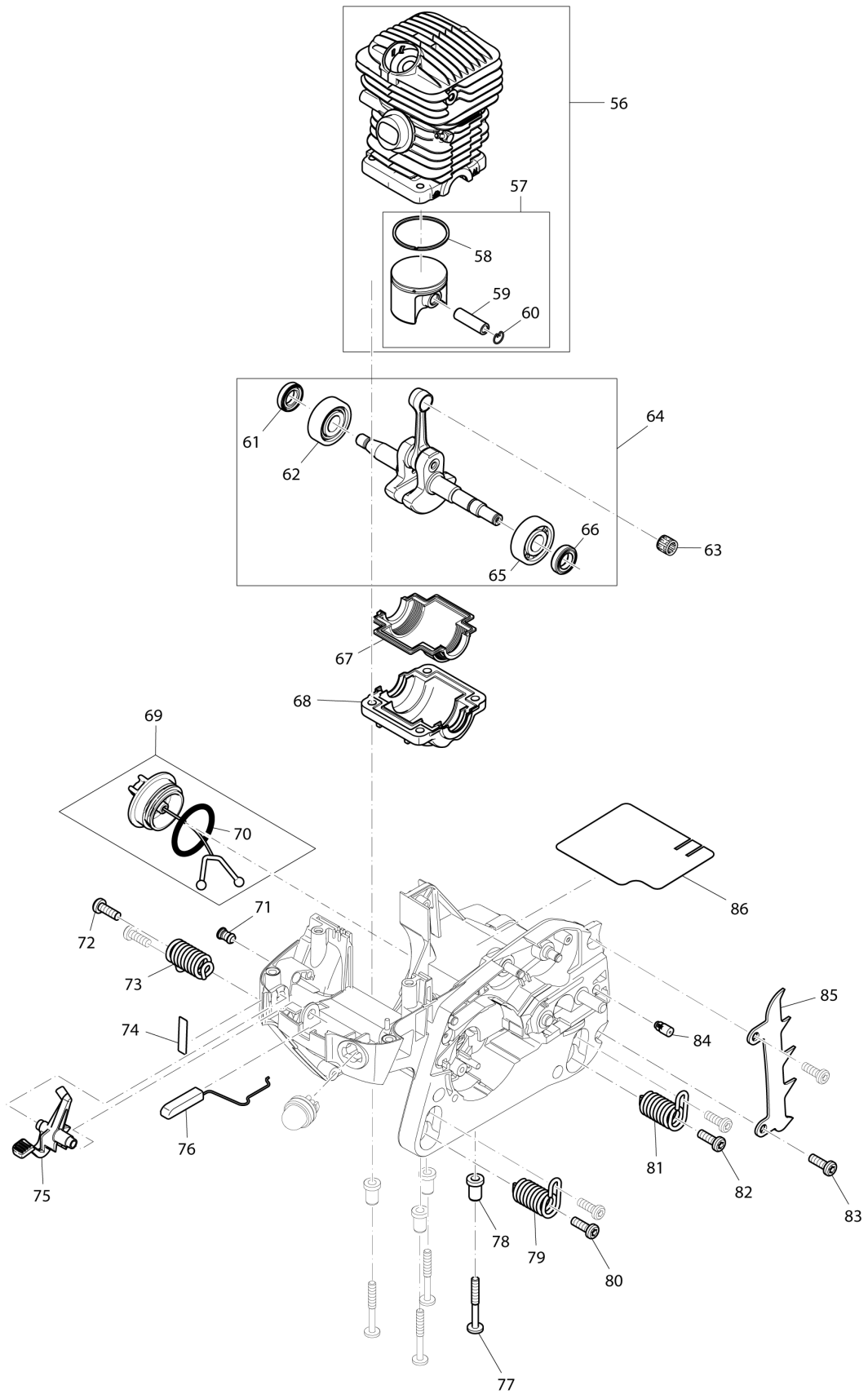
# Diagram / Parts List

**PS32C**

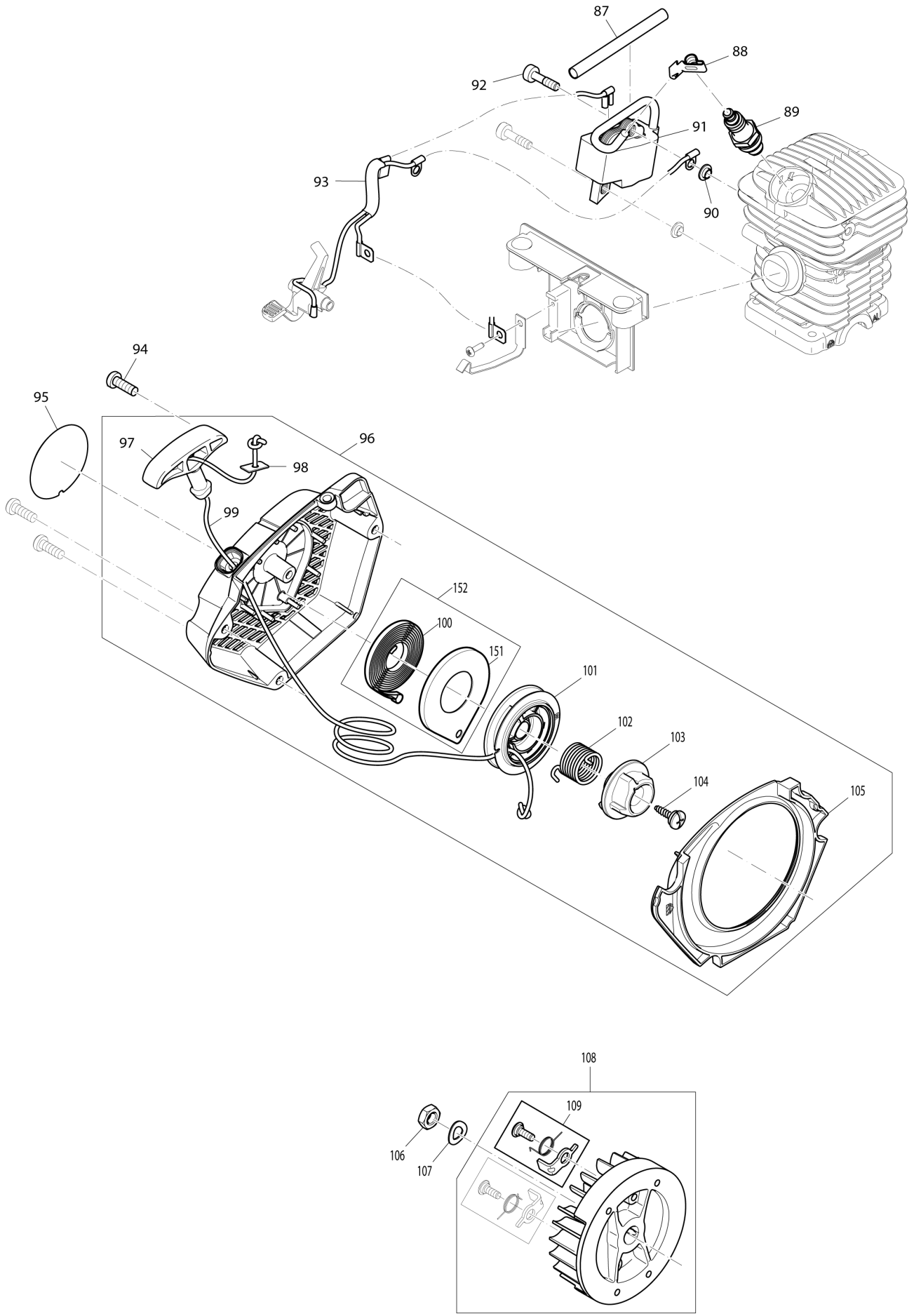
**PETROL CHAIN SAW**



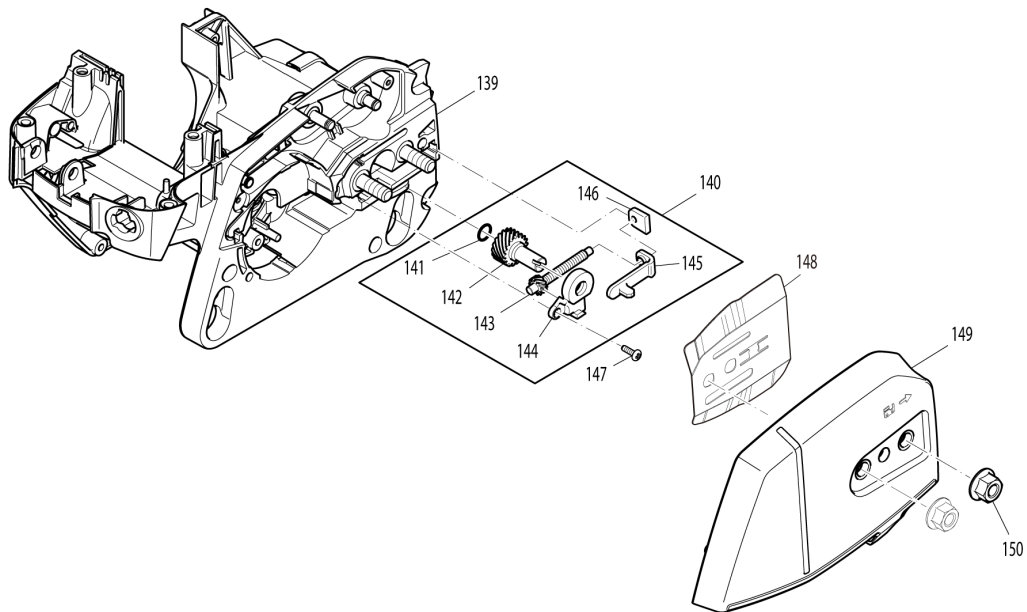
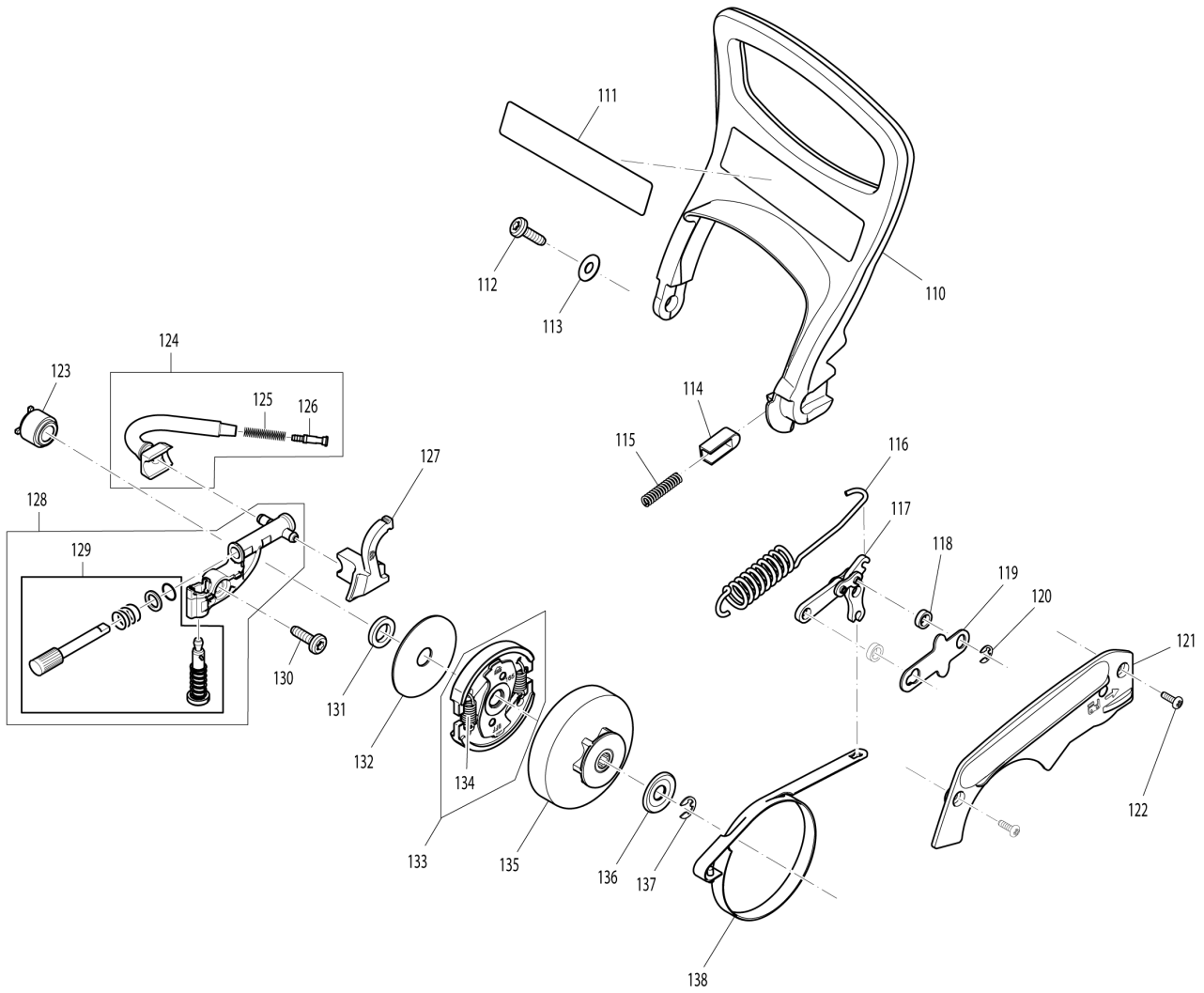




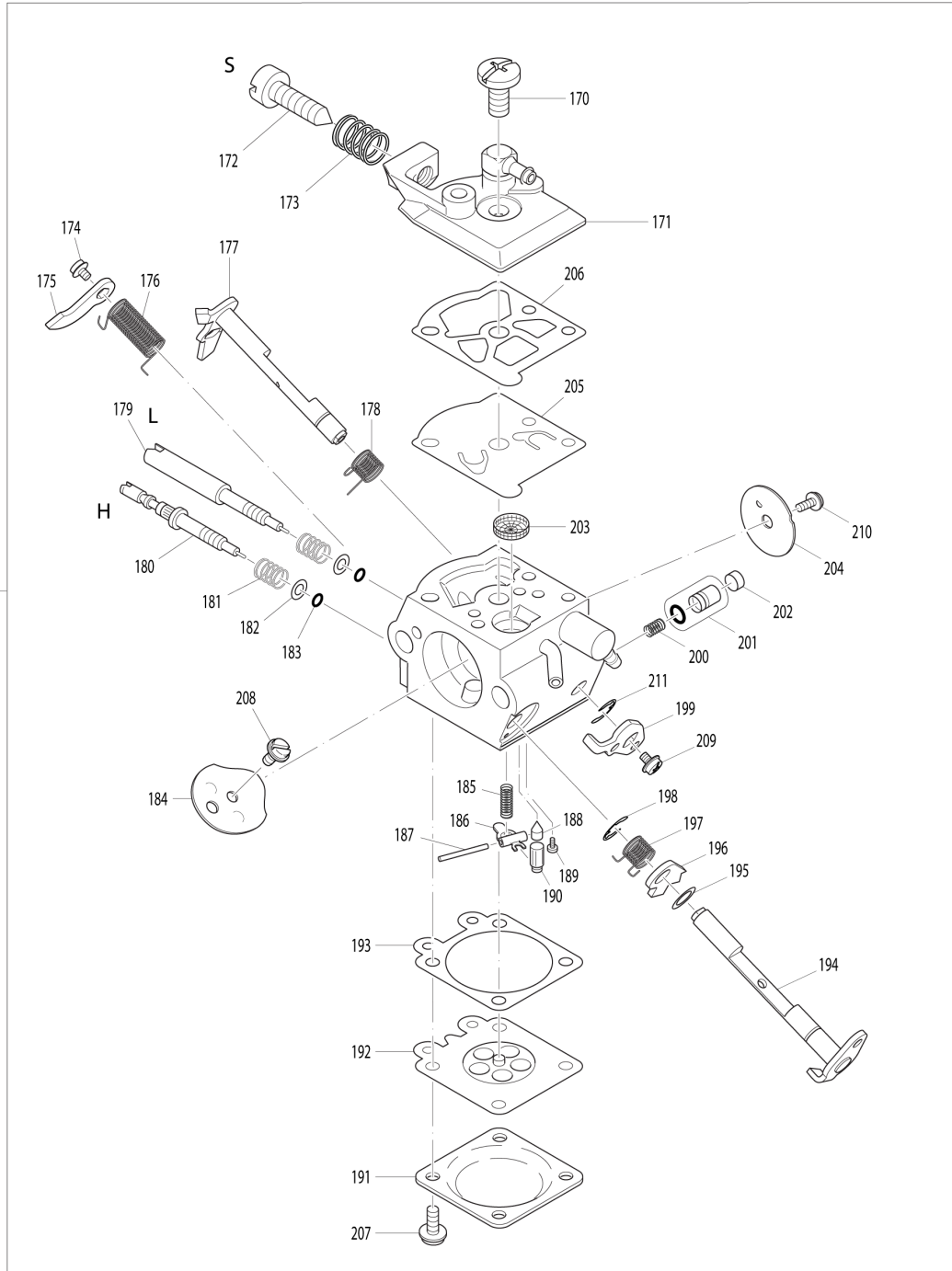
(DE) PS32C / PETROL CHAIN SAW



(DE) PS32C / PETROL CHAIN SAW



41



<b>DE</b>	<b>GERMANY</b>
-----------	----------------

### PS32C / PETROL CHAIN SAW

Item	Sub	Parts No.	Parts Description	Qty	I/C	E/C No.	Close No.	Remark
001D		168507-3	TANK CAP COMPLETE	1			99471	
	D10		INC. 2				99471	
001E		168507-3	TANK CAP COMPLETE	1			99471	
	D10		INC. 2				99471	
001F		168507-3	TANK CAP COMPLETE	1			99471	
	D10		INC. 2				99471	
001-1D		168823-3	TANK CAP COMPLETE	1	O	99471		
	D10		INC. 2			99471		
001-1E		168823-3	TANK CAP COMPLETE	1	O	99471		
	D10		INC. 2			99471		
001-1F		168823-3	TANK CAP COMPLETE	1	O	99471		
	D10		INC. 2			99471		
001-1G		168823-3	TANK CAP COMPLETE	1				
	D10		INC. 2					
002		213080-9	O RING 29.5	1				
003D		163447-0	FUEL FILTER	1			B3537	
003E		163447-0	FUEL FILTER	1			B3537	
003F		163447-0	FUEL FILTER	1			B3537	
003-1D		163447-0	FUEL FILTER	1	O	B3537		
003-1E		163447-0	FUEL FILTER	1	O	B3537		
003-1F		163447-0	FUEL FILTER	1	O	B3537		
003-1G		163447-0	FUEL FILTER	1				
004		195757-7	TANK ASSEMBLY A RED	1				
	D10		INC. 5-13					
005		266651-1	H.L. TAPPING SCREW 5.5X16	1				
006		452021-2	GRIP SHELL	1				
007		452020-4	CATCH LEVER	1				
008		231866-9	TORSION SPRING 10	1				
009		452019-9	THROTTLE LEVER	1				
010		195762-4	AIR VALVE SET	1				
011		452018-1	FUEL NIPPLE	1				
012		213586-7	O RING 11.5	1				
013		424456-7	FUEL LINE	1				
014		869078-0	PS-32C NAME PLATE	1				
017		452036-9	TUBULAR HANDLE	1				
018		346517-2	CUP WASHER 6	1				
019		234189-4	COMPRESSION SPRING 12	1				
020		266605-8	H.L. SOCKET HEAD BOLT M5X16	1				
021		266651-1	H.L. TAPPING SCREW 5.5X16	1				
022		891899-2	DOLMAR LOGO LABEL	1				
023		266651-1	H.L. TAPPING SCREW 5.5X16	4				
024		452031-9	AIR FILTER COVER	1				
025		423414-0	AIR FILTER	1				
026		452030-1	INTAKE MANIFOLD	1				
027		266604-0	H.L. SOCKET HEAD BOLT M4X40	2				
028		424173-9	DAMPING PLUG	2				
029		168398-2	PRIMER PUMP	1				
030		422067-2	TUBE 2.5-55	1				
031		422065-6	TUBE 2.5-112	1				
032		422068-0	TUBE 3-70	1				
033		422066-4	TUBE 2.5-72	1				
034		318634-8	FLANGE RING	1				
035		346413-4	BUSH 17	1				
036		452024-6	INTERMEDIATE FLANGE	1				
037		424340-6	INTAKE HOSE	1				
038		233971-8	RING SPRING	1				
039		266651-1	H.L. TAPPING SCREW 5.5X16	1				
040		264044-6	SNAP NUT M5	1				
041D		168602-9	CARBURETOR	1			A1874	
	D10		INC. 170-211				A1874	
041E		168602-9	CARBURETOR	1			A1874	
	D10		INC. 170-211				A1874	
041F		168602-9	CARBURETOR	1			A1874	
	D10		INC. 170-211				A1874	
041-1D		168849-5	CARBURETOR	1	O	A1874		

D:PS-32C(N)  
E:PS-32C(N)  
F:PS-32 C(N)  
G:PS32CA35X(N)

Interchange  
O : Yes  
X : No  
< : the new part can be substituted for the current.  
> : the current part can be substituted for the new.  
S : Interchangeable as a set.



<b>DE</b>	<b>GERMANY</b>
-----------	----------------

### PS32C / PETROL CHAIN SAW

Item	Sub	Parts No.	Parts Description	Qty	I/C	E/C No.	Close No.	Remark
	D10		INC. 170,171,174-180,184-189			A1874		
	D20		INC. 191-210,213-217			A1874		
041-1E		168849-5	CARBURETOR	1	O	A1874		
	D10		INC. 170,171,174-180,184-189			A1874		
	D20		INC. 191-210,213-217			A1874		
041-1F		168849-5	CARBURETOR	1	O	A1874		
	D10		INC. 170,171,174-180,184-189			A1874		
	D20		INC. 191-210,213-217			A1874		
041-1G		168849-5	CARBURETOR	1				
	D10		INC. 170,171,174-180,184-189					
	D20		INC. 191-210,213-217					
042		266421-8	TAPPING SCREW 3X10	1				
043		346290-4	CONTACT SPRING	1				
044		266651-1	H.L. TAPPING SCREW 5.5X16	1				
045		452023-8	HOOD	1			C7407	
045-1		452023-8	HOOD	1	O	C7407		
046		266607-4	H.L. SOCKET HEAD BOLT M5X20	1				
047D		325938-1	ANGULAR NIPPLE	1			98018	
047E		325938-1	ANGULAR NIPPLE	1			98018	
047F		325938-1	ANGULAR NIPPLE	1			98018	
048		346306-5	COOLING PLATE	1				
049		325939-9	CONNECTING LINK	1				
050		346304-9	GASKET	1				
051		266605-8	H.L. SOCKET HEAD BOLT M5X16	2				
052		168604-5	MUFFLER COMPLETE	1				
	D10		INC. 53					
053		346294-6	SPARK ARRESTER SCREEN	1				
054		266606-6	H.L. SOCKET HEAD BOLT M5X40	1				
055		266605-8	H.L. SOCKET HEAD BOLT M5X16	2				
056D		195759-3	CYLINDER PISTON SET	1			98018	
	D10		INC. 57				98018	
056E		195759-3	CYLINDER PISTON SET	1			98018	
	D10		INC. 57				98018	
056F		195759-3	CYLINDER PISTON SET	1			98018	
	D10		INC. 57				98018	
056-1D		196384-3	CYLINDER PISTON SET	1	S	98018		
	C10	142136-0	CYLINDER COMPLETE	1		98018		
	D10		INC. 57			98018		
056-1E		196384-3	CYLINDER PISTON SET	1	S	98018		
	C10	142136-0	CYLINDER COMPLETE	1		98018		
	D10		INC. 57			98018		
056-1F		196384-3	CYLINDER PISTON SET	1	S	98018		
	C10	142136-0	CYLINDER COMPLETE	1		98018		
	D10		INC. 57			98018		
056-1G		196384-3	CYLINDER PISTON SET	1				
	C10	142136-0	CYLINDER COMPLETE	1				
	D10		INC. 57					
057		195760-8	PISTON SET	1				
	D10		INC. 58-60					
058		325991-7	PISTON RING 38	1				
059		325992-5	PISTON PIN 8	1				
060		233988-1	RING SPRING 8	1				
061D		213582-5	OIL SEAL 12	1			A9612	
061E		213582-5	OIL SEAL 12	1			A9612	
061F		213582-5	OIL SEAL 12	1			A9612	
061-1D		213084-1	OIL SEAL 12	1	S	A9612		
061-1E		213084-1	OIL SEAL 12	1	S	A9612		
061-1F		213084-1	OIL SEAL 12	1	S	A9612		
061-1G		213084-1	OIL SEAL 12	1				
062		211341-1	BALL BEARING 6201	1				
063		212086-4	NEEDLE CAGE 810	1				
064D		195956-1	CRANK SHAFT SET	1			A9612	
	D10		INC. 61,62,65,66				A9612	
064E		195956-1	CRANK SHAFT SET	1			A9612	
	D10		INC. 61,62,65,66				A9612	

D:PS-32C(N)  
E:PS-32C(N)  
F:PS-32 C(N)  
G:PS32CA35X(N)

Interchange  
O : Yes  
X : No  
< : the new part can be substituted for the current.  
> : the current part can be substituted for the new.  
S : Interchangeable as a set.

<b>DE</b>	<b>GERMANY</b>
-----------	----------------

**PS32C / PETROL CHAIN SAW**

Item	Sub	Parts No.	Parts Description	Qty	I/C	E/C No.	Close No.	Remark
064F		195956-1	CRANK SHAFT SET	1			A9612	
	D10		INC. 61,62,65,66				A9612	
064-1D		197539-3	CRANK SHAFT SET	1	<	A9612		
	D10		INC. 61,62,65,66			A9612		
064-1E		197539-3	CRANK SHAFT SET	1	<	A9612		
	D10		INC. 61,62,65,66			A9612		
064-1F		197539-3	CRANK SHAFT SET	1	<	A9612		
	D10		INC. 61,62,65,66			A9612		
064-1G		197539-3	CRANK SHAFT SET	1				
	D10		INC. 61,62,65,66					
065		211341-1	BALL BEARING 6201	1				
066D		213582-5	OIL SEAL 12	1			A9612	
066E		213582-5	OIL SEAL 12	1			A9612	
066F		213582-5	OIL SEAL 12	1			A9612	
066-1D		213084-1	OIL SEAL 12	1	S	A9612		
066-1E		213084-1	OIL SEAL 12	1	S	A9612		
066-1F		213084-1	OIL SEAL 12	1	S	A9612		
066-1G		213084-1	OIL SEAL 12	1				
067		424339-1	CRANK CASE SEALING	1			C3232	
067-1		424872-3	CRANK CASE SEALING	1	O	C3232		
068		318633-0	CRANKCASE UNDERSIDE	1				
069D		168507-3	TANK CAP COMPLETE	1			99471	
	D10		INC. 70				99471	
069E		168507-3	TANK CAP COMPLETE	1			99471	
	D10		INC. 70				99471	
069F		168507-3	TANK CAP COMPLETE	1			99471	
	D10		INC. 70				99471	
069-1D		168823-3	TANK CAP COMPLETE	1	O	99471		
	D10		INC. 70			99471		
069-1E		168823-3	TANK CAP COMPLETE	1	O	99471		
	D10		INC. 70			99471		
069-1F		168823-3	TANK CAP COMPLETE	1	O	99471		
	D10		INC. 70			99471		
069-1G		168823-3	TANK CAP COMPLETE	1				
	D10		INC. 70					
070		213080-9	O RING 29.5	1				
071D		452629-2	PLUG	1			96384	
071E		452629-2	PLUG	1			96384	
071-1D		452727-2	PLUG	1	O	96384	A1874	
071-1E		452727-2	PLUG	1	O	96384	A1874	
071-1F		452727-2	PLUG	1			A1874	
072		266651-1	H.L. TAPPING SCREW 5.5X16	2				
073		234189-4	COMPRESSION SPRING 12	1				
074		816917-5	INDICATION LABEL	1				
075		452025-4	CHOKE LEVER	1				
076		452022-0	THROTTLE LINKAGE	1				
077		266608-2	H.L.TAPPING SCREW 5X40	4				
078		325946-2	BUSH 6	4				
079		234189-4	COMPRESSION SPRING 12	1				
080		266651-1	H.L. TAPPING SCREW 5.5X16	2				
081		234189-4	COMPRESSION SPRING 12	1				
082		266651-1	H.L. TAPPING SCREW 5.5X16	2				
083		266651-1	H.L. TAPPING SCREW 5.5X16	2				
084		168504-9	VENT VALVE	1				
085		346301-5	SPIKE BAR	1				
086		346385-3	HEAT PROTECTION FOIL	1				
087D		444029-0	ISOLATING TUBE 6-95	1			97296	
087E		444029-0	ISOLATING TUBE 6-95	1			97296	
087F		444029-0	ISOLATING TUBE 6-95	1			97296	
087-1D		444042-8	ISOLATING TUBE 6-80	1	<	97296		
087-1E		444042-8	ISOLATING TUBE 6-80	1	<	97296		
087-1F		444042-8	ISOLATING TUBE 6-80	1	<	97296		
087-1G		444042-8	ISOLATING TUBE 6-80	1				
088D		346445-1	SPARK PLUG CONNECTOR	1			97296	
088E		346445-1	SPARK PLUG CONNECTOR	1			97296	

D:PS-32C(N)  
E:PS-32C(N)  
F:PS-32 C(N)  
G:PS32CA35X(N)

Interchange  
O : Yes  
X : No  
< : the new part can be substituted for the current.  
> : the current part can be substituted for the new.  
S : Interchangeable as a set.

<b>DE</b>	<b>GERMANY</b>
-----------	----------------

### PS32C / PETROL CHAIN SAW

Item	Sub	Parts No.	Parts Description	Qty	I/C	E/C No.	Close No.	Remark
088F		346445-1	SPARK PLUG CONNECTOR	1			97296	
088-1D		424522-0	PLUG CAP	1	S	97296		
088-1E		424522-0	PLUG CAP	1	S	97296		
088-1F		424522-0	PLUG CAP	1	S	97296		
088-1G		424522-0	PLUG CAP	1				
089D		168599-2	SPARK PLUG NGK CMR7A-5	1			94253	
089E		168599-2	SPARK PLUG NGK CMR7A-5	1			94253	
089-1D		168401-9	SPARK PLUG	1	O	94253		
089-1E		168401-9	SPARK PLUG	1	O	94253		
089-1F		168401-9	SPARK PLUG	1				
089-1G		168401-9	SPARK PLUG	1				
090		452670-5	ISOLATING WASHER	2				
091D		125808-2	IGNITION COIL ASSEMBLY	1			97296	
	D10		INC. 87,88				97296	
091E		125808-2	IGNITION COIL ASSEMBLY	1			97296	
	D10		INC. 87,88				97296	
091F		125808-2	IGNITION COIL ASSEMBLY	1			97296	
	D10		INC. 87,88				97296	
091-1D		126270-4	IGNITION COIL ASSEMBLY	1	<	97296	DB428	
	C10	326210-4	TERMINAL SPRING	1		97296	DB428	
	D10		INC. 87,88			97296	DB428	
091-1E		126270-4	IGNITION COIL ASSEMBLY	1	<	97296	DB428	
	C10	326210-4	TERMINAL SPRING	1		97296	DB428	
	D10		INC. 87,88			97296	DB428	
091-1F		126270-4	IGNITION COIL ASSEMBLY	1	<	97296	DB428	
	C10	326210-4	TERMINAL SPRING	1		97296	DB428	
	D10		INC. 87,88			97296	DB428	
091-1G		126270-4	IGNITION COIL ASSEMBLY	1			DB428	
	C10	326210-4	TERMINAL SPRING	1			DB428	
	D10		INC. 87,88				DB428	
091-2		126270-4	IGNITION COIL ASSEMBLY	1	O	DB428		
	C10	326210-4	TERMINAL SPRING	1		DB428		
	D10		INC. 87,88			DB428		
092		266631-7	H.L. SOCKET HEAD BOLT M5X20	2				
093		168601-1	CABLE HARNESS	1				
094		266651-1	H.L. TAPPING SCREW 5.5X16	3				
095		819544-7	PS-32 MODEL NO. LABEL	1				
096D		168603-7	STARTER COMPLETE	1			A6201	
	D10		INC. 97-99,101-105,152				A6201	
096E		168603-7	STARTER COMPLETE	1			A6201	
	D10		INC. 97-99,101-105,152				A6201	
096F		168603-7	STARTER COMPLETE	1			A6201	
	D10		INC. 97-99,101-105,152				A6201	
096-1D		161327-4	STARTER COMPLETE	1	O	A6201		
	D10		INC. 97-99,101-105,152			A6201		
096-1E		161327-4	STARTER COMPLETE	1	O	A6201		
	D10		INC. 97-99,101-105,152			A6201		
096-1F		161327-4	STARTER COMPLETE	1	O	A6201		
	D10		INC. 97-99,101-105,152			A6201		
096-1G		161327-4	STARTER COMPLETE	1				
	D10		INC. 97-99,101-105,152					
097		453783-5	STARTER GRIP	1				
098		267847-7	SQUARE WASHER 4	1				
099		444038-9	STARTER ROPE	1				
100D		234252-3	REWIND SPRING	1			Y06570	
100E		234252-3	REWIND SPRING	1			Y06570	
100F		234252-3	REWIND SPRING	1			Y06570	
101D		453785-1	REEL	1			A6201	
101E		453785-1	REEL	1			A6201	
101F		453785-1	REEL	1			A6201	
101-1D		455919-2	REEL	1	X	A6201		
101-1E		455919-2	REEL	1	X	A6201		
101-1F		455919-2	REEL	1	X	A6201		
101-1G		455919-2	REEL	1				
102		234253-1	TORSION SPRING 20	1				

D:PS-32C(N)  
E:PS-32C(N)  
F:PS-32 C(N)  
G:PS32CA35X(N)

Interchange  
O : Yes  
X : No  
< : the new part can be substituted for the current.  
> : the current part can be substituted for the new.  
S : Interchangeable as a set.

<b>DE</b>	<b>GERMANY</b>
-----------	----------------

### PS32C / PETROL CHAIN SAW

Item	Sub	Parts No.	Parts Description	Qty	I/C	E/C No.	Close No.	Remark
103		453786-9	CAM PLATE	1				
104		266777-9	TAPPING SCREW 5X12	1				
105		452026-2	AIR GUIDE PLATE	1				
106		264053-5	HEX. NUT M8X1	1				
107		267822-3	SPRING WASHER 8	1				
108		140480-9	FLYWHEEL COMPLETE	1				
	D10		INC. 109					
109		195761-6	RATCHET SET	2				
110		452032-7	HAND GUARD	1				
111D		810075-9	CAUTION LABEL	1			C2620	
111E		810075-9	CAUTION LABEL	1			C2620	
111F		810075-9	CAUTION LABEL	1			C2620	
111-1D		817T83-1	CAUTION LABEL	1	<	C2620	C5811	
111-1E		817T83-1	CAUTION LABEL	1	<	C2620	C5811	
111-1F		817T83-1	CAUTION LABEL	1	<	C2620	C5811	
111-1G		817T83-1	CAUTION LABEL	1			C5811	
111-2		818L12-9	CAUTION LABEL	1	<	C5811		
112		266627-8	H.L. TAPPING SCREW 4.7X16	1				
113		267066-5	FLAT WASHER 5	1				
114		313212-9	HAND GUARD GUIDE	1				
115		234210-9	COMPRESSION SPRING 3	1				
116		231868-5	TENSION SPRING 10	1				
117		163500-2	LINK PLATE COMPLETE	1				
118		325947-0	BUSH 6	2				
119		346299-6	SPACER SHEET METAL	1				
120		961011-9	STOP RING E-4	1				
121D		452033-5	BRAKE COVER	1			B9729	
121E		452033-5	BRAKE COVER	1			B9729	
121F		452033-5	BRAKE COVER	1			B9729	
121-1D		458425-6	BRAKE COVER	1	S	B9729		
121-1E		458425-6	BRAKE COVER	1	S	B9729		
121-1F		458425-6	BRAKE COVER	1	S	B9729		
121-1G		458425-6	BRAKE COVER	1				
122		266421-8	TAPPING SCREW 3X10	2				
123		452035-1	PUMP DRIVE	1				
124		168645-1	OIL SUCTION LINE COMPLETE	1				
	D10		INC. 125,126					
125		234207-8	COMPRESSION SPRING 6	1				
126		452666-6	NIPPLE	1			DA680	
126-1		452666-6	NIPPLE	1	O	DA680		
127		424342-2	OIL PRESSURE LINE	1				
128D		168503-1	OIL PUMP COMPLETE	1			A6716	
	D10		INC. 129				96388	
128E		168503-1	OIL PUMP COMPLETE	1			A6716	
	D10		INC. 129				96388	
128F		168503-1	OIL PUMP COMPLETE	1			A6716	
	D10		INC. 129				96388	
128-1D		161346-0	OIL PUMP COMPLETE	1	<	A6716		
128-1E		161346-0	OIL PUMP COMPLETE	1	<	A6716		
128-1F		161346-0	OIL PUMP COMPLETE	1	<	A6716		
128-1G		161346-0	OIL PUMP COMPLETE	1				
129D		195872-7	OIL PUMP ADJUSTMENT SET	1			96388	
129E		195872-7	OIL PUMP ADJUSTMENT SET	1			96388	
129F		195872-7	OIL PUMP ADJUSTMENT SET	1			96388	
130		266627-8	H.L. TAPPING SCREW 4.7X16	1				
131		267430-0	FLAT WASHER 10	1				
132		267431-8	FLAT WASHER 10	1				
133		168607-9	CLUTCH COMPLETE	1				
	D10		INC. 134					
134		231873-2	TENSION SPRING 5	2				
135D		140980-9	CLUTCH DRUM ASSEMBLY	1			A7152	
135E		140980-9	CLUTCH DRUM ASSEMBLY	1			A7152	
135F		140980-9	CLUTCH DRUM ASSEMBLY	1			A7152	
135-1D		140484-1	CLUTCH DRUM ASSEMBLY	1	S	A7152	B9889	
135-1E		140484-1	CLUTCH DRUM ASSEMBLY	1	S	A7152	B9889	

D:PS-32C(N)  
E:PS-32C(N)  
F:PS-32 C(N)  
G:PS32CA35X(N)

Interchange  
O : Yes  
X : No  
< : the new part can be substituted for the current.  
> : the current part can be substituted for the new.  
S : Interchangeable as a set.

<b>DE</b>	<b>GERMANY</b>
-----------	----------------

### PS32C / PETROL CHAIN SAW

Item	Sub	Parts No.	Parts Description	Qty	I/C	E/C No.	Close No.	Remark
135-1F		140484-1	CLUTCH DRUM ASSEMBLY	1	S	A7152	B9889	
135-2D		140A30-6	CLUTCH DRUM ASSEMBLY	1	<	B9889	C7375	
135-2E		140A30-6	CLUTCH DRUM ASSEMBLY	1	<	B9889	C7375	
135-2F		140A30-6	CLUTCH DRUM ASSEMBLY	1	<	B9889	C7375	
135-2G		140A30-6	CLUTCH DRUM ASSEMBLY	1			C7375	
135-3		140M30-8	CLUTCH DRUM COMPLETE	1	<	C7375		
136D		267451-2	FLAT WASHER 8	1			A7152	
136E		267451-2	FLAT WASHER 8	1			A7152	
136F		267451-2	FLAT WASHER 8	1			A7152	
136-1D		267833-8	CUP WASHER 8	1	S	A7152		
136-1E		267833-8	CUP WASHER 8	1	S	A7152		
136-1F		267833-8	CUP WASHER 8	1	S	A7152		
136-1G		267833-8	CUP WASHER 8	1				
137		259033-4	RETAINING RING E TYPE 6	1				
138D		346298-8	BRAKE BAND	1			B9729	
138E		346298-8	BRAKE BAND	1			B9729	
138F		346298-8	BRAKE BAND	1			B9729	
138-1D		347363-6	BRAKE BAND	1	S	B9729		
138-1E		347363-6	BRAKE BAND	1	S	B9729		
138-1F		347363-6	BRAKE BAND	1	S	B9729		
138-1G		347363-6	BRAKE BAND	1				
139D		140476-0	ENGINE HOUSING COMPLETE	1			B9729	
139E		140476-0	ENGINE HOUSING COMPLETE	1			B9729	
139F		140476-0	ENGINE HOUSING COMPLETE	1			B9729	
139-1D		140A06-3	ENGINE HOUSING COMPLETE	1	S	B9729		
139-1E		140A06-3	ENGINE HOUSING COMPLETE	1	S	B9729		
139-1F		140A06-3	ENGINE HOUSING COMPLETE	1	S	B9729		
139-1G		140A06-3	ENGINE HOUSING COMPLETE	1				
140D		195763-2	CHAIN TENSIONER SET	1			B9729	
	D10		INC. 141-146				B9729	
140E		195763-2	CHAIN TENSIONER SET	1			B9729	
	D10		INC. 141-146				B9729	
140F		195763-2	CHAIN TENSIONER SET	1			B9729	
	D10		INC. 141-146				B9729	
140-1D		199032-3	CHAIN TENSIONER SET	1	S	B9729		
	D10		INC. 141-146			B9729		
140-1E		199032-3	CHAIN TENSIONER SET	1	S	B9729		
	D10		INC. 141-146			B9729		
140-1F		199032-3	CHAIN TENSIONER SET	1	S	B9729		
	D10		INC. 141-146			B9729		
140-1G		199032-3	CHAIN TENSIONER SET	1				
	D10		INC. 141-146					
141		213594-8	O RING 7	1				
142		227744-9	HELICAL GEAR 18	1				
143		227743-1	HELICAL GEAR 11	1				
144		452667-4	GEAR COVER PROFESSIONAL	1				
145		346300-7	TENSION SLIDE	1				
146D		452668-2	CLAMP SCREW BEDDING	1			B9729	
146E		452668-2	CLAMP SCREW BEDDING	1			B9729	
146F		452668-2	CLAMP SCREW BEDDING	1			B9729	
147		266421-8	TAPPING SCREW 3X10	1				
148		346518-0	GUIDE PLATE	1				
149		452034-3	SPROCKET GUARD	1				
150		264055-1	COLLARED HEX. NUT M8	2				
151D		453784-3	SPRING CASSETTE	1			Y06570	
151E		453784-3	SPRING CASSETTE	1			Y06570	
151F		453784-3	SPRING CASSETTE	1			Y06570	
152		195955-3	REWIND SPRING SET	1				
	D10		INC. 100,151				Y06570	
	D10		INC. 100,151				Y06570	
	D10		INC. 100,151				Y06570	
170D		WJ00096166	SCREW	1			A1874	
170E		WJ00096166	SCREW	1			A1874	
170F		WJ00096166	SCREW	1			A1874	
170-1D		ZJ17004010	SCREW (PUMP COVER)	1	X	A1874	Y06848	

D:PS-32C(N)  
E:PS-32C(N)  
F:PS-32 C(N)  
G:PS32CA35X(N)

Interchange  
O : Yes  
X : No  
< : the new part can be substituted for the current.  
> : the current part can be substituted for the new.  
S : Interchangeable as a set.

<b>DE</b>	<b>GERMANY</b>
-----------	----------------

### PS32C / PETROL CHAIN SAW

Item	Sub	Parts No.	Parts Description	Qty	I/C	E/C No.	Close No.	Remark
170-1E		ZJ17004010	SCREW (PUMP COVER)	1	X	A1874	Y06848	
170-1F		ZJ17004010	SCREW (PUMP COVER)	1	X	A1874	Y06848	
170-2D		ZJ00000020	SCREW (PUMP COVER)	1	O	Y06848		
170-2E		ZJ00000020	SCREW (PUMP COVER)	1	O	Y06848		
170-2F		ZJ00000020	SCREW (PUMP COVER)	1	O	Y06848		
170-2G		ZJ00000020	SCREW (PUMP COVER)	1				
171D		WJ00213750	COVER ASSEMBLY-PUMP	1			A1874	
171E		WJ00213750	COVER ASSEMBLY-PUMP	1			A1874	
171F		WJ00213750	COVER ASSEMBLY-PUMP	1			A1874	
171-1D		ZJ0K017704	COVER KIT, PUMP	1	X	A1874	Y06848	
171-1E		ZJ0K017704	COVER KIT, PUMP	1	X	A1874	Y06848	
171-1F		ZJ0K017704	COVER KIT, PUMP	1	X	A1874	Y06848	
171-2D		ZJ00000004	COVER KIT,PUMP	1	O	Y06848		
171-2E		ZJ00000004	COVER KIT,PUMP	1	O	Y06848		
171-2F		ZJ00000004	COVER KIT,PUMP	1	O	Y06848		
171-2G		ZJ00000004	COVER KIT,PUMP	1				
172D		WJ00096369	SCREW-IDLE ADJ.	1			A1874	
172E		WJ00096369	SCREW-IDLE ADJ.	1			A1874	
172F		WJ00096369	SCREW-IDLE ADJ.	1			A1874	
173D		WJ00098356	SPRING	1			A1874	
173E		WJ00098356	SPRING	1			A1874	
173F		WJ00098356	SPRING	1			A1874	
174D		WJ00096475	SCREW	1			A1874	
174E		WJ00096475	SCREW	1			A1874	
174F		WJ00096475	SCREW	1			A1874	
174-1D		ZJ17103004	SCREW	1	X	A1874	Y06848	
174-1E		ZJ17103004	SCREW	1	X	A1874	Y06848	
174-1F		ZJ17103004	SCREW	1	X	A1874	Y06848	
174-2D		ZJ00000023	SCREW	1	O	Y06848		
174-2E		ZJ00000023	SCREW	1	O	Y06848		
174-2F		ZJ00000023	SCREW	1	O	Y06848		
174-2G		ZJ00000023	SCREW	1				
175D		WJ00183519	LEVER-CHOKE	1			A1874	
175E		WJ00183519	LEVER-CHOKE	1			A1874	
175F		WJ00183519	LEVER-CHOKE	1			A1874	
175-1D		ZJ00042706	LEVER, CHOKE	1	X	A1874	Y06848	
175-1E		ZJ00042706	LEVER, CHOKE	1	X	A1874	Y06848	
175-1F		ZJ00042706	LEVER, CHOKE	1	X	A1874	Y06848	
175-2D		ZJ00000025	LEVER,CHOKE	1	O	Y06848		
175-2E		ZJ00000025	LEVER,CHOKE	1	O	Y06848		
175-2F		ZJ00000025	LEVER,CHOKE	1	O	Y06848		
175-2G		ZJ00000025	LEVER,CHOKE	1				
176D		WJ00983585	SPRING	1			A1874	
176E		WJ00983585	SPRING	1			A1874	
176F		WJ00983585	SPRING	1			A1874	
176-1D		ZJ00013113	SPRING,RETURN	1	X	A1874	Y06848	
176-1E		ZJ00013113	SPRING,RETURN	1	X	A1874	Y06848	
176-1F		ZJ00013113	SPRING,RETURN	1	X	A1874	Y06848	
176-2D		ZJ00000040	SPRING,THROTTLE RETURN	1	O	Y06848		
176-2E		ZJ00000040	SPRING,THROTTLE RETURN	1	O	Y06848		
176-2F		ZJ00000040	SPRING,THROTTLE RETURN	1	O	Y06848		
176-2G		ZJ00000040	SPRING,THROTTLE RETURN	1				
177D		WJ00223556	SHAFT ASSEMBLY-THROTTLE	1			A1874	
177E		WJ00223556	SHAFT ASSEMBLY-THROTTLE	1			A1874	
177F		WJ00223556	SHAFT ASSEMBLY-THROTTLE	1			A1874	
177-1D		ZJ0A011716	SHAFT ASS'Y, THROTTLE	1	X	A1874	Y06848	
177-1E		ZJ0A011716	SHAFT ASS'Y, THROTTLE	1	X	A1874	Y06848	
177-1F		ZJ0A011716	SHAFT ASS'Y, THROTTLE	1	X	A1874	Y06848	
177-2D		ZJ00000015	THROTTLE SHAFT ASSY	1	O	Y06848		
177-2E		ZJ00000015	THROTTLE SHAFT ASSY	1	O	Y06848		
177-2F		ZJ00000015	THROTTLE SHAFT ASSY	1	O	Y06848		
177-2G		ZJ00000015	THROTTLE SHAFT ASSY	1				
178D		WJ00098494	SPRING	1			A1874	
178E		WJ00098494	SPRING	1			A1874	
178F		WJ00098494	SPRING	1			A1874	

D:PS-32C(N)  
E:PS-32C(N)  
F:PS-32 C(N)  
G:PS32CA35X(N)

Interchange  
O : Yes  
X : No  
< : the new part can be substituted for the current.  
> : the current part can be substituted for the new.  
S : Interchangeable as a set.

<b>DE</b>	<b>GERMANY</b>
-----------	----------------

### PS32C / PETROL CHAIN SAW

Item	Sub	Parts No.	Parts Description	Qty	I/C	E/C No.	Close No.	Remark
178-1D		ZJ00013039	SPRING, THROTTLE RETURN	1	X	A1874	Y06848	
178-1E		ZJ00013039	SPRING, THROTTLE RETURN	1	X	A1874	Y06848	
178-1F		ZJ00013039	SPRING, THROTTLE RETURN	1	X	A1874	Y06848	
178-2D		ZJ00000034	SPRING, THROTTLE RETURN	1	O	Y06848		
178-2E		ZJ00000034	SPRING, THROTTLE RETURN	1	O	Y06848		
178-2F		ZJ00000034	SPRING, THROTTLE RETURN	1	O	Y06848		
178-2G		ZJ00000034	SPRING, THROTTLE RETURN	1				
179D		WJ01023908	NEEDLE-IDLE	1			A1874	
179E		WJ01023908	NEEDLE-IDLE	1			A1874	
179F		WJ01023908	NEEDLE-IDLE	1			A1874	
179-1D		ZJ00031706	SCREW, IDLE MIXTURE	1	X	A1874	Y06848	
179-1E		ZJ00031706	SCREW, IDLE MIXTURE	1	X	A1874	Y06848	
179-1F		ZJ00031706	SCREW, IDLE MIXTURE	1	X	A1874	Y06848	
179-2D		ZJ00000026	SCREW, IDLE MIXTURE	1	O	Y06848		
179-2E		ZJ00000026	SCREW, IDLE MIXTURE	1	O	Y06848		
179-2F		ZJ00000026	SCREW, IDLE MIXTURE	1	O	Y06848		
179-2G		ZJ00000026	SCREW, IDLE MIXTURE	1				
180D		WJ01024001	NEEDLE-HIGH SPEED	1			A1874	
180E		WJ01024001	NEEDLE-HIGH SPEED	1			A1874	
180F		WJ01024001	NEEDLE-HIGH SPEED	1			A1874	
180-1D		ZJ00030706	SCREW, MAIN MIXTURE	1	X	A1874	Y06848	
180-1E		ZJ00030706	SCREW, MAIN MIXTURE	1	X	A1874	Y06848	
180-1F		ZJ00030706	SCREW, MAIN MIXTURE	1	X	A1874	Y06848	
180-2D		ZJ00000027	SCREW, MAIN MIXTURE	1	O	Y06848		
180-2E		ZJ00000027	SCREW, MAIN MIXTURE	1	O	Y06848		
180-2F		ZJ00000027	SCREW, MAIN MIXTURE	1	O	Y06848		
180-2G		ZJ00000027	SCREW, MAIN MIXTURE	1				
181D		WJ00098404	SPRING	2			A1874	
181E		WJ00098404	SPRING	2			A1874	
181F		WJ00098404	SPRING	2			A1874	
182D		WJ00136152	WASHER	2			A1874	
182E		WJ00136152	WASHER	2			A1874	
182F		WJ00136152	WASHER	2			A1874	
183D		WJ00016105	O RING	2			A1874	
183E		WJ00016105	O RING	2			A1874	
183F		WJ00016105	O RING	2			A1874	
184D		WJ00062150	VALVE-CHOKE	1			A1874	
184E		WJ00062150	VALVE-CHOKE	1			A1874	
184F		WJ00062150	VALVE-CHOKE	1			A1874	
184-1D		ZJ00043701	VALVE, CHOKE	1	X	A1874	Y06848	
184-1E		ZJ00043701	VALVE, CHOKE	1	X	A1874	Y06848	
184-1F		ZJ00043701	VALVE, CHOKE	1	X	A1874	Y06848	
184-2D		ZJ00000024	VALVE, CHOKE	1	O	Y06848		
184-2E		ZJ00000024	VALVE, CHOKE	1	O	Y06848		
184-2F		ZJ00000024	VALVE, CHOKE	1	O	Y06848		
184-2G		ZJ00000024	VALVE, CHOKE	1				
185D		WJ00983270	SPRING	1			A1874	
185E		WJ00983270	SPRING	1			A1874	
185F		WJ00983270	SPRING	1			A1874	
185-1D		ZJ00019009	SPRING, METERING LEVER	1	X	A1874	Y06848	
185-1E		ZJ00019009	SPRING, METERING LEVER	1	X	A1874	Y06848	
185-1F		ZJ00019009	SPRING, METERING LEVER	1	X	A1874	Y06848	
185-2D		ZJ00000010	SPRING, METERING LEVER	1	O	Y06848		
185-2E		ZJ00000010	SPRING, METERING LEVER	1	O	Y06848		
185-2F		ZJ00000010	SPRING, METERING LEVER	1	O	Y06848		
185-2G		ZJ00000010	SPRING, METERING LEVER	1				
186D		WJ00166114	LEVER-METERING	1			A1874	
186E		WJ00166114	LEVER-METERING	1			A1874	
186F		WJ00166114	LEVER-METERING	1			A1874	
186-1D		ZJ00020012	LEVER, METERING	1	X	A1874	Y06848	
186-1E		ZJ00020012	LEVER, METERING	1	X	A1874	Y06848	
186-1F		ZJ00020012	LEVER, METERING	1	X	A1874	Y06848	
186-2D		ZJ00000006	LEVER	1	O	Y06848		
186-2E		ZJ00000006	LEVER	1	O	Y06848		
186-2F		ZJ00000006	LEVER	1	O	Y06848		

D:PS-32C(N)  
E:PS-32C(N)  
F:PS-32 C(N)  
G:PS32CA35X(N)

Interchange  
O : Yes  
X : No  
< : the new part can be substituted for the current.  
> : the current part can be substituted for the new.  
S : Interchangeable as a set.

<b>DE</b>	<b>GERMANY</b>
-----------	----------------

### PS32C / PETROL CHAIN SAW

Item	Sub	Parts No.	Parts Description	Qty	I/C	E/C No.	Close No.	Remark
186-2G		ZJ00000006	LEVER	1				
187D		WJ00014477	METERING LEVER PIN	1			A1874	
187E		WJ00014477	METERING LEVER PIN	1			A1874	
187F		WJ00014477	METERING LEVER PIN	1			A1874	
187-1D		ZJ00021001	PIN	1	X	A1874	Y06848	
187-1E		ZJ00021001	PIN	1	X	A1874	Y06848	
187-1F		ZJ00021001	PIN	1	X	A1874	Y06848	
187-2D		ZJ00000008	PIN	1	O	Y06848		
187-2E		ZJ00000008	PIN	1	O	Y06848		
187-2F		ZJ00000008	PIN	1	O	Y06848		
187-2G		ZJ00000008	PIN	1				
188D		WJ00008282	INLET NEEDLE VALVE	1			A1874	
188E		WJ00008282	INLET NEEDLE VALVE	1			A1874	
188F		WJ00008282	INLET NEEDLE VALVE	1			A1874	
188-1D		ZJ00018004	VALVE, INLET NEEDLE	1	X	A1874	Y06848	
188-1E		ZJ00018004	VALVE, INLET NEEDLE	1	X	A1874	Y06848	
188-1F		ZJ00018004	VALVE, INLET NEEDLE	1	X	A1874	Y06848	
188-2D		ZJ00000007	VALVE, INLET NEEDLE	1	O	Y06848		
188-2E		ZJ00000007	VALVE, INLET NEEDLE	1	O	Y06848		
188-2F		ZJ00000007	VALVE, INLET NEEDLE	1	O	Y06848		
188-2G		ZJ00000007	VALVE, INLET NEEDLE	1				
189D		WJ00963226	SCREW	1			A1874	
189E		WJ00963226	SCREW	1			A1874	
189F		WJ00963226	SCREW	1			A1874	
189-1D		ZJ14803006	SCREW	1	X	A1874	Y06848	
189-1E		ZJ14803006	SCREW	1	X	A1874	Y06848	
189-1F		ZJ14803006	SCREW	1	X	A1874	Y06848	
189-2D		ZJ00000009	SCREW (METERING LEVER PIN)	1	O	Y06848		
189-2E		ZJ00000009	SCREW (METERING LEVER PIN)	1	O	Y06848		
189-2F		ZJ00000009	SCREW (METERING LEVER PIN)	1	O	Y06848		
189-2G		ZJ00000009	SCREW (METERING LEVER PIN)	1				
190D		WJ00088271	PLUG-WELCH	1			A1874	
190E		WJ00088271	PLUG-WELCH	1			A1874	
190F		WJ00088271	PLUG-WELCH	1			A1874	
191D		WJ00021158	METERING DIAPHRAGM COVER	1			A1874	
191E		WJ00021158	METERING DIAPHRAGM COVER	1			A1874	
191F		WJ00021158	METERING DIAPHRAGM COVER	1			A1874	
191-1D		ZJ00028704	COVER, METERING	1	X	A1874	Y06848	
191-1E		ZJ00028704	COVER, METERING	1	X	A1874	Y06848	
191-1F		ZJ00028704	COVER, METERING	1	X	A1874	Y06848	
191-2D		ZJ00000028	COVER, METERING	1	O	Y06848		
191-2E		ZJ00000028	COVER, METERING	1	O	Y06848		
191-2F		ZJ00000028	COVER, METERING	1	O	Y06848		
191-2G		ZJ00000028	COVER, METERING	1				
192D		WJ00095613	DIAPHRAGM ASSEMBLY-METERING	1			A1874	
192E		WJ00095613	DIAPHRAGM ASSEMBLY-METERING	1			A1874	
192F		WJ00095613	DIAPHRAGM ASSEMBLY-METERING	1			A1874	
192-1D		ZJ0A015049	DIAPHRAGM ASS'Y, METERING	1	X	A1874	Y06848	
192-1E		ZJ0A015049	DIAPHRAGM ASS'Y, METERING	1	X	A1874	Y06848	
192-1F		ZJ0A015049	DIAPHRAGM ASS'Y, METERING	1	X	A1874	Y06848	
192-2D		ZJ00000013	DIAPHRAGM ASS'Y, METERING	1	O	Y06848		
192-2E		ZJ00000013	DIAPHRAGM ASS'Y, METERING	1	O	Y06848		
192-2F		ZJ00000013	DIAPHRAGM ASS'Y, METERING	1	O	Y06848		
192-2G		ZJ00000013	DIAPHRAGM ASS'Y, METERING	1				
193D		WJ00092192	GASKET-METERING DIAPHRAGM	1			Y06436	
193E		WJ00092192	GASKET-METERING DIAPHRAGM	1			Y06436	
193F		WJ00092192	GASKET-METERING DIAPHRAGM	1			Y06436	
193-1D		442183-4	METERING DIAPHRAGM GASKET	1	O	Y06436	A1874	
193-1E		442183-4	METERING DIAPHRAGM GASKET	1	O	Y06436	A1874	
193-1F		442183-4	METERING DIAPHRAGM GASKET	1	O	Y06436	A1874	
193-2D		ZJ00016019	GASKET, METERING CHAMBER	1	X	A1874	Y06848	
193-2E		ZJ00016019	GASKET, METERING CHAMBER	1	X	A1874	Y06848	
193-2F		ZJ00016019	GASKET, METERING CHAMBER	1	X	A1874	Y06848	
193-3D		ZJ00000011	GASKET, METERING CHAMBER	1	O	Y06848		
193-3E		ZJ00000011	GASKET, METERING CHAMBER	1	O	Y06848		

D:PS-32C(N)  
E:PS-32C(N)  
F:PS-32 C(N)  
G:PS32CA35X(N)

Interchange  
O : Yes  
X : No  
< : the new part can be substituted for the current.  
> : the current part can be substituted for the new.  
S : Interchangeable as a set.



<b>DE</b>	<b>GERMANY</b>
-----------	----------------

### PS32C / PETROL CHAIN SAW

Item	Sub	Parts No.	Parts Description	Qty	I/C	E/C No.	Close No.	Remark
193-3F		ZJ00000011	GASKET,METERING CHAMBER	1	O	Y06848		
193-3G		ZJ00000011	GASKET,METERING CHAMBER	1				
194D		WJ00223784	SHAFT ASSEMBLY-CHOKE	1			A1874	
194E		WJ00223784	SHAFT ASSEMBLY-CHOKE	1			A1874	
194F		WJ00223784	SHAFT ASSEMBLY-CHOKE	1			A1874	
194-1D		ZJ0A041704	SHAFT ASS'Y,CHOKE	1	X	A1874	Y06848	
194-1E		ZJ0A041704	SHAFT ASS'Y,CHOKE	1	X	A1874	Y06848	
194-1F		ZJ0A041704	SHAFT ASS'Y,CHOKE	1	X	A1874	Y06848	
194-2D		ZJ00000012	SHAFT ASSY,CHOKE	1	O	Y06848		
194-2E		ZJ00000012	SHAFT ASSY,CHOKE	1	O	Y06848		
194-2F		ZJ00000012	SHAFT ASSY,CHOKE	1	O	Y06848		
194-2G		ZJ00000012	SHAFT ASSY,CHOKE	1				
195D		WJ00013690	WASHER	1			A1874	
195E		WJ00013690	WASHER	1			A1874	
195F		WJ00013690	WASHER	1			A1874	
195-1D		ZJ00026037	WASHER	1	X	A1874	Y06848	
195-1E		ZJ00026037	WASHER	1	X	A1874	Y06848	
195-1F		ZJ00026037	WASHER	1	X	A1874	Y06848	
195-2D		ZJ00000033	WASHER	1	O	Y06848		
195-2E		ZJ00000033	WASHER	1	O	Y06848		
195-2F		ZJ00000033	WASHER	1	O	Y06848		
195-2G		ZJ00000033	WASHER	1				
196D		WJ00016682	LEVER-FAST IDLE	1			A1874	
196E		WJ00016682	LEVER-FAST IDLE	1			A1874	
196F		WJ00016682	LEVER-FAST IDLE	1			A1874	
196-1D		ZJ00042703	LEVER,CHOKE	1	X	A1874	Y06848	
196-1E		ZJ00042703	LEVER,CHOKE	1	X	A1874	Y06848	
196-1F		ZJ00042703	LEVER,CHOKE	1	X	A1874	Y06848	
196-2D		ZJ00000031	LEVER,CHOKE	1	O	Y06848		
196-2E		ZJ00000031	LEVER,CHOKE	1	O	Y06848		
196-2F		ZJ00000031	LEVER,CHOKE	1	O	Y06848		
196-2G		ZJ00000031	LEVER,CHOKE	1				
197D		WJ00983584	SPRING	1			A1874	
197E		WJ00983584	SPRING	1			A1874	
197F		WJ00983584	SPRING	1			A1874	
197-1D		ZJ00013149	SPRING,CHOKE RETURN	1	X	A1874	Y06848	
197-1E		ZJ00013149	SPRING,CHOKE RETURN	1	X	A1874	Y06848	
197-1F		ZJ00013149	SPRING,CHOKE RETURN	1	X	A1874	Y06848	
197-2D		ZJ00000032	SPRING,CHOKE RETURN	1	O	Y06848		
197-2E		ZJ00000032	SPRING,CHOKE RETURN	1	O	Y06848		
197-2F		ZJ00000032	SPRING,CHOKE RETURN	1	O	Y06848		
197-2G		ZJ00000032	SPRING,CHOKE RETURN	1				
198D		WJ00001673	RETAINING RING	1			A1874	
198E		WJ00001673	RETAINING RING	1			A1874	
198F		WJ00001673	RETAINING RING	1			A1874	
198-1D		ZJ19510040	E-RING	1	X	A1874	Y06848	
198-1E		ZJ19510040	E-RING	1	X	A1874	Y06848	
198-1F		ZJ19510040	E-RING	1	X	A1874	Y06848	
198-2D		ZJ00000017	E-RING	1	O	Y06848		
198-2E		ZJ00000017	E-RING	1	O	Y06848		
198-2F		ZJ00000017	E-RING	1	O	Y06848		
198-2G		ZJ00000017	E-RING	1				
199D		WJ00183366	LEVER-THROTTLE	1			A1874	
199E		WJ00183366	LEVER-THROTTLE	1			A1874	
199F		WJ00183366	LEVER-THROTTLE	1			A1874	
199-1D		ZJ00012705	LEVER,THROTTLE	1	X	A1874	Y06848	
199-1E		ZJ00012705	LEVER,THROTTLE	1	X	A1874	Y06848	
199-1F		ZJ00012705	LEVER,THROTTLE	1	X	A1874	Y06848	
199-2D		ZJ00000022	LEVER,THROTTLE	1	O	Y06848		
199-2E		ZJ00000022	LEVER,THROTTLE	1	O	Y06848		
199-2F		ZJ00000022	LEVER,THROTTLE	1	O	Y06848		
199-2G		ZJ00000022	LEVER,THROTTLE	1				
200D		WJ00983164	SPRING	1			A1874	
200E		WJ00983164	SPRING	1			A1874	
200F		WJ00983164	SPRING	1			A1874	

D:PS-32C(N)  
E:PS-32C(N)  
F:PS-32 C(N)  
G:PS32CA35X(N)

Interchange  
O : Yes  
X : No  
< : the new part can be substituted for the current.  
> : the current part can be substituted for the new.  
S : Interchangeable as a set.

### PS32C / PETROL CHAIN SAW

Item	Sub	Parts No.	Parts Description	Qty	I/C	E/C No.	Close No.	Remark
200-1D		ZJ00054057	SPRING	1	X	A1874	Y06848	
200-1E		ZJ00054057	SPRING	1	X	A1874	Y06848	
200-1F		ZJ00054057	SPRING	1	X	A1874	Y06848	
200-2D		ZJ00000019	SPRING	1	O	Y06848	Y07072	
200-2E		ZJ00000019	SPRING	1	O	Y06848	Y07072	
200-2F		ZJ00000019	SPRING	1	O	Y06848	Y07072	
200-3D		ZJ00000073	SPRING	1	O	Y07072		
200-3E		ZJ00000073	SPRING	1	O	Y07072		
200-3F		ZJ00000073	SPRING	1	O	Y07072		
200-3G		ZJ00000073	SPRING	1				
201D		WJ00160511	PISTON ASSMBLY-ACCELERATOR	1			A1874	
201E		WJ00160511	PISTON ASSMBLY-ACCELERATOR	1			A1874	
201F		WJ00160511	PISTON ASSMBLY-ACCELERATOR	1			A1874	
201-1D		ZJ0K053049	PLUNGER KIT	1	X	A1874	Y06848	
201-1E		ZJ0K053049	PLUNGER KIT	1	X	A1874	Y06848	
201-1F		ZJ0K053049	PLUNGER KIT	1	X	A1874	Y06848	
201-2D		ZJ00000005	PLUNGER KIT	1	O	Y06848		
201-2E		ZJ00000005	PLUNGER KIT	1	O	Y06848		
201-2F		ZJ00000005	PLUNGER KIT	1	O	Y06848		
201-2G		ZJ00000005	PLUNGER KIT	1				
202D		WJ00088229	CUP PLUG	1			A1874	
202E		WJ00088229	CUP PLUG	1			A1874	
202F		WJ00088229	CUP PLUG	1			A1874	
202-1D		ZJ00005048	PLUG,ACC POCKET	1	X	A1874	Y06848	
202-1E		ZJ00005048	PLUG,ACC POCKET	1	X	A1874	Y06848	
202-1F		ZJ00005048	PLUG,ACC POCKET	1	X	A1874	Y06848	
202-2D		ZJ00000036	PLUG,ACC POCKET	1	O	Y06848		
202-2E		ZJ00000036	PLUG,ACC POCKET	1	O	Y06848		
202-2F		ZJ00000036	PLUG,ACC POCKET	1	O	Y06848		
202-2G		ZJ00000036	PLUG,ACC POCKET	1				
203D		WJ00014070	INLET SCREEN	1			A1874	
203E		WJ00014070	INLET SCREEN	1			A1874	
203F		WJ00014070	INLET SCREEN	1			A1874	
203-1D		ZJ00004011	STRAINER	1	X	A1874	Y06848	
203-1E		ZJ00004011	STRAINER	1	X	A1874	Y06848	
203-1F		ZJ00004011	STRAINER	1	X	A1874	Y06848	
203-2D		ZJ00000003	STRAINER	1	O	Y06848		
203-2E		ZJ00000003	STRAINER	1	O	Y06848		
203-2F		ZJ00000003	STRAINER	1	O	Y06848		
203-2G		ZJ00000003	STRAINER	1				
204D		WJ00343439	VALVE-THROTTLE	1			A1874	
204E		WJ00343439	VALVE-THROTTLE	1			A1874	
204F		WJ00343439	VALVE-THROTTLE	1			A1874	
204-1D		ZJ00014040	VALVE,THROTTLE	1	X	A1874	Y06848	
204-1E		ZJ00014040	VALVE,THROTTLE	1	X	A1874	Y06848	
204-1F		ZJ00014040	VALVE,THROTTLE	1	X	A1874	Y06848	
204-2D		ZJ00000030	VALVE,THROTTLE	1	O	Y06848		
204-2E		ZJ00000030	VALVE,THROTTLE	1	O	Y06848		
204-2F		ZJ00000030	VALVE,THROTTLE	1	O	Y06848		
204-2G		ZJ00000030	VALVE,THROTTLE	1				
205D		WJ00009589	PUMP DIAPHRAGM	1			A1874	
205E		WJ00009589	PUMP DIAPHRAGM	1			A1874	
205F		WJ00009589	PUMP DIAPHRAGM	1			A1874	
205-1D		ZJ00015050	DIAPHRAGM,PUMP	1	X	A1874	Y06848	
205-1E		ZJ00015050	DIAPHRAGM,PUMP	1	X	A1874	Y06848	
205-1F		ZJ00015050	DIAPHRAGM,PUMP	1	X	A1874	Y06848	
205-2D		ZJ00000029	DIAPHRAGM, PUMP	1	O	Y06848		
205-2E		ZJ00000029	DIAPHRAGM, PUMP	1	O	Y06848		
205-2F		ZJ00000029	DIAPHRAGM, PUMP	1	O	Y06848		
205-2G		ZJ00000029	DIAPHRAGM, PUMP	1				
206D		WJ00092225	GASKET-PUMP	1			A1874	
206E		WJ00092225	GASKET-PUMP	1			A1874	
206F		WJ00092225	GASKET-PUMP	1			A1874	
206-1D		ZJ00016033	GASKET,PUMP	1	X	A1874	Y06848	
206-1E		ZJ00016033	GASKET,PUMP	1	X	A1874	Y06848	

D:PS-32C(N)  
E:PS-32C(N)  
F:PS-32 C(N)  
G:PS32CA35X(N)

Interchange  
O : Yes  
X : No  
< : the new part can be substituted for the current.  
> : the current part can be substituted for the new.  
S : Interchangeable as a set.

<b>DE</b>	<b>GERMANY</b>
-----------	----------------

### PS32C / PETROL CHAIN SAW

Item	Sub	Parts No.	Parts Description	Qty	I/C	E/C No.	Close No.	Remark
206-1F		ZJ00016033	GASKET,PUMP	1	X	A1874	Y06848	
206-2D		ZJ00000016	GASKET, PUMP	1	O	Y06848		
206-2E		ZJ00000016	GASKET, PUMP	1	O	Y06848		
206-2F		ZJ00000016	GASKET, PUMP	1	O	Y06848		
206-2G		ZJ00000016	GASKET, PUMP	1				
207D		WJ00096589	SCREW ASSEMBLY	4			A1874	
207E		WJ00096589	SCREW ASSEMBLY	4			A1874	
207F		WJ00096589	SCREW ASSEMBLY	4			A1874	
207-1D		ZJ17203006	SCREW (WITH SERRATION)	2	X	A1874	Y06848	
207-1E		ZJ17203006	SCREW (WITH SERRATION)	2	X	A1874	Y06848	
207-1F		ZJ17203006	SCREW (WITH SERRATION)	2	X	A1874	Y06848	
207-2D		ZJ00000014	SCREW (WITH SERRATION)	2	O	Y06848		
207-2E		ZJ00000014	SCREW (WITH SERRATION)	2	O	Y06848		
207-2F		ZJ00000014	SCREW (WITH SERRATION)	2	O	Y06848		
207-2G		ZJ00000014	SCREW (WITH SERRATION)	2				
208D		WJ00096475	SCREW	1			A1874	
208E		WJ00096475	SCREW	1			A1874	
208F		WJ00096475	SCREW	1			A1874	
208-1D		ZJ00000001	SCREW	1	X	A1874		
208-1E		ZJ00000001	SCREW	1	X	A1874		
208-1F		ZJ00000001	SCREW	1	X	A1874		
208-1G		ZJ00000001	SCREW	1				
209D		WJ00096475	SCREW	1			A1874	
209E		WJ00096475	SCREW	1			A1874	
209F		WJ00096475	SCREW	1			A1874	
209-1D		ZJ17103004	SCREW	1	X	A1874	Y06848	
209-1E		ZJ17103004	SCREW	1	X	A1874	Y06848	
209-1F		ZJ17103004	SCREW	1	X	A1874	Y06848	
209-2D		ZJ00000023	SCREW	1	O	Y06848		
209-2E		ZJ00000023	SCREW	1	O	Y06848		
209-2F		ZJ00000023	SCREW	1	O	Y06848		
209-2G		ZJ00000023	SCREW	1				
210D		WJ00096475	SCREW	1			A1874	
210E		WJ00096475	SCREW	1			A1874	
210F		WJ00096475	SCREW	1			A1874	
210-1D		ZJ00000001	SCREW	1	X	A1874		
210-1E		ZJ00000001	SCREW	1	X	A1874		
210-1F		ZJ00000001	SCREW	1	X	A1874		
210-1G		ZJ00000001	SCREW	1				
211D		WJ00001673	RETAINING RING	1			A1874	
211E		WJ00001673	RETAINING RING	1			A1874	
211F		WJ00001673	RETAINING RING	1			A1874	
212D		424519-9	HOOD CAP	1		97296		
212E		424519-9	HOOD CAP	1		97296		
212F		424519-9	HOOD CAP	1		97296		
212G		424519-9	HOOD CAP	1				
213D		ZJ0A001727	BODY,ASS'Y	1		A1874	Y06848	
213E		ZJ0A001727	BODY,ASS'Y	1		A1874	Y06848	
213F		ZJ0A001727	BODY,ASS'Y	1		A1874	Y06848	
213-1D		ZJ00000002	BODY,ASS'Y	1	O	Y06848	Y06908	
213-1E		ZJ00000002	BODY,ASS'Y	1	O	Y06848	Y06908	
213-1F		ZJ00000002	BODY,ASS'Y	1	O	Y06848	Y06908	
214D		ZJ0A007710	NOZZLE ASS'Y,CHECK VALVE	1		A1874	Y06848	
214E		ZJ0A007710	NOZZLE ASS'Y,CHECK VALVE	1		A1874	Y06848	
214F		ZJ0A007710	NOZZLE ASS'Y,CHECK VALVE	1		A1874	Y06848	
214-1D		ZJ00000018	NOZZLE ASS'Y,CHECK VALVE	1	O	Y06848		
214-1E		ZJ00000018	NOZZLE ASS'Y,CHECK VALVE	1	O	Y06848		
214-1F		ZJ00000018	NOZZLE ASS'Y,CHECK VALVE	1	O	Y06848		
214-1G		ZJ00000018	NOZZLE ASS'Y,CHECK VALVE	1				
215D		ZJ00052019	COLLAR	1		A1874	Y06848	
215E		ZJ00052019	COLLAR	1		A1874	Y06848	
215F		ZJ00052019	COLLAR	1		A1874	Y06848	
215-1D		ZJ00000021	COLLAR	1	O	Y06848		
215-1E		ZJ00000021	COLLAR	1	O	Y06848		
215-1F		ZJ00000021	COLLAR	1	O	Y06848		

D:PS-32C(N)  
E:PS-32C(N)  
F:PS-32 C(N)  
G:PS32CA35X(N)

Interchange  
O : Yes  
X : No  
< : the new part can be substituted for the current.  
> : the current part can be substituted for the new.  
S : Interchangeable as a set.

