



DE	GERMANY
----	---------

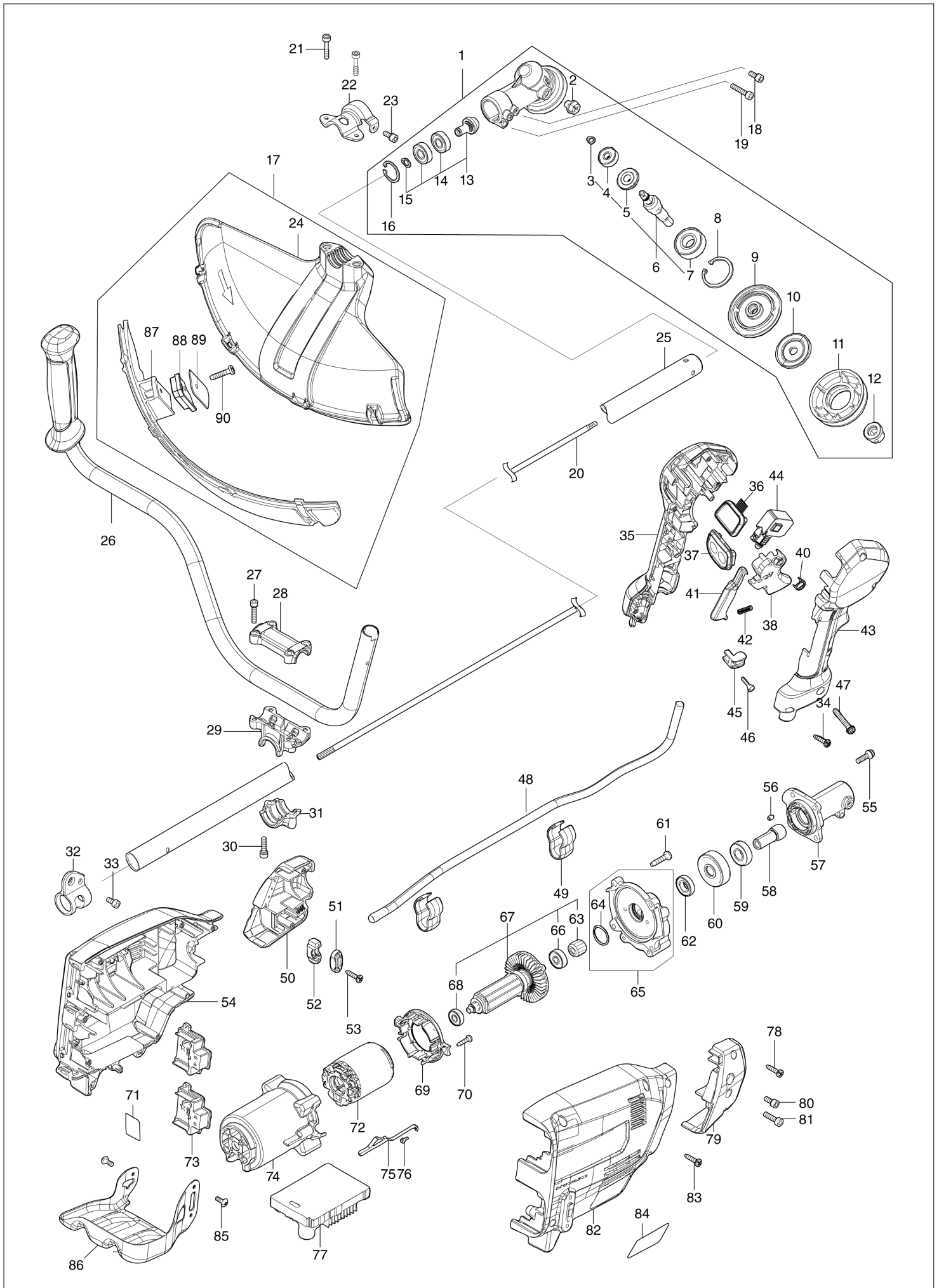
Diagram / Parts List

AT3726A

CORDLESS GRASS TRIMMER



(DE) AT3726A / CORDLESS GRASS TRIMMER



DE	GERMANY
-----------	----------------

AT3726A / CORDLESS GRASS TRIMMER

Item	Sub	Parts No.	Parts Description	Qty	I/C	E/C No.	Close No.	Remark
001		123853-1	GEAR CASE ASSEMBLY	1				
	D10		INC. 2-16					
002		265590-2	+HEX.BOLT M8X10 WITH R	1				
003		232350-7	RING SPRING 6	1				
004		210030-5	BALL BEARING 627ZZ	1				
005		221484-1	SPIRAL BEVEL GEAR 19	1				
006		136233-2	CUTTER SHAFT ASS'Y	1				
	D10		INC. 3-5,7					
007		211228-7	BALL BEARING 6202DDW	1				
008		257432-4	RETAINING RING R-35	1				
009		144312-2	RECEIVE WASHER COMPLETE	1				
010		347104-0	CLAMP WASHER	1				
011		457274-8	CUP US	1				
012		252236-9	HEX. LOCK NUT M10-17	1				
013		136235-8	SPIRAL BEVEL GEAR ASS'Y	1				
	D10		INC. 14,15					
014		210049-4	BALL BEARING 609ZZ	2				
015		257986-1	RETAINING RING (EXT) S-9	1				
016		257987-9	RETAINING RING (INT)R-24	1				
017		191B54-1	PROTECTOR U 430 SET MG	1				
	D10		INC. 24,87-90					
018		922216-6	H.S.H.BOLT M5X14 WITH W	1				
019		922242-5	HEX. SOCKET HEAD BOLT M5X25	1				
020		327056-1	SHAFT	1				
021		251513-6	H.S.H.BOLT M5X25	2				
022		347107-4	PROTECTOR CLAMP 24	1				
023		922216-6	H.S.H.BOLT M5X14 WITH W	1				
024		457271-4	PROTECTOR U 450	1				
025		140P10-2	SHAFT PIPE COMPLETE H	1				
	C10	893388-3	DOLMAR LOGO LABEL	1				
	C20	819N87-3	CAUTION LABEL	1				
026		140L83-1	HANDLE 19 COMPLETE	1				
027		922241-7	HEX. SOCKET HEAD BOLT M5X25	4				
028		318272-6	HANDLE HOLDER 1	1				
029		319705-4	HANDLE HOLDER	1				
030		922241-7	HEX. SOCKET HEAD BOLT M5X25	2				
031		319703-8	PIPE CLAMP	1				
032		347116-3	HANGER	1				
033		922212-4	HEX. SOCKET HEAD BOLT M5X12	1				
034		266326-2	TAPPING SCREW 4X18	5				
035		183L61-8	GRIP SET	1				
	C10	252180-0	HEX. LOCK NUT M5-8	1				
	D10		INC. 43					
036		140K37-2	INDICATION CIRCUIT COMPLETE E	1				
037		140K35-6	SWITCH CIRCUIT COMPLETE G	1				
	C10	819J26-9	SWITCH LABEL	1				
038		459145-5	SWITCH LEVER	1				
040		233540-5	TORSION SPRING 11	1				
041		459146-3	LOCK OFF LEVER	1				
042		233101-1	COMPRESSION SPRING 4	1				
043		183L61-8	GRIP SET	1				
	C10	252180-0	HEX. LOCK NUT M5-8	1				
	D10		INC. 35					
044		651436-2	SWITCH C3JW-1A-P-2	1				
045		687260-7	STRAIN RELIEF	1				
046		266326-2	TAPPING SCREW 4X18	1				
047		911258-5	PAN HEAD SCREW M5X35	1				
048		699132-4	POWER SUPPLY CORD UNIT	1				
049		457458-8	CLAMP	2				
050		183N25-4	HOUSING COVER SET	1				
	D10		INC. 79					
051		687124-5	STRAIN RELIEF	1			Z47749	
051-1		687052-4	STRAIN RELIEF	1	O	Z47749		
052		687051-6	STRAIN RELIEF	1				
053		266326-2	TAPPING SCREW 4X18	2				

B:AT3726AZ(N)

Interchange
 O : Yes
 X : No
 < : the new part can be substituted for the current.
 > : the current part can be substituted for the new.
 S : Interchangeable as a set.

