



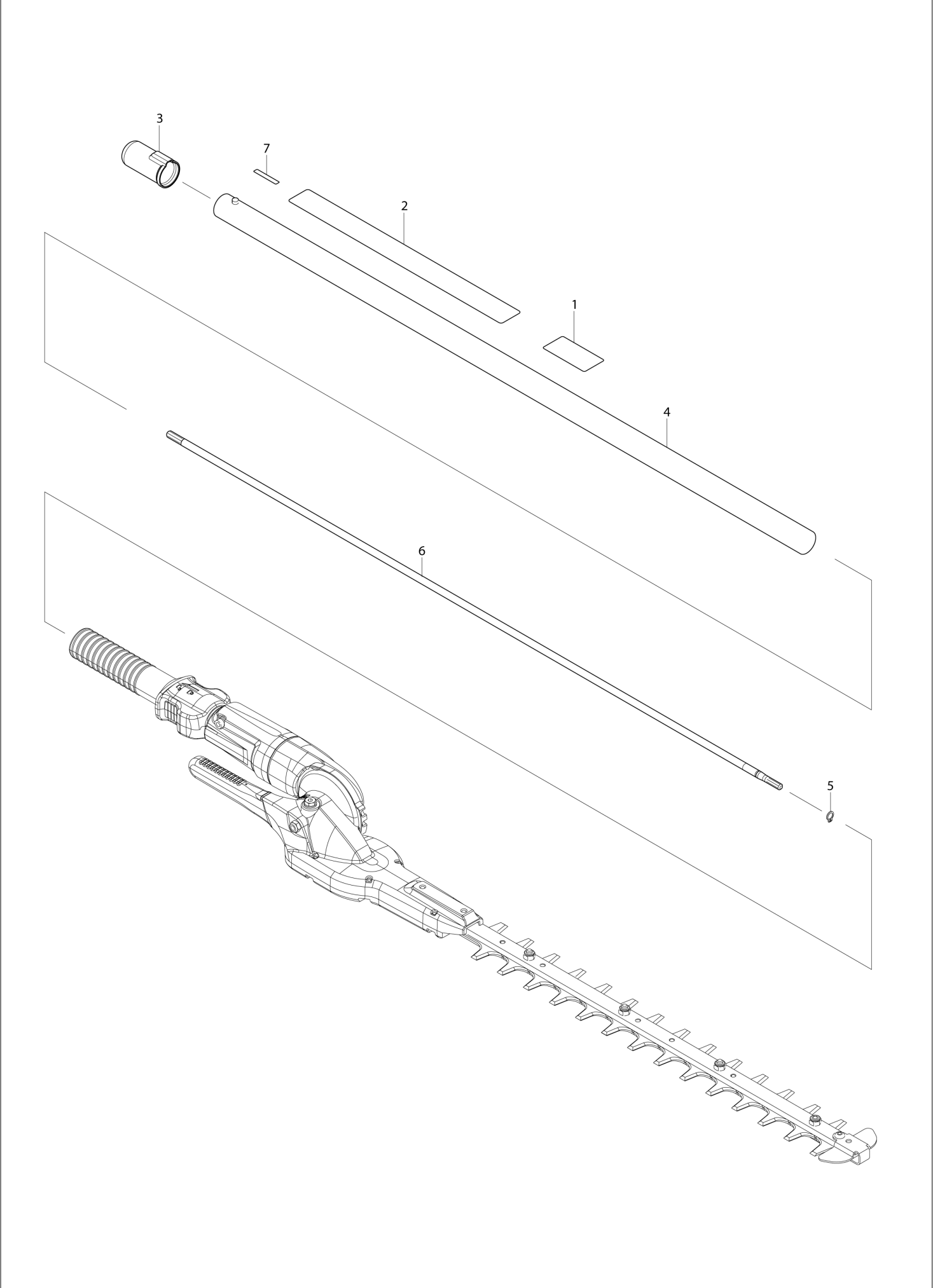
DE	GERMANY
----	---------

Diagram / Parts List

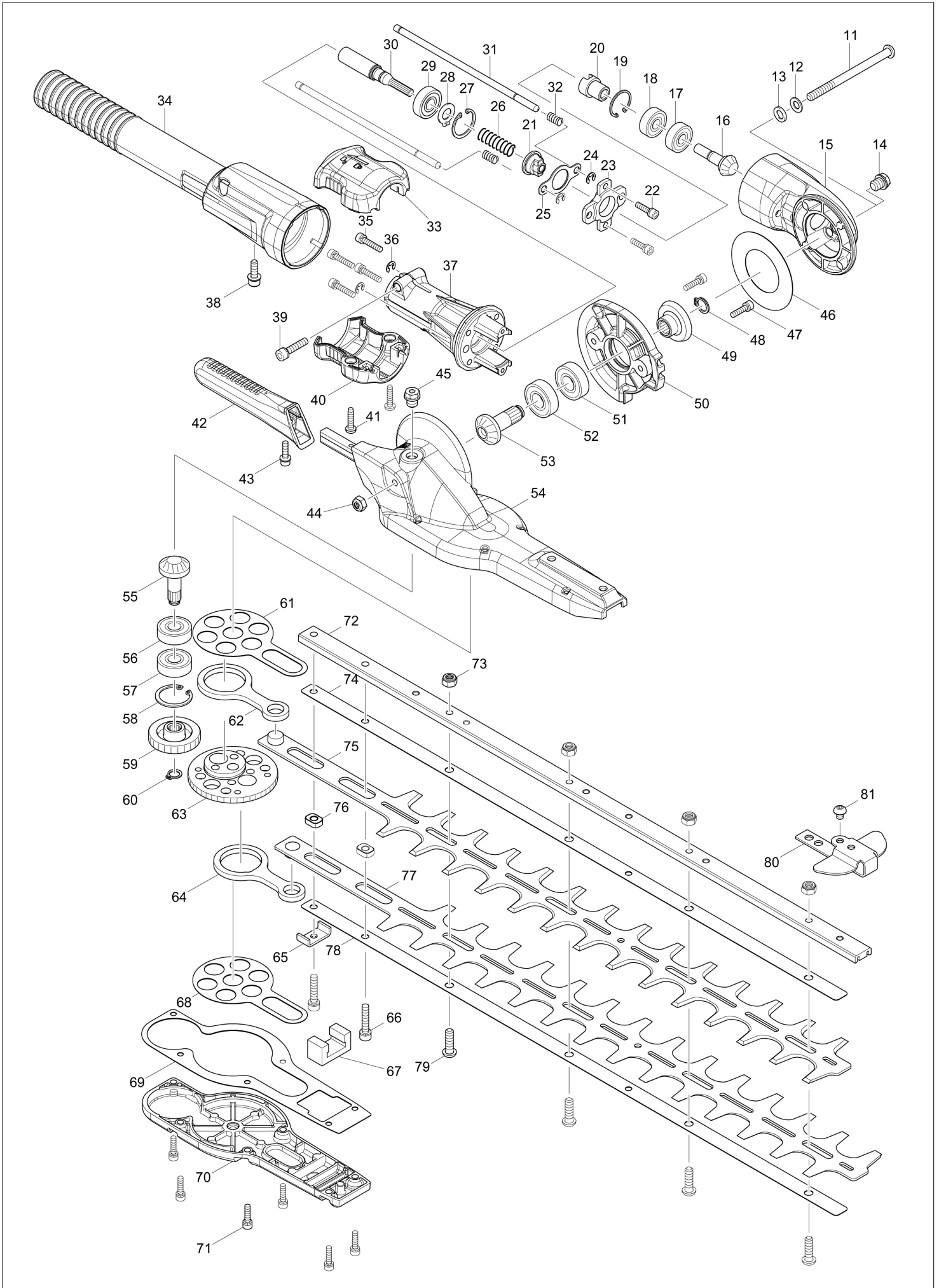
HTCS1

HEDGE TRIMMER ATTACHMENT

(DE) HTCS1 / HEDGE TRIMMER ATTACHMENT



(DE) HTCS1 / HEDGE TRIMMER ATTACHMENT



HTCS1 / HEDGE TRIMMER ATTACHMENT

Item	Sub	Parts No.	Parts Description	Qty	I/C	E/C No.	Close No.	Remark
001		893671-8	DOLMAR LOGO LABEL	1				
002		801B75-2	CAUTION LABEL	1			B4672	
002-1		810V49-2	CAUTION LABEL	1	X	B4672		
003		424434-7	CAP 24	1				
004		142032-2	PIPE COMPLETE	1			B4672	
	C10	803X21-3	SOUND 102DB93DB LABEL	1			B4672	
	D10		INC. 2				B4672	
004-1		144245-1	GRIP PIPE COMPLETE E	1	<	B4672		
	D10		INC. 2			B4672		
005		961003-8	RETAINING RING S-7	1				
006		326088-5	SHAFT A	1			D9802	
006-1		327723-8	SHAFT A	1	O	D9802		
007		814A82-0	DATE CODE LABEL	1				
011		266817-3	H.S. BUTTON HEAD BOLT M6X85	1				
012		232279-7	CONED DISC SPRING 6	1				
013		941151-9	FLAT WASHER 6	1				
014		266818-1	HEX. SOCKET HEX. BOLT M8X8	1				
015		318969-7	JOINT	1			C0561	
015-1		140B55-6	JOINT COMPLETE	1	<	C0561	C9953	
015-2		140S18-4	JOINT COMPLETE	1	<	C9953		
016		227604-5	SPIRAL BEVEL GEAR 9	1			DJ695	
016-1		227A84-1	SPIRAL BEVEL GEAR 9	1	S	DJ695		
017		211032-4	BALL BEARING 608ZZ	1			DF536	
017-1		210191-1	BALL BEARING 608ZZ	1	O	DF536		
018		211032-4	BALL BEARING 608ZZ	1			DF536	
018-1		210191-1	BALL BEARING 608ZZ	1	O	DF536		
019		962102-9	RETAINING RING R-22	1				
020		310534-8	CAM A	1				
021		310535-6	CAM B	1				
022		922126-7	HEX. SOCKET HEAD BOLT M4X16	2				
023		313254-3	HOLDER PLATE	1				
024		961011-9	STOP RING E-4	2				
025		346657-6	SLIDE PLATE	1				
026		231297-2	COMPRESSION SPRING 9	1				
027		962103-7	RETAINING RING R-24	1				
028		961005-4	RETAINING RING S-9	1				
029		210049-4	BALL BEARING 609ZZ	1			DF536	
029-1		210217-9	BALL BEARING 609ZZ	1	O	DF536		
030		142000-5	SPINDLE COMPLETE	1				
031		326256-0	ROD 5	2			B3385	
031-1		326812-6	ROD 5	2	<	B3385		
032		233117-6	COMPRESSION SPRING 6	2				
033		187575-7	SLIDE LEVER SET	1				
	D10		INC. 40					
034		454249-8	COVER	1				
035		265493-0	HEX. SOCKET HEAD BOLT M4X20	4				
036		961011-9	STOP RING E-4	2				
037		318970-2	PIPE HOLDER	1				
038		922223-9	H.S.H.BOLT M5X16 WITH WR	1				
039		922241-7	HEX. SOCKET HEAD BOLT M5X25	1				
040		187575-7	SLIDE LEVER SET	1				
	D10		INC. 33					
041		265995-6	TAPPING SCREW 4X18	2				
042		454248-0	GRIP	1			A9070	
042-1		456369-4	GRIP	1	S	A9070		
043		922128-3	HEX. SOCKET HEAD BOLT M4X16	1			A9070	
043-1		911516-9	PAN HEAD SCREW M4X12	2	S	A9070		
044		252190-7	HEX.LOCK NUT M6-10	1				
045		266818-1	HEX. SOCKET HEX. BOLT M8X8	1				
046		267467-7	FLAT WASHER 36	1				
047		922126-7	HEX. SOCKET HEAD BOLT M4X16	2				
048		961006-2	RETAINING RING S-10	1				
049		227605-3	SPIRAL BEVEL GEAR 22	1			DJ695	
049-1		227A85-9	SPIRAL BEVEL GEAR 22	1	S	DJ695		
050		310533-0	ANGULAR PLATE	1				

B:

Interchange
O : Yes
X : No
< : the new part can be substituted for the current.
> : the current part can be substituted for the new.
S : Interchangeable as a set.

