



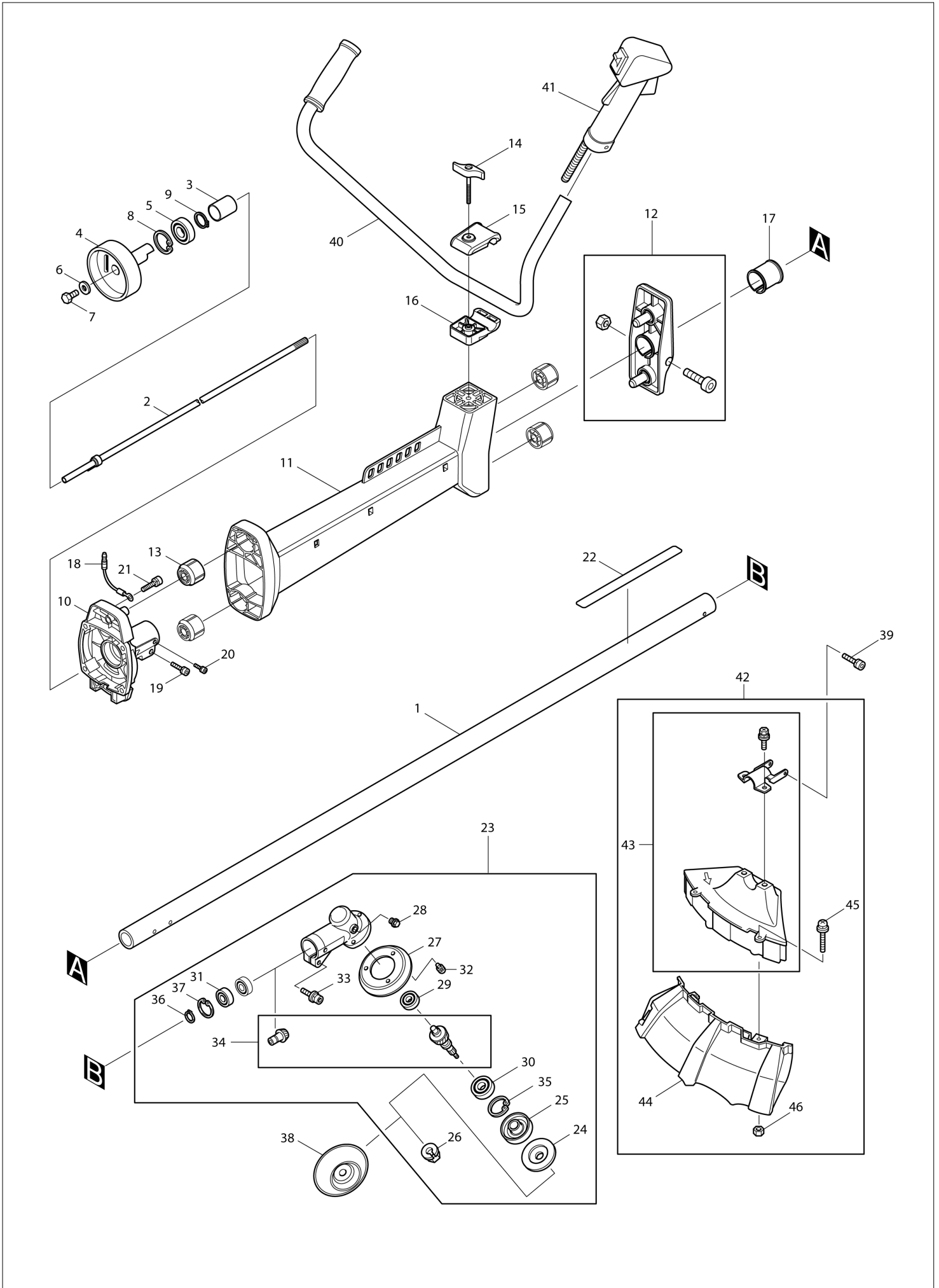
DE	GERMANY
----	---------

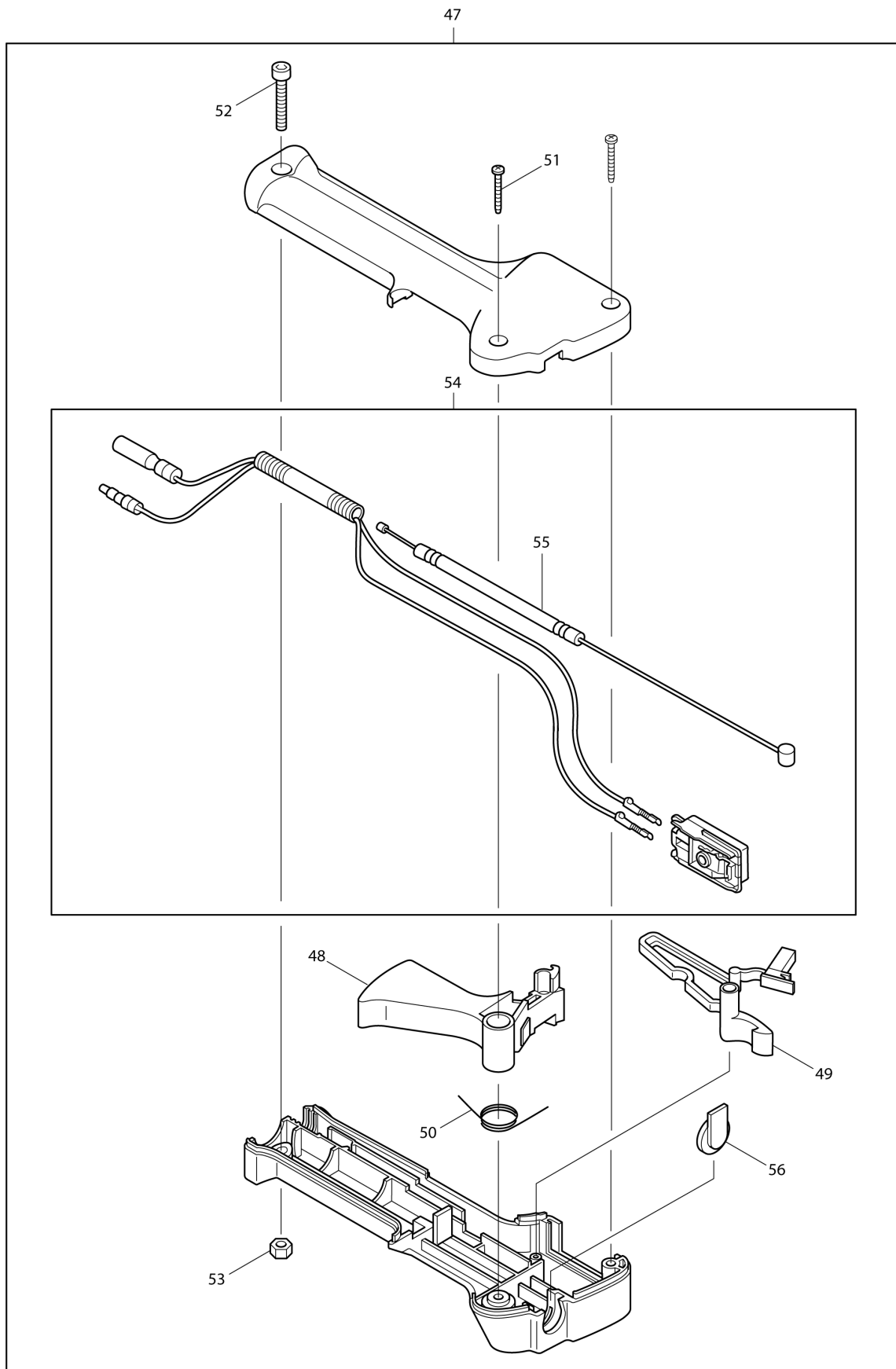
Diagram / Parts List

MS4211

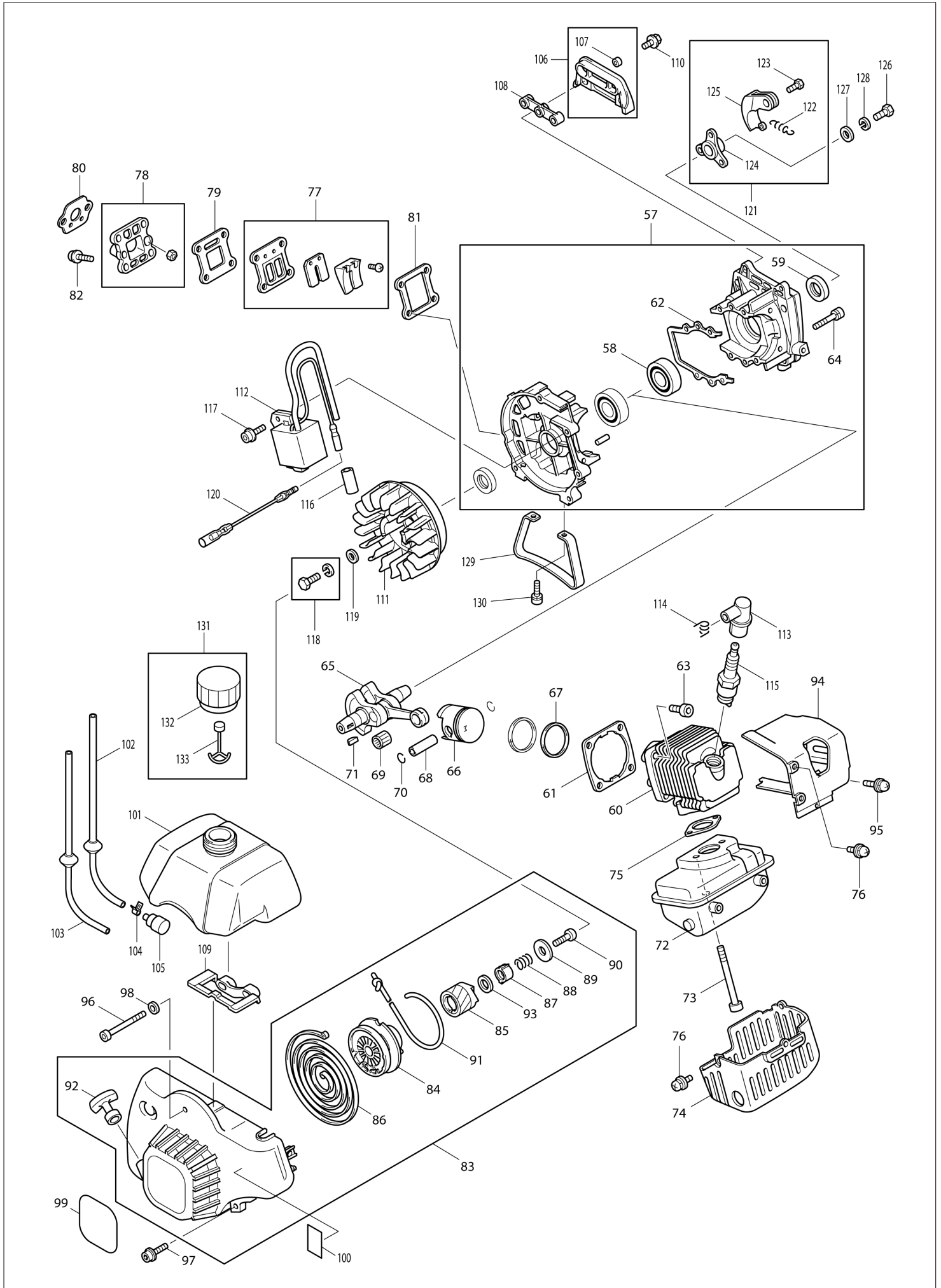
BRUSH CUTTER

(DE) MS4211 / BRUSH CUTTER

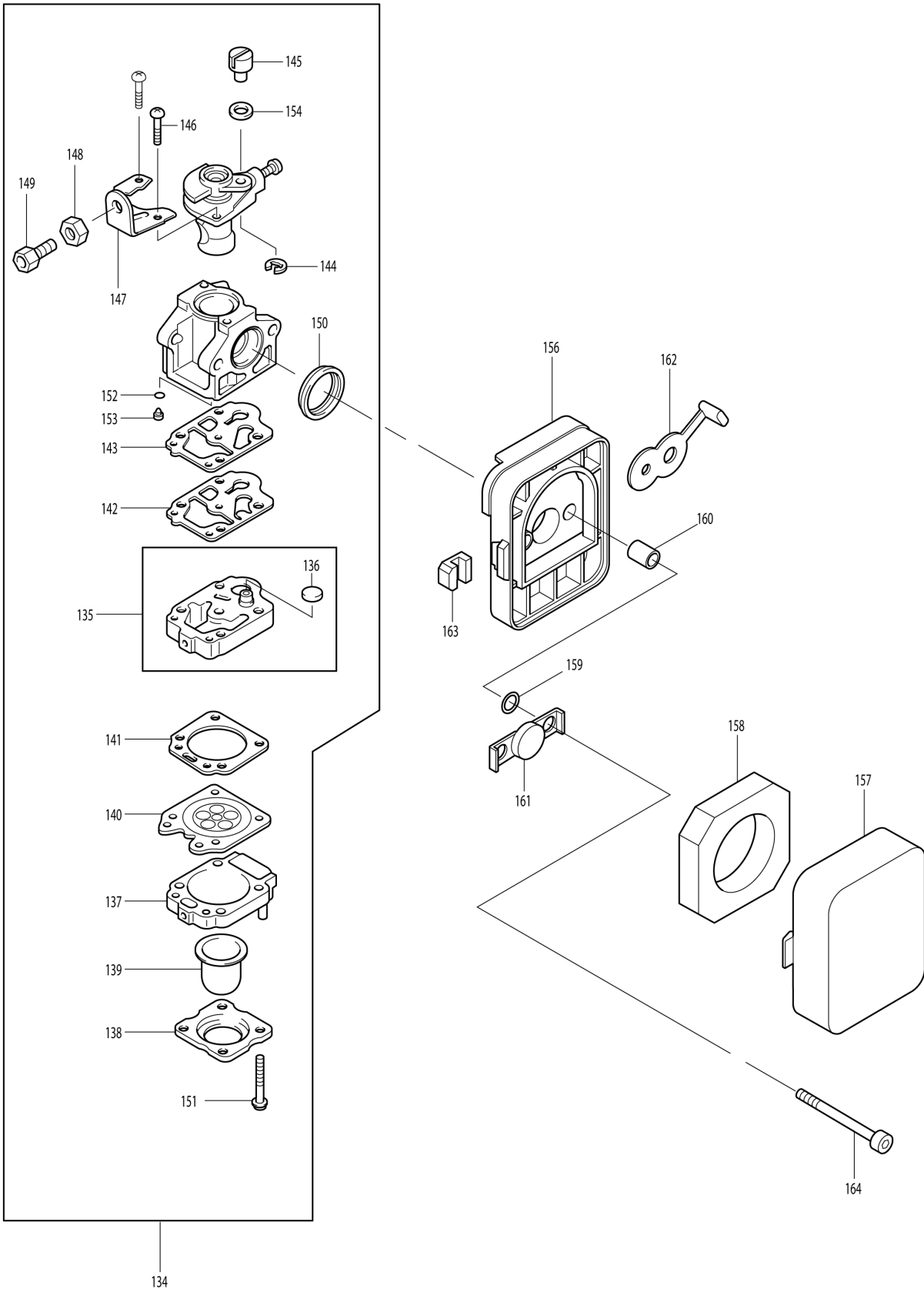




(DE) MS4211 / BRUSH CUTTER



(DE) MS4211 / BRUSH CUTTER



DE	GERMANY
-----------	----------------

MS4211 / BRUSH CUTTER

Item	Sub	Parts No.	Parts Description	Qty	I/C	E/C No.	Close No.	Remark
001		6411057000	SHAFT PIPE COMPLETE 28	1				
002		6341003000	SHAFT COMPLETE	1			Y06152	
002-1		140878-0	SHAFT COMPLETE	1	O	Y06152		
003		6411008000	DAMPER	1			Y06152	
003-1		424403-8	DAMPER	1	O	Y06152		
004		6342002000	CLUTCH DRUM COMPLETE	1			Y06152	
004-1		140846-3	CLUTCH DRUM COMPLETE	1	O	Y06152		
005		0600179810	BALL BEARING 6003DDV	1			B8918	
005-1		211338-0	BALL BEARINNG 6003LLU	1	O	B8918		
006		6202500600	WASHER	1			Y06152	
006-1		267429-5	FLAT WASHER 6	1	O	Y06152		
007		6202500400	BOLT	1			Y06152	
007-1		266746-0	HEX. HEAD BOLT M6X14	1	O	Y06152		
008		0031435000	INNER SNAP RING	1			Y06584	
008-1		962153-2	RETAINING RING R-35	1	O	Y06584		
009		0031517000	OUTER SNAP RING	1			Y06584	
009-1		961057-5	RETAINING RING S-17	1	O	Y06584		
010		6341500700	CLUTCH CASE	1				
011		6414040010	BRACKET HANDLE 1	1				
012		6414040020	BRACKET HANDLE 2	1				
013		6344001120	DAMPER	4				
014		6344001040	HANDLE BOLT	1				
015		6414040030	HANDLE HOLDER 1	1				
016		6414040040	HANDLE HOLDER 2	1				
017		6341500800	SPACER	1				
018		6115501800	WIRE	1				
019		0119069750	SOCKET HEAD BOLT	1				
020		0119059460	SOCKET HEAD BOLT M5X8	1				
021		0119069750	SOCKET HEAD BOLT	4				
022		6419520400	CAUTION LABEL	1				
023		6343004001	GEAR CASE ASS'Y	1			Y06152	
	D10		INC. 24-37				Y06152	
023-1		126272-0	GEAR CASE ASSEMBLY	1	O	Y06152	DC780	
	D10		INC. 24-37			Y06152	DC780	
023-2		122C80-5	GEAR CASE ASSEMBLY	1	O	DC780		
	D10		INC. 24-37,167			DC780		
024		6343004010	CLAMP WASHER	1			Y06432	
024-1		346355-2	CLAMP WASHER	1	<	Y06432	DC780	
024-2		KC00000004	CLAMP WASHER	1	X	DC780		
025		6343004020	RECEIVE WASHER	1			Y06584	
025-1		310458-8	RECEIVE WASHER	1	O	Y06584	DC780	
025-2		KC00000013	RECEIVE WASHER	1	X	DC780		
026		6343004030	NUT M10	1			Y06152	
026-1		264025-0	HEX. NUT M10-17	1	O	Y06152	DC780	
026-2		KC00000016	HEX NUT M10	1	X	DC780		
027		6343004040	GUARD	1			Y06584	
027-1		346354-4	GUARD	1	O	Y06584	DC780	
027-2		KC00000003	GUARD	1	X	DC780		
028		6343004050	BOLT	1			Y06584	
028-1		266637-5	HEX. HEAD BOLT M6X8	1	O	Y06584	DC780	
028-2		KC00000014	HEX BOLT M6X8	1	X	DC780		
029		6343004110	BALL BEARING 629	1			Y06584	
029-1		211342-9	BALL BEARING 629	1	O	Y06584	DC780	
029-2		KC00000009	BALL BEARING 629	1	X	DC780		
030		0600129950	BALL BEARING #6201DD/#6201 2RU	1			Y06584	
030-1		210121-2	BALL BEARING 6201DDU	1	O	Y06584	DC780	
030-2		KC00000012	BALL BEARING 6201DDU	1	X	DC780		
031		0600109940	BALL BEARING 6000ZZ	2			Y06152	
031-1		210120-4	BALL BEARING 6000ZZ	2	O	Y06152	DC780	
031-2		KC00000010	BALL BEARING 6000Z	1	X	DC780		
032		0043505100	SCREW & WASHER ASS'Y	3			Y06152	
032-1		266646-4	PAN HEAD SCREW M5X10	3	O	Y06152	DC780	
032-2		KC00000007	P.H.SCREW M4X20 WITH W	3	X	DC780		
033		6343004160	SOCKET HEAD BOLT M6X30	1			Y06584	
033-1		922353-6	HEX.SOCKET HEAD BOLT M6X30	1	O	Y06584	DC780	

A:

Interchange
O : Yes
X : No
< : the new part can be substituted for the current.
> : the current part can be substituted for the new.
S : Interchangeable as a set.

DE	GERMANY
-----------	----------------

MS4211 / BRUSH CUTTER

Item	Sub	Parts No.	Parts Description	Qty	I/C	E/C No.	Close No.	Remark
033-2		KC00000015	HEX. SOCKET HEAD BOLT M6X30 WR	1	X	DC780		
034		6343005001	SHAFT,CUTTER SET	1			Y06584	
034-1		125844-8	CUTTER SHAFT ASSEMBLY	1	O	Y06584	DC780	
034-2		KC00000018	CUTTER SHAFT ASSEMBLY	1	X	DC780		
035		0031432000	INNER SNAP RING	1			Y06584	
035-1		962151-6	RETAINING RING R-32	1	O	Y06584	DC780	
035-2		KC00000005	RETAINING RING R-32	1	X	DC780		
036		0031510000	OUTER SNAP RING 10	1			Y06584	
036-1		961006-2	RETAINING RING S-10	1	O	Y06584	DC780	
036-2		KC00000006	RETAINING RING S-10	1	X	DC780		
037		0031426000	INNER SNAP RING	1			Y06152	
037-1		257988-7	RETAINING RING (INT) R-26	1	O	Y06152		
038		6413501500	CUP	1			Y05909	
038-1		168526-9	CUP	1	O	Y05909		
039		0140059480	SCREW ASS'Y M5X14	2			Y06152	
039-1		266809-2	P.H.SCREW M5X14 WITH WR	2	O	Y06152		
040		6344002000	HANDLE COMPLETE	1				
041		6415023000	CONTROL LEVER ASS'Y	1				
042		6348001000	PROTECTOR ASS'Y	1			Y05604	
	D10		INC. 43-46				Y05604	
042-1		6348001001	PROTECTOR ASS'Y	1	O	Y05604		
	D10		INC. 43-46			Y05604		
043		6348002000	PROTECTOR ASS'Y	1			Y05604	
043-1		6348002001	PROTECTOR ASS'Y	1	O	Y05604		
	D10		INC. 165,166			Y05604		
044		6258053001	PROTECTOR COMPLETE	1			Y06152	
044-1		140424-9	PROTECTOR COMPLETE	1	O	Y06152		
045		0140059380	SCREW ASSEMBLY	2				
046		0021805000	NUT M5	2			Y06152	
046-1		264035-7	HEX. NUT M5	2	O	Y06152		
047		6415023000	CONTROL LEVER ASS'Y	1				
	D10		INC. 48-56					
048		6215022030	LEVER	1			Y06152	
048-1		452277-7	LONG LEVER	1	O	Y06152		
049		6195013010	LEVER	1			Y06152	
049-1		452278-5	STOP LEVER	1	O	Y06152		
050		6195006050	SPRING	1			Y06152	
050-1		233568-3	TORSION SPRING	1	O	Y06152		
051		6195006060	TAPPING SCREW M4X20	2			Y06152	
051-1		266584-0	TAPPING SCREW 4X20	2	O	Y06152		
052		0119059980	SOCKET HEAD BOLT M5X30	1			Y06172	
052-1		922252-2	HEX. SOCKET HEAD BOLT M5X30	1	O	Y06172		
053		6215022040	NUT M5	1			Y06152	
053-1		264049-6	U NUT M5	1	O	Y06152		
054		6415023010	WIRE SET	1				
	D10		INC. 55					
055		6415023020	CONTROL CABLE	1				
056		6195006150	TOP	1			Y06152	
056-1		451936-0	TOP	1	O	Y06152		
057		5411005001	CRANK CASE ASS'Y	1				
	D10		INC. 58,59,62,64					
058		0600159880	BALL BEARING 6202C3	2			Y06152	
058-1		210202-2	BALL BEARING 6202	2	O	Y06152		
059		0440159971	OIL SEAL	2			Y06152	
059-1		213546-9	OIL SEAL 15	2	O	Y06152		
060		5411500300	CYLINDER	1			Y06152	
060-1		318630-6	CYLINDER	1	O	Y06152		
061		5411500501	CYLINDER GASKET	1			Y06152	
061-1		442156-7	CYLINDER GASKET	1	O	Y06152		
062		5411501200	CRANKCASE GASKET	1			Y06152	
062-1		442157-5	CRANKCASE GASKET	1	O	Y06152		
063		0119069990	HEX. SOCKET HEAD BOLT M6X18	4				
064		0119059940	HEX. SOCKET HEAD BOLT M5X30	4				
065		5412001000	CRANK SHAFT COMPLETE	1			Y06152	
065-1		125795-5	CRANKSHAFT ASSEMBLY	1	O	Y06152	A3519	

A:

Interchange
 O : Yes
 X : No
 < : the new part can be substituted for the current.
 > : the current part can be substituted for the new.
 S : Interchangeable as a set.

MS4211 / BRUSH CUTTER

Item	Sub	Parts No.	Parts Description	Qty	I/C	E/C No.	Close No.	Remark
065-2		142159-8	CRANKSHAFT COMPLETE	1	O	A3519		
066		5412505301	PISTON	1			Y06152	
066-1		318631-4	PISTON	1	O	Y06152		
067		5402500600	PISTON RING	2			Y06152	
067-1		257309-3	PISTON RING	2	O	Y06152		
068		5412505200	PISTON PIN	1			Y06152	
068-1		257797-4	PISTON PIN	1	O	Y06152		
069		5412501300	NEEDLE ROLLER BEARING	1			Y06152	
069-1		212085-6	NEEDLE CAGE1014	1	O	Y06152		
070		0565099990	CLIP	2			Y06152	
070-1		233983-1	CLIP	2	O	Y06152		
071		0323039990	WOODRUFF KEY	1			Y06152	
071-1		254040-2	WOODRUFF KEY 3	1	O	Y06152		
072		5413068000	MUFFLER	1			Y06152	
072-1		168589-5	EXHAUST MUFFLER	1	O	Y06152	B4354	
072-2		161573-9	MUFFLER	1	O	B4354		
073		0119069780	HEX. SOCKET HEAD BOLT M6X60	2			Y06152	
073-1		266589-0	HEX. SOCKET HEAD BOLT M6X60	2	O	Y06152		
074		5413507500	MUFFLER COVER	1				
075		5323500600	MUFFLER GASKET	1			Y06152	
075-1		168584-5	MUFFLER GASKET	1	O	Y06152		
076		0140059480	SCREW ASS'Y M5X14	4			Y06152	
076-1		266809-2	P.H.SCREW M5X14 WITH WR	4	O	Y06152		
077		5413006000	LEAD VALVE ASS'Y	1			Y06152	
077-1		126211-0	LEAD VALVE ASSEMBLY	1	O	Y06152		
078		5403048001	INSULATOR ASS'Y	1			Y05581	
078-1		5413509101	INSULATOR ASS'Y	1	O	Y05581	Y06152	
078-2		453971-4	INSULATOR	1	O	Y06152		
079		5403500600	INSULATOR GASKET	1			Y06152	
079-1		442189-2	INSULATOR GASKET	1	O	Y06152		
080		5416504000	GASKET (CARBURETOR)	1				
081		5413502800	BRACKET GASKET	1			Y06152	
081-1		442160-6	LEAD VALVE GASKET	1	O	Y06152		
082		0119059640	SOCKET HEAD BOLT M5X25	4			Y06152	
082-1		266793-1	HEX. S.H.B. M5X25 WITH WR	4	O	Y06152		
083		5415061000	STARTER REWIND	1				
	D10		INC. 84-93					
084		5415001010	REEL	1			Y06152	
084-1		452766-2	REEL	1	O	Y06152		
085		5415001020	RATCHET	1			Y06152	
085-1		452767-0	RATCHET	1	O	Y06152		
086		5415001030	SPIRAL SPRING	1			Y06152	
086-1		233993-8	SPIRAL SPRING	1	O	Y06152		
087		5415001040	RATCHET GUIDE	1			Y06152	
087-1		452768-8	RATCHET GUIDE	1	O	Y06152		
088		5415001050	FRICTION SPRING	1			Y06152	
088-1		233994-6	FRICTION SPRING	1	O	Y06152		
089		5415001060	WASHER	1			Y06152	
089-1		267443-1	WASHER 5	1	O	Y06152		
090		5245001010	BIND SCREW	1			Y06152	
090-1		266670-7	PAN HEAD SCREW M5X18	1	O	Y06152		
091		5415001140	STARTER ROPE	1			Y06152	
091-1		444030-5	STARTER ROPE	1	O	Y06152		
092		5305002110	STARTER KNOB	1			Y06152	
092-1		140884-5	STARTER KNOB COMPLETE	1	O	Y06152		
093		5415001220	THRUST WASHER	1			Y06152	
093-1		267444-9	THRUST WASHER 10	1	O	Y06152		
094		5415507600	CYLINDER COVER	1				
095		0140059330	SCREW M5X20(W,SW)	1			A8718	
095-1		265A08-9	PAN HEAD SCREW M5X20	1	O	A8718		
096		0119059661	SOCKET HEAD BOLT M5X20	1			Y06152	
096-1		266592-1	HEX. SOCKET HEAD BOLT M5X50	1	O	Y06152		
097		0119059790	SOCKET HEAD BOLT	2				
098		0031005000	WASHER M5	1			Y06152	
098-1		267446-5	WASHER 5	1	O	Y06152		

A:

Interchange
O : Yes
X : No
< : the new part can be substituted for the current.
> : the current part can be substituted for the new.
S : Interchangeable as a set.

MS4211 / BRUSH CUTTER

Item	Sub	Parts No.	Parts Description	Qty	I/C	E/C No.	Close No.	Remark
099		6419520500	MODEL LABEL	1				
101		5416504801	FUEL TANK	1			Y06152	
101-1		453969-1	FUEL TANK	1	O	Y06152	98385	
101-2		454559-3	FUEL TANK	1	O	98385		
102		0851279970	TUBE	1			Y06152	
102-1		168765-1	TUBE COMPLETE	1	O	Y06152		
103		0851289960	TUBE	1			Y06152	
103-1		168766-9	TUBE COMPLETE	1	O	Y06152		
104		0561059990	HOSE CLAMP	3			Y06152	
104-1		345920-4	HOSE CLAMP	3	O	Y06152		
105		5236503900	FILTER	1			Y06152	
105-1		163447-0	FUEL FILTER	1	O	Y06152	B3537	
105-2		163447-0	FUEL FILTER	1	O	B3537		
106		5416057000	FUEL TANK BRACKET ASS'Y	1			Y06964	
	D10		INC. 107				Y06964	
106-1		168586-1	FUEL TANK BRACKET ASSEMBLY	1	O	Y06964	A8052	
	D10		INC. 107			Y06964	A8052	
106-2		455434-6	FUEL TANK BRACKET	1	S	A8052		
	D10		INC. 107			A8052		
107		0230059990	SPACER	2			Y06152	
107-1		346438-8	SPACER	2	O	Y06152		
108		5416505700	DAMPER	1			Y06152	
108-1		424335-9	BRACKET DAMPER	1	O	Y06152	A8052	
108-2		424660-8	BRACKET DAMPER	1	S	A8052		
109		5416501900	DAMPER	1			Y07997	
109-1		424336-7	FUEL TANK DAMPER	1	O	Y07997		
110		0130059980	BOLT ASS'Y M5X14	2			Y06152	
110-1		266595-5	HEX. HEAD BOLT M5X14	2	O	Y06152		
111		5417023010	FLYWHEEL	1			Y06152	
111-1		318739-4	FLYWHEEL MAGNET	1	O	Y06152		
112		5417041020	IGNITION COIL	1			Y06152	
	C10	5417023030	WIRE COMPLETE	1			Y06152	
	C11	140885-3	WIRE COMPLETE	1	O	Y06152	Y06152	
112-1		168587-9	IGNITION COIL	1	O	Y06152		
	C11	140885-3	WIRE COMPLETE	1	O	Y06152		
113		5417037001	CAP COVER	1			Y06152	
113-1		125936-3	CAP COVER ASSEMBLY	1	O	Y06152		
114		0654009931	PLUG CAP SPRING	1			Y06152	
114-1		324891-8	PLUG CAP SPRING	1	O	Y06152		
115		0650149661	SPARK PLUG	1			Y06152	
115-1		168648-5	SPARK PLUG (BPMR7A)	1	O	Y06152		
116		5417500300	TUBE	1			Y06152	
116-1		422059-1	TUBE	1	O	Y06152		
117		0119059790	SOCKET HEAD BOLT	2				
118		0130069970	BOLT ASS'Y	1			Y06152	
118-1		266596-3	HEX. HEAD BOLT M6X16 WITH W	1	O	Y06152		
119		0200069920	WASHER M6	1			Y06152	
119-1		267427-9	FLAT WASHER 7	1	O	Y06152		
120		5607005000	WIRE COMPLETE (2)	1				
121		6452002000	CLUTCH	1			Y06152	
	D10		INC. 122-125				Y06152	
121-1		140897-6	CLUTCH	1	O	Y06152		
	D10		INC. 122-125			Y06152		
122		6452500400	SPRING	3			Y06309	
122-1		234291-3	TENSION SPRING 6	3	O	Y06309		
123		6452500600	CLUTCH BOLT	3			Y06309	
123-1		266825-4	SHOULDER HEX. BOLT M8	3	O	Y06309		
124		6452500300	HOLDER	1			Y06309	
124-1		313256-9	HOLDER	1	O	Y06309		
125		6452003000	CLUTCH SHOE COMPLETE	3			Y06309	
125-1		168803-9	CLUTCH SHOE COMPLETE	3	O	Y06309		
126		6202500400	BOLT	1			Y06152	
126-1		266746-0	HEX. HEAD BOLT M6X14	1	O	Y06152		
127		6202500600	WASHER	1			Y06152	
127-1		267429-5	FLAT WASHER 6	1	O	Y06152		

A:

Interchange
O : Yes
X : No
< : the new part can be substituted for the current.
> : the current part can be substituted for the new.
S : Interchangeable as a set.

DE	GERMANY
-----------	----------------

MS4211 / BRUSH CUTTER

Item	Sub	Parts No.	Parts Description	Qty	I/C	E/C No.	Close No.	Remark
128		0032006000	SPRING WASHER	1				
129		6305500500	STAND	1			Y06152	
129-1		346286-5	STAND	1	O	Y06152		
130		0119069720	SOCKET HEAD BOLT M6X14	2				
131		5256059000	FUEL TANK CAP COMPLETE	1			Y06152	
	D10		INC. 132,133				Y06152	
131-1		168668-9	FUEL TANK CAP COMPLETE	1	O	Y06152		
	D10		INC. 132,133			Y06152		
132		5256058000	FUEL TANK CAP	1			Y06152	
132-1		452920-8	FUEL TANK CAP	1	O	Y06152		
133		5256067000	STRAP	1			Y06152	
133-1		140436-2	STRAP COMPLETE	1	O	Y06152		
134		5416046000	CARBURETOR	1				
	D10		INC. 135-154					
135		5236046130	PUMP BODY ASS'Y	1			Y06152	
	D10		INC. 136				Y06152	
135-1		140989-1	PUMP BODY ASSEMBLY	1	O	Y06152		
	D10		INC. 136			Y06152		
136		5016004010	INLET SCREEN	1			Y06152	
136-1		352010-6	INLET SCREEN	1	O	Y06152	Y07179	
136-2		WJ00014070	INLET SCREEN	1	O	Y07179		
137		5236046060	AIR PURGE BODY ASS'Y	1			Y06152	
137-1		140988-3	AIR PURGE BODY ASSEMBLY	1	O	Y06152		
138		5236046050	PRIMER PUMP COVER	1			Y06152	
138-1		346270-0	PRIMER PUMP COVER	1	O	Y06152		
139		5246001150	PRIMER PUMP	1			Y06152	
139-1		424314-7	PRIMER PUMP	1	O	Y06152		
140		5316005250	METERING DIAPHRAGM ASS'Y	1			Y06152	
140-1		168767-7	METALING DIAPHRAGM	1	O	Y06152		
141		5236046040	METERING DIAPHRAGM GASKET	1			Y06152	
141-1		442154-1	METERING DIAPHRAGM GASKET	1	O	Y06152		
142		5246001040	PUMP DIAPHRAGM	1			Y06152	
142-1		168575-6	PUMP DIAPHRAGM	1	O	Y06152	Y07366	
142-2		WJ00009599	PUMP DIAPHRAGM	1	O	Y07366		
143		5246001030	PUMP GASKET	1			Y06152	
143-1		442172-9	PUMP GASKET	1	O	Y06152		
144		5316005120	RING	1			Y06152	
144-1		257964-1	STOP RING E-3	1	O	Y06152		
145		5236018040	SWIVEL	1			Y06152	
145-1		325922-6	SWIVEL	1	O	Y06152		
146		5246001240	THROTTLE COLLAR SCREW	2			Y06152	
146-1		266704-6	PAN HEAD SCREW M3X10	2	O	Y06152		
147		5236052020	BRACKET CABLE	1			Y06152	
147-1		346491-4	BRACKET CABLE	1	O	Y06152		
148		5316005450	CABLE ADJUST NUT	1			Y06152	
148-1		264065-8	CABLE ADJUST NUT M6	1	O	Y06152		
149		5216008010	CABLE ADJUST SCREW M6X8	1			Y06152	
149-1		266795-7	ADJUST SCREW	1	O	Y06152		
150		5236018020	RING PACKING	1			Y06152	
150-1		424444-4	PACKING RING	1	O	Y06152		
151		5236046010	PUMP COVER SCREW	4			Y06152	
151-1		266582-4	TAPPING SCREW 3X24	4	O	Y06152		
152		5246001010	O RING	1			Y06152	
152-1		213538-8	O RING 2	1	O	Y06152		
153		5416046010	JET #50	1				
154		5236052030	WASHER	1				
156		5413044010	AIR CLEANER HOUSING	1			Y06152	
156-1		453981-1	AIR CLEANER HOUSING	1	O	Y06152		
157		5233013020	AIR CLEANER COVER	1			Y06152	
157-1		453982-9	AIR CLEANER COVER	1	O	Y06152		
158		5413044020	AIR FILTER	1			Y06152	
158-1		443180-3	AIR FILTER	1	O	Y06152		
159		5313003050	WASHER	1			Y06152	
159-1		424523-8	WASHER	1	O	Y06152		
160		5233013030	SLEEVE	2			Y06152	

A:

Interchange
 O : Yes
 X : No
 < : the new part can be substituted for the current.
 > : the current part can be substituted for the new.
 S : Interchangeable as a set.

