



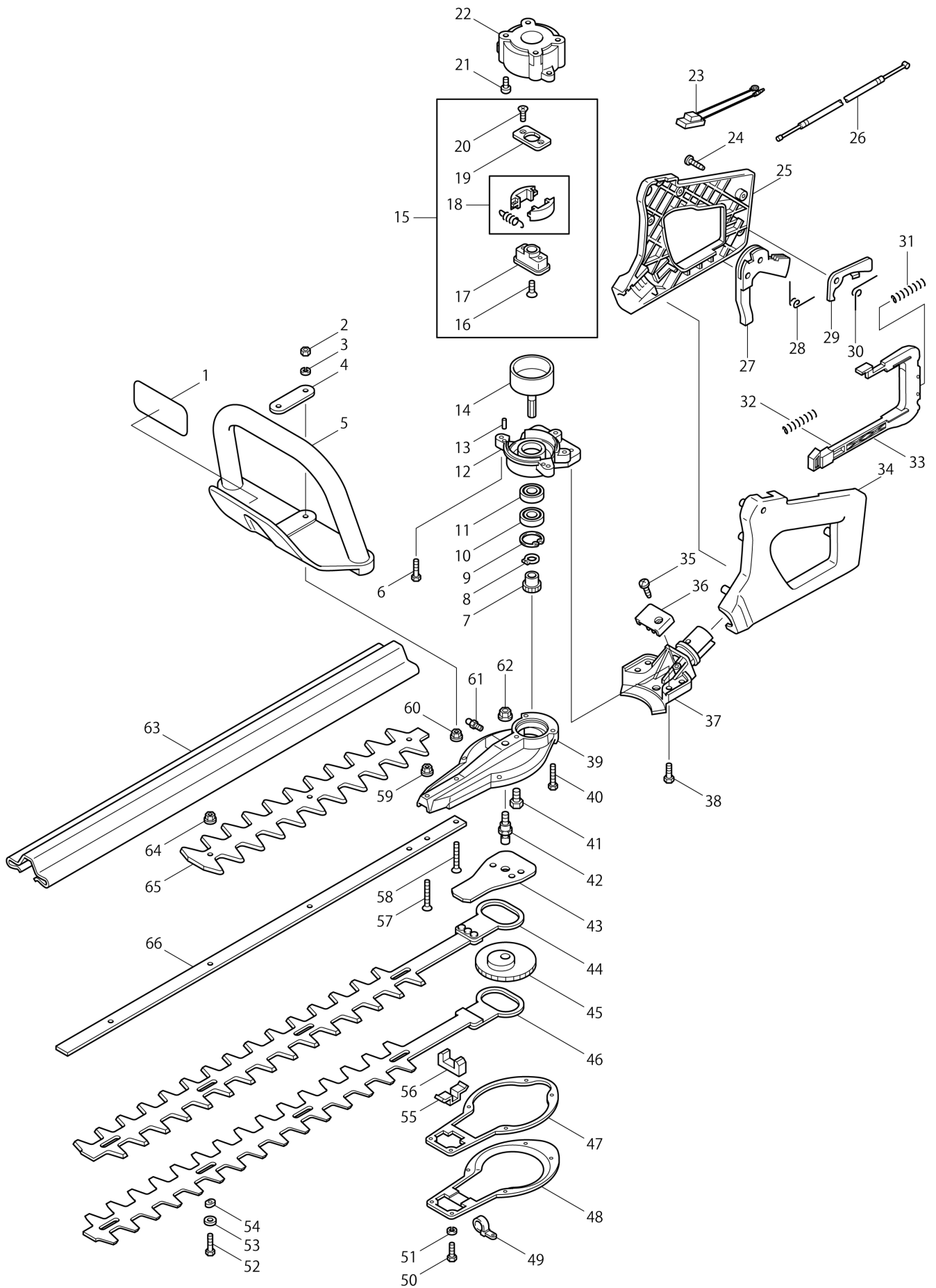
DE	GERMANY
----	---------

Diagram / Parts List

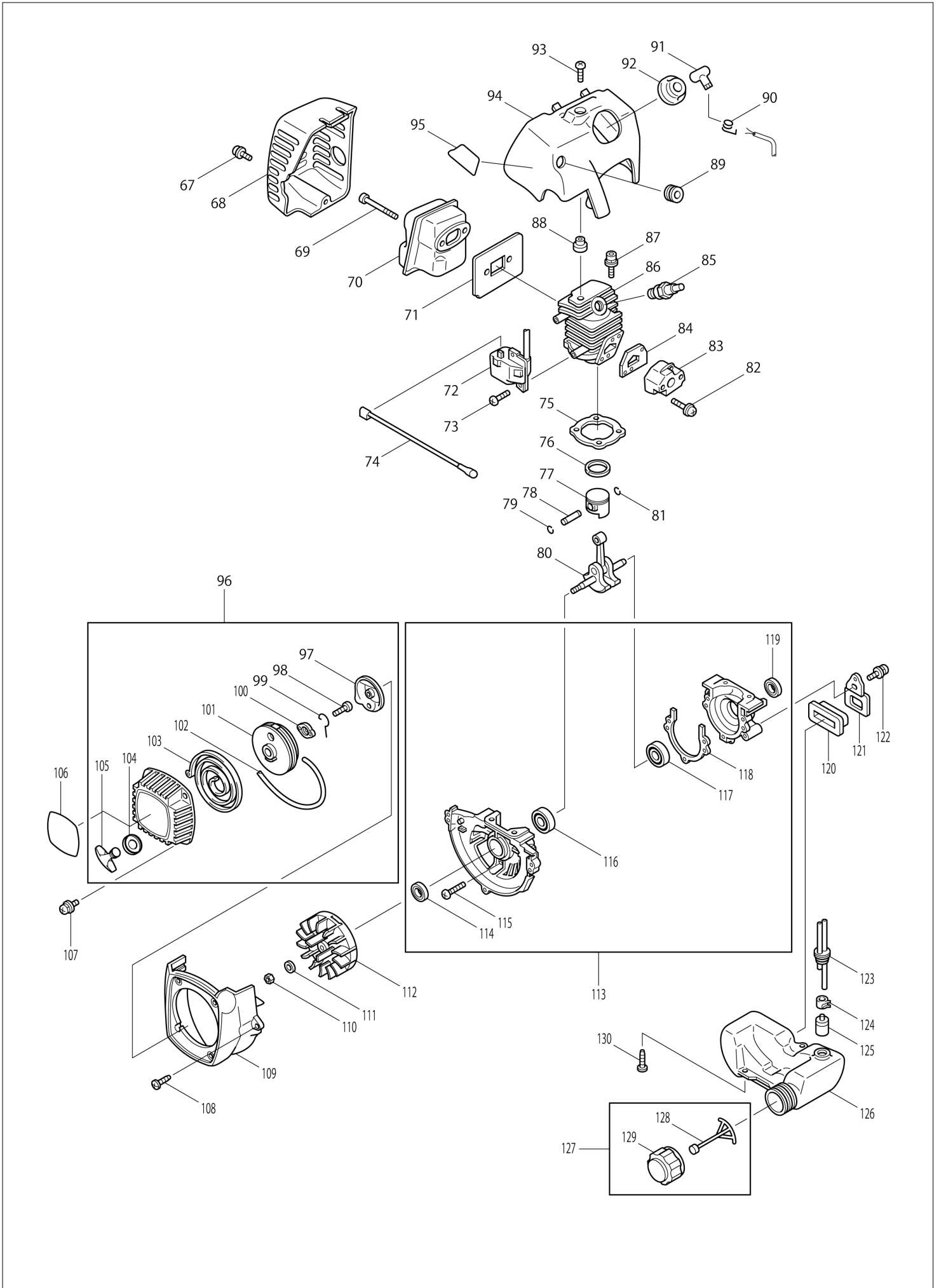
HT2249D

ENGINE HEDGE TRIMMER

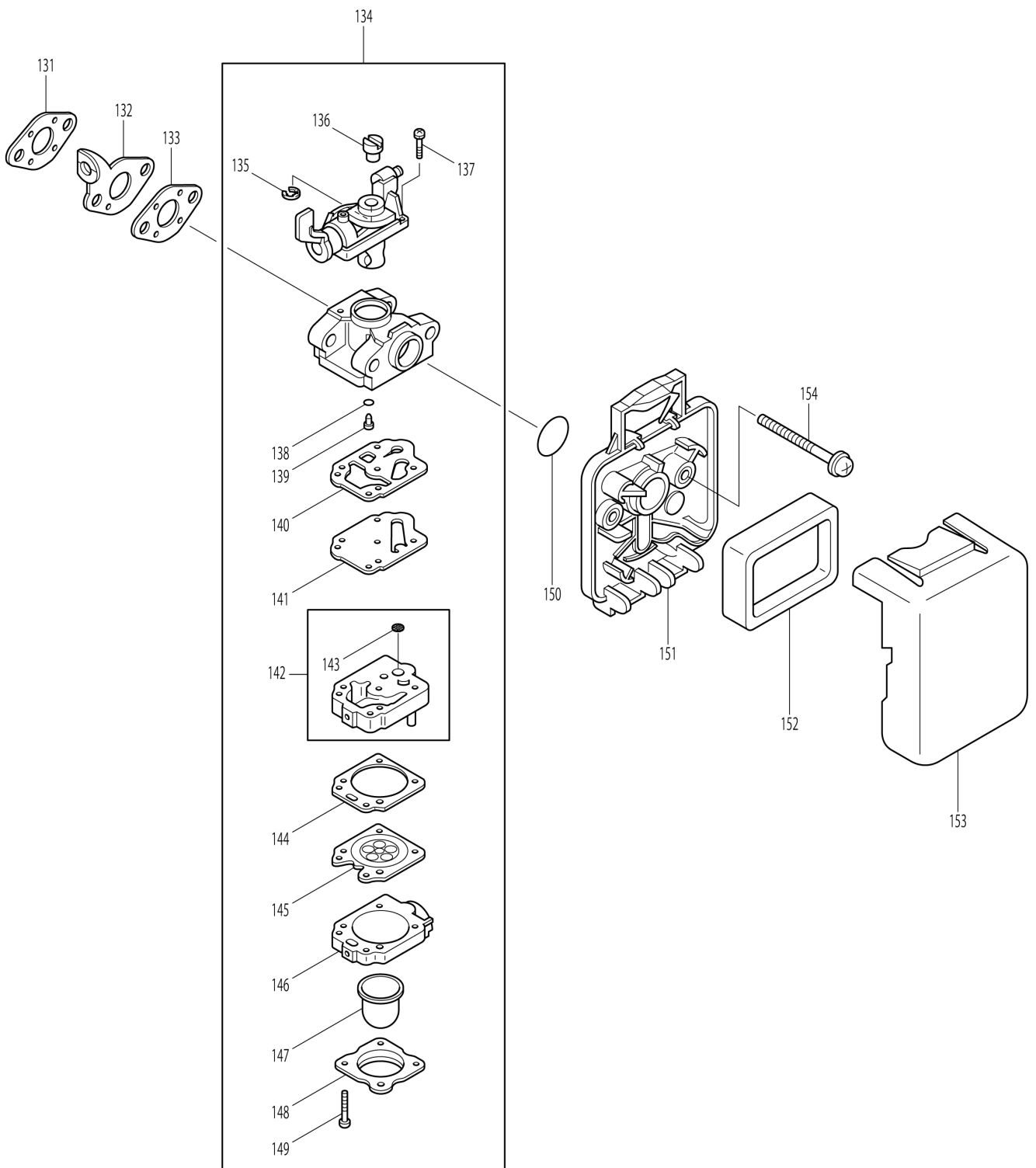
(DE) HT2249D / ENGINE HEDGE TRIMMER



(DE) HT2249D / ENGINE HEDGE TRIMMER



(DE) HT2249D / ENGINE HEDGE TRIMMER



DE	GERMANY
-----------	----------------

HT2249D / ENGINE HEDGE TRIMMER

Item	Sub	Parts No.	Parts Description	Qty	I/C	E/C No.	Close No.	Remark
001		0736359980	CAUTION LABEL	1				
002		030051600N	NYLON NUT	2				
003		032050000N	SPRING WASHER 5	2				
004		303331100N	FRONT HANDLE PLATE	1			Y06431	
004-1		346756-4	FRONT HANDLE PLATE	1	O	Y06431		
005		30333011PK	HANDLE,FRONT	1				
006		065052000N	TORX SCREW M5X20	3			Y06489	
006-1		XNR0000098	TORX SCREW M5X20	3	O	Y06489		
007		303355300N	GEAR	1				
008		045001202N	SNAP RING S-12	1			Y06887	
008-1		XNR0000067	SNAP RING S-12	1	O	Y06887		
009		045002800N	SNAP RING R-28	1			Y06489	
009-1		XNR0000073	SNAP RING R-28	1	O	Y06489		
010		035600103N	BALL BEARING 6001LL	1			Y06489	
010-1		XNR0000053	BALL BEARING 6001LL	1	O	Y06489		
011		035600103N	BALL BEARING 6001LL	1			Y06489	
011-1		XNR0000053	BALL BEARING 6001LL	1	O	Y06489		
012		370355100N	FLANGE	1				
013		048041200N	PIN	2			Y06887	
013-1		XNR0000076	PIN	2	O	Y06887		
014		303555200N	CLUTCH DRUM	1				
015		370540000N	CLUTCH ASS'Y	1				
	D10		INC. 16-20					
016		005061800N	FLAT HEAD SCREW M6X18	1				
017		370540100N	CLUTCH GUIDE	1			Y06891	
017-1		XNR0000460	CLUTCH GUIDE	1	O	Y06891		
018		305077000N	CLUTCH SHOE WITH SPRING	1				
019		305040411N	CLUTCH PLATE	1				
020		005041200N	FLAT HEAD SCREW M4X12	2				
021		002051200N	SCREW M5X12	4			Y06887	
021-1		XNR0000002	SCREW M5X12	4	O	Y06887		
022		303350100N	ENGINE BASE	1				
023		099832620N	SWITCH,STOP	1			Y06870	
023-1		XNR0000136	STOP SWITCH	1	O	Y06870		
024		303341300N	TAPPING SCREW 4.5X16	5				
025		37094021PK	HANDLE(B),REAR	1				
026		099861011N	WIRE,THROTTLE	1				
027		30334033PB	LEVER,THROTTLE	1				
028		303340510N	SPRING,THROTTLE LEVER	1				
029		37094060PB	LEVER,LOCK	1			Y07217	
029-1		XNR0000510	LEVER,LOCK	1	O	Y07217		
030		303340700N	LOCK LEVER SPRING	1				
031		370941300N	SPRING, ROTATE LEVER	1			Y08777	
031-1		XNR0000466	SPRING LOCK PIN 370941300	1	O	Y08777		
032		370941300N	SPRING, ROTATE LEVER	1			Y08777	
032-1		XNR0000466	SPRING LOCK PIN 370941300	1	O	Y08777		
033		37094081PB	LEVER, ROTATE	1				
034		37094010PK	HANDLE(A),REAR	1				
035		303341300N	TAPPING SCREW 4.5X16	1				
036		37094120PK	HOLDER,THROTTLE WIRE	1				
037		37114100PK	HOLDER,REAR HANDLE	1				
038		065061800N	TORX SCREW M6X18	2			Y06489	
038-1		XNR0000113	TORX SCREW M6X18	2	O	Y06489		
039		303510100N	CASE	1				
040		065052500N	TORX SCREW M5X25	2				
041		065051500N	TORX SCREW M5X15	1				
042		303510700N	CRANK SHAFT	1				
043		303511100N	CRANK PLATE	1				
044		303522000N	CUTTER BLADE	1				
045		303510800N	CRANK GEAR	1				
046		303522000N	CUTTER BLADE	1				
047		303513000N	GASKET	1				
048		303510200N	CASE COVER	1				
049		099861500N	CLAMP	1				
050		065041200N	TORX BOLT M4X12	6				

Interchange
O : Yes
X : No
< : the new part can be substituted for the current.
> : the current part can be substituted for the new.
S : Interchangeable as a set.

HT2249D / ENGINE HEDGE TRIMMER

Item	Sub	Parts No.	Parts Description	Qty	I/C	E/C No.	Close No.	Remark
051		032040000N	SPRING WASHER 4	6				
052		065052000N	TORX SCREW M5X20	4			Y06489	
052-1		XNR0000098	TORX SCREW M5X20	4	O	Y06489		
053		306020400N	BLADE BOLT WASHER	4				
054		303520900N	GUIDE BLOCK	4				
055		303511200N	PLATE	1				
056		303510400N	GASKET	1				
057		068053500N	BT M5X35	1				
058		068053500N	BT M5X35	1				
059		030051400N	NUT,FLANGE M5	1				
060		030051400N	NUT,FLANGE M5	1				
061		029060400N	NIPPLE	1			Y06887	
061-1		XNR0000022	NIPPLE	1	O	Y06887		
062		030081400N	NUT,FLANGE M8	1				
063		303560100N	CUTTER BLADE COVER	1				
064		030051100N	NYLON NUT M5	4				
065		303329000N	PROTECTOR	1				
066		303520100N	CUTTER GUIDE	1				
067		0140059550	SCREW M5X14	1			A8718	
067-1		265A10-2	PAN HEAD SCREW M5X14	1	O	A8718		
068		5193500201	MUFFLER COVER	1				
069		0119059600	SOCKET HEAD BOLT M5X45	2			Y06152	
069-1		266697-7	SOCKET HEAD BOLT M5X45	2	O	Y06152		
070		5193020000	EXHAUST MUFFLER	1				
071		5193500302	MUFFLER INSULATOR	1				
072		5197003021	COIL	1				
073		0043704200	SCREW ASS'Y M4X20	2				
074		5257018001	WIRE COMPLETE	1			Y06152	
074-1		638665-4	LEAD UNIT	1	O	Y06152		
075		5191500301	CYLINDER GASKET	1			Y06152	
075-1		442173-7	CYLINDER GASKET	1	O	Y06152		
076		5212500500	PISTON RING	1			Y06152	
076-1		257320-5	PISTON RING	1	O	Y06152		
077		5192501701	PISTON	1			Y06172	
077-1		318831-6	PISTON	1	O	Y06172		
078		5192500500	PISTON PIN	1			Y06152	
078-1		268277-5	PISTON PIN	1	O	Y06152		
079		0565089970	CLIP	1			Y06152	
079-1		233976-8	CLIP	1	O	Y06152		
080		5192003004	CRANKSHAFT COMPLETE	1				
081		0565089970	CLIP	1			Y06152	
081-1		233976-8	CLIP	1	O	Y06152		
082		0140059400	SCREW ASSEMBLY	2			A8718	
082-1		265A09-7	PAN HEAD SCREW M5X20	2	O	A8718		
083		5213001000	INSULATOR COMPLETE	1				
084		5233503902	INSULATOR GASKET	1			Y06152	
084-1		424448-6	INSULATOR GASKET	1	O	Y06152		
085		0650149640	SPARK PLUG	1				
086		5191500901	CYLINDER	1			Y06152	
086-1		318785-7	CYLINDER	1	O	Y06152		
087		0119059730	SOCKET HEAD BOLT M5X20	2			Y06152	
087-1		266814-9	HEX SOCKET HEAD BOLT M5X20	2	O	Y06152		
088		5503503001	SPACER	1				
089		5257500300	GROMMET	1			Y06152	
089-1		424313-9	GROMMET	1	O	Y06152		
090		0654009931	PLUG CAP SPRING	1			Y06152	
090-1		324891-8	PLUG CAP SPRING	1	O	Y06152		
091		0655009870	PLUG CAP	1			Y06152	
091-1		424337-5	PLUG CAP	1	O	Y06152		
092		5197500002	PLUG CAP COVER	1				
093		0140059490	SCREW	1				
094		5195500900	CYLINDER COVER	1				
095		6169508100	TRADE MARK LABEL "DOLMAR"	1			Y06152	
095-1		892914-5	DOLMAR LOGO LABEL	1	O	Y06152		
096		5195003003	REWIND STARTER	1				

Interchange
O : Yes
X : No
< : the new part can be substituted for the current.
> : the current part can be substituted for the new.
S : Interchangeable as a set.

DE	GERMANY
-----------	----------------

HT2249D / ENGINE HEDGE TRIMMER

Item	Sub	Parts No.	Parts Description	Qty	I/C	E/C No.	Close No.	Remark
	D10		INC.97-105					
097		5195500000	PULLEY	1			Y06152	
097-1		168483-1	PULLEY	1	O	Y06152		
098		5195002060	SET SCREW	1			Y06152	
098-1		266585-8	TAPPING SCREW 5X12	1	O	Y06152		
099		5195002100	SWING ARM	1			Y06152	
099-1		325923-4	SWING ARM	1	O	Y06152		
100		5195002110	COLLAR	1			Y06152	
100-1		451938-6	COLLAR	1	O	Y06152		
101		5195002030	REEL	1			Y06172	
101-1		452972-9	REEL	1	O	Y06172		
102		5255016020	STARTER ROPE	1			Y06152	
102-1		444024-0	STARTER ROPE	1	O	Y06152		
103		5195002050	SPIRAL SPRING	1			Y06172	
103-1		234220-6	SPIRAL SPRING	1	O	Y06172		
104		5255001040	DAMPER	1			Y06152	
104-1		424359-5	DAMPER	1	O	Y06152		
105		5225004020	HANDLE	1			Y06152	
105-1		424319-7	STARTER KNOB	1	O	Y06152		
106		6019519400	LABEL,MODEL	1			B1980	
106-1		809M35-4	HT-2249 D MODEL NO. LABEL	1	<	B1980		
107		0140049760	SCREW ASSEMBLY	4				
108		0150059780	TAPPING SCREW M5X20	3			Y06152	
108-1		266713-5	TAPPING SCREW 5X20	3	O	Y06152		
109		5195501500	BLOWER HOUSING	1				
110		0173089990	LOCK NUT	1			C3693	
110-1		931403-6	HEX. NUT M8	1	O	C3693		
111		0031008000	WASHER	1			C3693	
111-1		941202-8	FLAT WASHER 8	1	O	C3693		
112		5197003014	FLYWHEEL	1				
113		5191006000	CRANK CASE ASS'Y	1			B9114	
	D10		INC.114-119				B9114	
113-1		126755-0	CRANK CASE ASSEMBLY	1	O	B9114		
	D10		INC.114-119				B9114	
114		0440109980	OIL SEAL	1			Y06152	
114-1		213638-4	OIL SEAL	1	O	Y06152		
115		0140059520	SCREW M5X25	3			Y06152	
115-1		266701-2	PAN HEAD SCREW M5X25	3	O	Y06152	C6519	
115-2		922241-7	HEX. SOCKET HEAD BOLT M5X25	3	O	C6519		
116		0600109980	BALL BEARING 6000	1			Y06152	
116-1		210086-8	BALL BEARING 6000	1	O	Y06152		
117		0600109980	BALL BEARING 6000	1			Y06152	
117-1		210086-8	BALL BEARING 6000	1	O	Y06152		
118		5191500400	CRANKCASE GASKET	1			Y06152	
118-1		442174-5	CRANK CASE GASKET	1	O	Y06152		
119		0440109980	OIL SEAL	1			Y06152	
119-1		213638-4	OIL SEAL	1	O	Y06152		
120		5196500302	DAMPER	1			Y06152	
120-1		424104-8	DAMPER	1	O	Y06152		
121		5196500201	FUEL TANK PLATE	1				
122		0043605100	SCREW ASSEMBLY	1			C2147	
122-1		911208-0	PAN HEAD SCREW M5X10	1	O	C2147		
123		0851149950	TUBE COMPLETE	1				
124		0561059990	HOSE CLAMP	1			Y06152	
124-1		345920-4	HOSE CLAMP	1	O	Y06152		
125		5236503900	FILTER	1			Y06152	
125-1		163447-0	FUEL FILTER	1	O	Y06152	B3537	
125-2		163447-0	FUEL FILTER	1	O	B3537		
126		5196011000	FUEL TANK COMPLETE	1				
127		5256059000	FUEL TANK CAP COMPLETE	1			Y06152	
	D10		INC.128,129				Y06152	
127-1		168668-9	FUEL TANK CAP COMPLETE	1	O	Y06152		
	D10		INC.128,129				Y06152	
128		5256067000	STRAP	1			Y06152	
128-1		140436-2	STRAP COMPLETE	1	O	Y06152		

Interchange
O : Yes
X : No
< : the new part can be substituted for the current.
> : the current part can be substituted for the new.
S : Interchangeable as a set.

DE GERMANY**HT2249D / ENGINE HEDGE TRIMMER**

Item	Sub	Parts No.	Parts Description	Qty	I/C	E/C No.	Close No.	Remark
129		5256058000	FUEL TANK CAP	1			Y06152	
129-1		452920-8	FUEL TANK CAP	1	O	Y06152		
130		0150059830	TAPPING SCREW	2			Y06152	
130-1		266714-3	TAPPING SCREW 5X16	2	O	Y06152		
131		5103502801	SPACER GASKET	1			Y06152	
131-1		442177-9	GASKET AIR CLEANER	1	O	Y06152		
132		5256501900	CABLE BRACKET	1				
133		5103502801	SPACER GASKET	1			Y06152	
133-1		442177-9	GASKET AIR CLEANER	1	O	Y06152		
134		5196038000	CARBURETOR	1				
	D10		INC.135-149					
135		5316005120	RING	1			Y06152	
135-1		257964-1	STOP RING E-3	1	O	Y06152		
136		5236018040	SWIVEL	1			Y06152	
136-1		325922-6	SWIVEL	1	O	Y06152		
137		5206008030	PAN HEAD SCREW	2			Y06152	
137-1		266581-6	PAN HEAD SCREW M3X8 WITH W	2	O	Y06152	Y06995	
137-2		WJ00096364	SCREW M3X8 WITH WASHER	2	O	Y06995		
138		5246001010	O RING	1			Y06152	
138-1		213538-8	O RING 2	1	O	Y06152		
139		5256024020	JET	1				
140		5246001030	PUMP GASKET	1			Y06152	
140-1		442172-9	PUMP GASKET	1	O	Y06152		
141		5246001040	PUMP DIAPHRAGM	1			Y06152	
141-1		168575-6	PUMP DIAPHRAGM	1	O	Y06152	Y07366	
141-2		WJ00009599	PUMP DIAPHRAGM	1	O	Y07366		
142		5236046130	PUMP BODY ASS'Y	1			Y06152	
	D10		INC.143				Y06152	
142-1		140989-1	PUMP BODY ASSEMBLY	1	O	Y06152		
	D10		INC.143				Y06152	
143		5016004010	INLET SCREEN	1			Y06152	
143-1		352010-6	INLET SCREEN	1	O	Y06152	Y07179	
143-2		WJ00014070	INLET SCREEN	1	O	Y07179		
144		5236046040	METERING DIAPHRAGM GASKET	1			Y06152	
144-1		442154-1	METERING DIAPHRAGM GASKET	1	O	Y06152		
145		5316005250	METERING DIAPHRAGM ASS'Y	1			Y06152	
145-1		168767-7	METALING DIAPHRAGM	1	O	Y06152		
146		5236046060	AIR PURGE BODY ASS'Y	1			Y06152	
146-1		140988-3	AIR PURGE BODY ASSEMBLY	1	O	Y06152		
147		5246001150	PRIMER PUMP	1			Y06152	
147-1		424314-7	PRIMER PUMP	1	O	Y06152		
148		5236046050	PRIMER PUMP COVER	1			Y06152	
148-1		346270-0	PRIMER PUMP COVER	1	O	Y06152		
149		5236046010	PUMP COVER SCREW	4			Y06152	
149-1		266582-4	TAPPING SCREW 3X24	4	O	Y06152		
150		5236061000	O RING	1				
151		5253003020	AIR CLEANER HOUSING COMPLETE	1				
152		5203004010	AIR FILTER	1				
153		5253055010	AIR CLEANER COVER	1				
154		0043305600	SCREW ASS'Y M5X60(W/W)	2				
A01		060000022N	TOOL BAG	1			Y06898	
A01-1		XNR0000086	TOOL BAG	1	O	Y06898		
A02		060000015N	BOX WRENCH	1			Y06489	
A02-1		XNR0000080	BOX WRENCH 13X19	1	O	Y06489		
A03		302040600N	SPANNER 8X10	1			Y06489	
A03-1		XNR0000394	SPANNER 8X10	1	O	Y06489		
A04		099890100N	GOGGLE	1				

Interchange
O : Yes
X : No
< : the new part can be substituted for the current.
> : the current part can be substituted for the new.
S : Interchangeable as a set.