

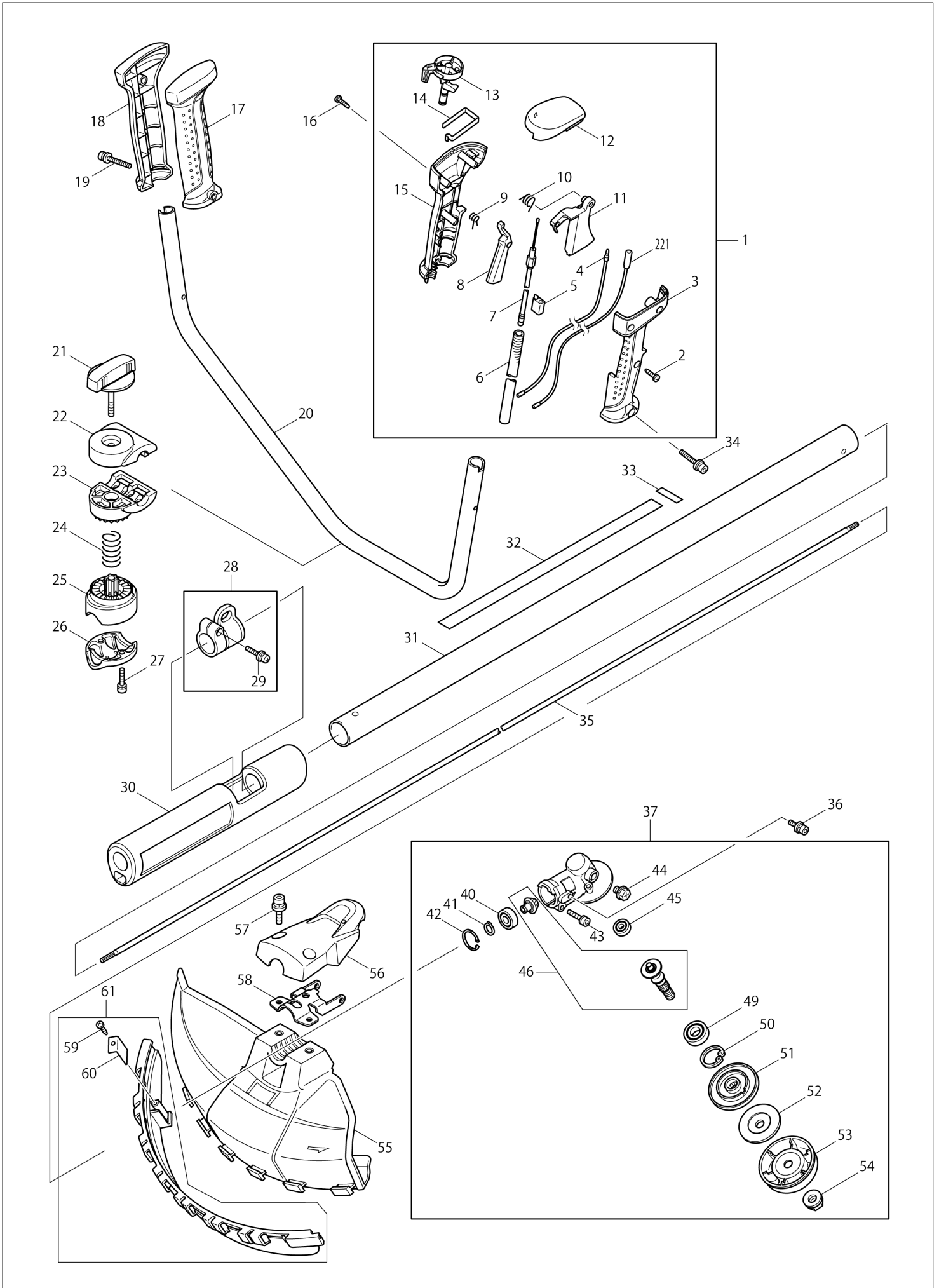


DE	GERMANY
----	---------

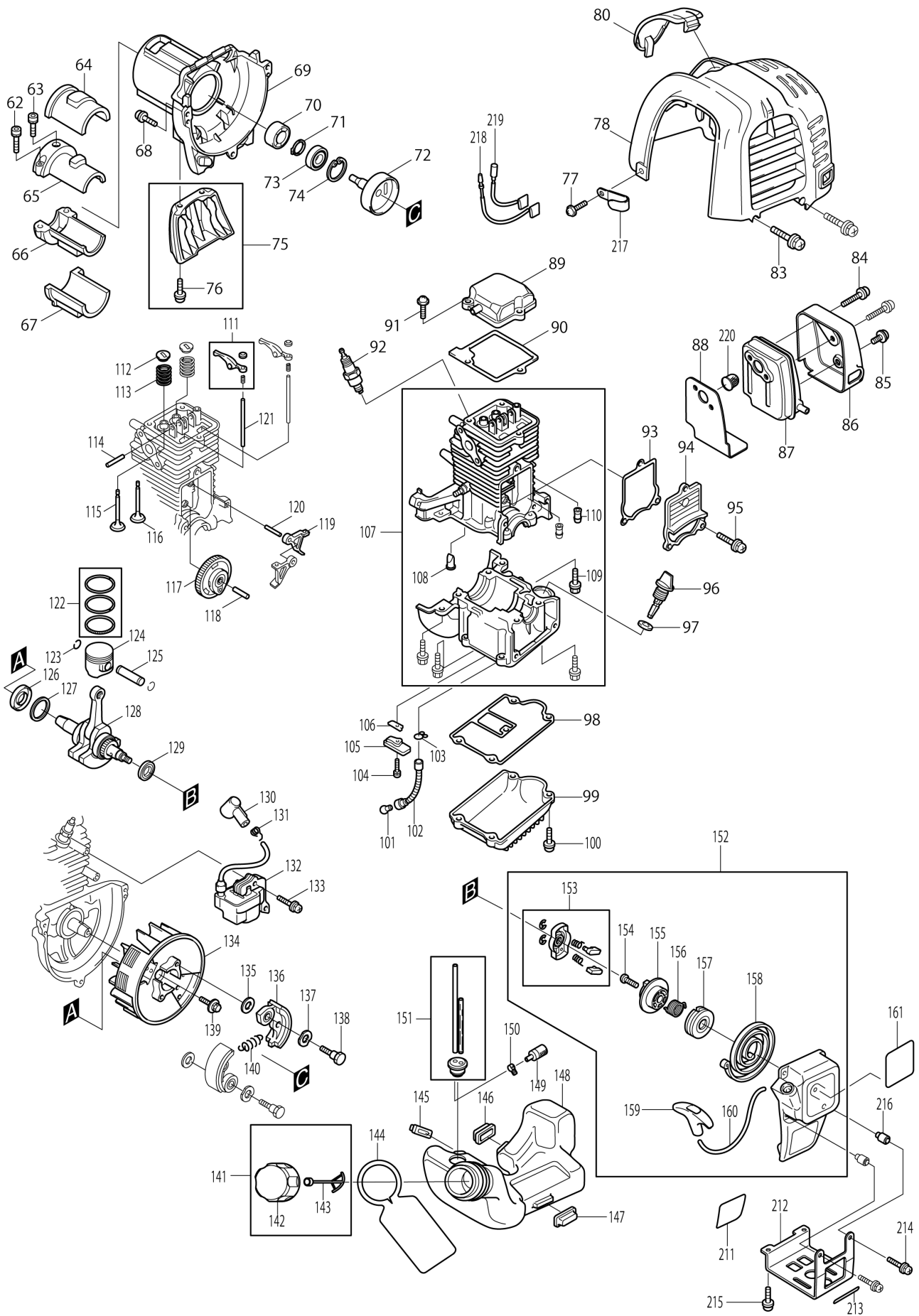
Diagram / Parts List

MS245.4UE
BRUSH CUTTER

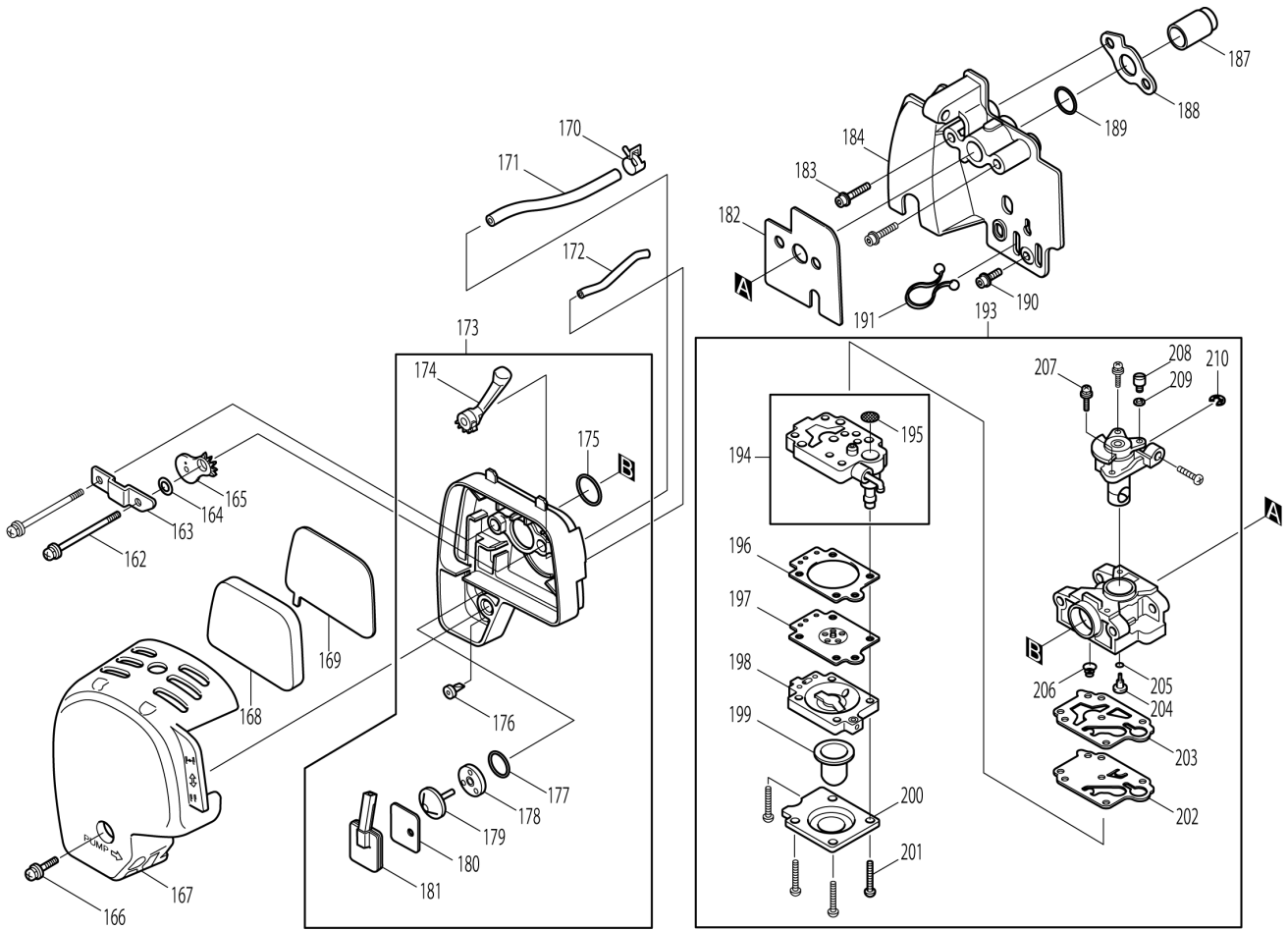
(DE) MS245.4UE / BRUSH CUTTER



(DE) MS245.4UE / BRUSH CUTTER



(DE) MS245.4UE / BRUSH CUTTER



DE	GERMANY
-----------	----------------

MS245.4UE / BRUSH CUTTER

Item	Sub	Parts No.	Parts Description	Qty	I/C	E/C No.	Close No.	Remark
001		125544-0	CONTROL LEVER ASSEMBLY	1				
	D10		INC. 2-15,221					
002		266326-2	TAPPING SCREW 4X18	3				
003		451094-2	LEVER CASE R	1			Y05557	
003-1		188656-0	LEVER CASE SET	1	S	Y05557	A5657	
	D10		INC. 15			Y05557	A5657	
003-2		183A10-9	LEVER CASE SET	1	S	A5657		
	D10		INC. 15			A5657		
004		638663-8	LEAD UNIT	1				
005		451081-1	CABLE HOLDER	1				
006		451213-0	CORRUGATE TUBE	1				
007		168527-7	CONTROL CABLE	1				
008		451083-7	LOCK OFF LEVER	1				
009		233541-3	TORSION SPRING 7	1				
010		233540-5	TORSION SPRING 11	1				
011		451084-5	THROTTLE LEVER	1				
012		451085-3	SWITCH COVER	1			A5657	
012-1		455722-1	SWITCH COVER	1	S	A5657		
013		451082-9	SWITCH LEVER	1				
014		232251-9	LEAF SPRING	1				
015		451093-4	LEVER CASE L	1			Y05557	
015-1		188656-0	LEVER CASE SET	1	S	Y05557	A5657	
	D10		INC. 3			Y05557	A5657	
015-2		183A10-9	LEVER CASE SET	1	S	A5657		
	D10		INC. 3			A5657		
016		266326-2	TAPPING SCREW 4X18	1				
017		451096-8	GRIP R	1			Y05557	
017-1		188659-4	GRIP SET	1	S	Y05557		
	D10		INC. 18			Y05557		
018		451095-0	GRIP L	1			Y05557	
018-1		188659-4	GRIP SET	1	S	Y05557		
	D10		INC. 17			Y05557		
019		922256-4	HEX. SOCKET HEAD BOLT M5X35	1				
020		331862-8	HANDLE 19	1				
021		168524-3	KNOB 57	1			96348	
021-1		168796-0	KNOB 57	1	<	96348		
022		318429-9	HANDLE CLAMP	1				
023		318428-1	HANDLE HOLDER	1				
024		233202-5	COMPRESSION SPRING 20	1				
025		318427-3	PIPE HOLDER	1				
026		318426-5	PIPE CLAMP	1				
027		922241-7	HEX. SOCKET HEAD BOLT M5X25	2				
028		195143-2	HANGER SET	1				
	D10		INC. 29					
029		911233-1	PAN HEAD SCREW M5X20	1				
030		422049-4	CUSHION	1			C0068	
030-1		422164-4	CUSHION D	1	O	C0068		
031		140041-5	SHAFT PIPE COMPLETE	1				
032		810519-9	CAUTION LABEL	1				
033		806904-2	SERIAL NO. LABEL	1			87422	
033-1		819760-1	DATE CODE LABEL	1	<	87422	96364	
033-2		814A82-0	DATE CODE LABEL	1	X	96364	97414	
033-3		801D19-4	SERIAL NO. LABEL	1	<	97414		
034		922256-4	HEX. SOCKET HEAD BOLT M5X35	1				
035		324893-4	SHAFT	1			B9070	
035-1		327056-1	SHAFT	1	O	B9070		
036		922218-2	H.S.H.BOLT M5X14 WITH WR	2			B2856	
036-1		922206-9	HEX. SOCKET HEAD BOLT M5X10	2	>	B2856		
037		125556-3	GEAR CASE ASSEMBLY	1			B9682	
	D10		INC. 40-46,49-54				B9682	
037-1		123833-7	GEAR CASE ASSEMBLY	1	S	B9682	DD915	
	D10		INC. 40-42,44-46,49-54			B9682	DD915	
037-2		123833-7	GEAR CASE ASSEMBLY	1	O	DD915		
	D10		INC. 40-42,44-46,49-54			DD915		
040		210049-4	BALL BEARING 609ZZ	1			B9682	

Interchange
O : Yes
X : No
< : the new part can be substituted for the current.
> : the current part can be substituted for the new.
S : Interchangeable as a set.

MS245.4UE / BRUSH CUTTER

Item	Sub	Parts No.	Parts Description	Qty	I/C	E/C No.	Close No.	Remark
040-1		210157-1	BALL BEARING 609ZZ	1	O	B9682		
041		961005-4	RETAINING RING S-9	1			B9682	
041-1		257986-1	RETAINING RING (EXT) S-9	1	O	B9682		
042		962103-7	RETAINING RING R-24	1			B9682	
042-1		257987-9	RETAINING RING (INT)R-24	1	O	B9682		
043		922241-7	HEX. SOCKET HEAD BOLT M5X25	1				
044		265590-2	+HEX.BOLT M8X10 WITH R	1				
045		211019-6	BALL BEARING 626	1			87587	
046		188866-9	CUTTER SHAFT SET	1			87587	
046-1		188902-1	CUTTER SHAFT SET	1	S	87587	A4930	
046-2		183A00-2	CUTTER SHAFT SET	1	O	A4930	B9682	
046-3		183K10-9	CUTTER SHAFT SET	1	O	B9682		
049		210115-7	BALL BEARING 6001LLU	1				
050		962106-1	RETAINING RING R-28	1			B9682	
050-1		257407-3	RETAINING RING (INT)R-28	1	O	B9682		
051		331861-0	RECEIVE WASHER	1			B9682	
051-1		326821-5	RECEIVE WASHER	1	O	B9682		
052		346084-7	CLAMP WASHER	1				
053		168526-9	CUP	1				
054		264025-0	HEX. NUT M10-17	1				
055		451098-4	PROTECTOR	1			88011	
055-1		452260-4	PROTECTOR	1	S	88011		
056		451097-6	PROTECTOR COVER	1			B2856	
057		922353-6	HEX.SOCKET HEAD BOLT M6X30	2			87170	
057-1		266579-3	HEX SOCKET HEAD BOLT M6X30	2	<	87170	B2856	
057-2		266280-0	HEX. SOCKET HEAD BOLT M6X25	2	>	B2856		
058		346073-2	PROTECTOR CLAMP	1			B2856	
058-1		347012-5	PROTECTOR CLAMP 24	1	S	B2856		
059		266326-2	TAPPING SCREW 4X18	1				
060		346074-0	CUTTER	1			B2856	
060-1		347050-7	CUTTER	1	<	B2856		
061		135361-0	PROTECTOR EXTENSION ASSY	1			88011	
	D10		INC. 59,60				88011	
061-1		135398-7	PROTECTOR EXTENSION ASSY	1	S	88011	B2856	
	D10		INC. 59,60			88011	B2856	
061-2		135753-3	PROTECTOR EXTENSION ASSY	1	<	B2856		
	D10		INC. 59,60			B2856		
062		922226-3	HEX. SOCKET HEAD BOLT M5X18	2				
063		922211-6	H.S.H.BOLT M5X12 WITH W	1				
064		424191-7	PIPE DAMPER 1	1				
065		318270-0	PIPE BRACKET 1	1				
066		318271-8	PIPE BRACKET 2	1				
067		424107-2	PIPE DAMPER 2	1				
068		265191-6	PAN HEAD SCREW M5X18	3			85939	
068-1		922222-1	HEX. SOCKET HEAD BOLT M5X16	3	X	85939		
069		318329-3	CLUTCH CASE	1				
070		450569-8	SPACER	1			A1812	
070-1		450569-8	SPACER	1	O	A1812		
071		961052-5	RETAINING RING (EXT) S-12	1				
072		168475-0	CLUTCH DRUM	1			99822	
072-1		168809-7	CLUTCH DRUM COMPLETE	1	O	99822	B9070	
072-2		168809-7	CLUTCH DRUM COMPLETE	1	O	B9070		
073		210111-5	BALL BEARING 6201LLU	1			Y05608	
073-1		210111-5	BALL BEARING 6201LLU	1	O	Y05608		
074		962151-6	RETAINING RING R-32	1				
075		195144-0	STAND SET	1				
	D10		INC. 76					
076		911218-7	PAN HEAD SCREW M5X14	2				
077		265187-7	PAN HEAD SCREW M5X12	2			87326	
077-1		911213-7	PAN HEAD SCREW M5X12	2	O	87326		
078		451261-9	CYLINDER COVER	1				
080		450568-0	PLUG COVER	1			95539	
080-1		452144-6	PLUG COVER	1	O	95539		
083		265189-3	PAN HEAD SCREW M4X16	2			87326	
083-1		911128-8	P.H.SCREW M4X16 WITH WR	2	O	87326		

Interchange
O : Yes
X : No
< : the new part can be substituted for the current.
> : the current part can be substituted for the new.
S : Interchangeable as a set.

DE	GERMANY
-----------	----------------

MS245.4UE / BRUSH CUTTER

Item	Sub	Parts No.	Parts Description	Qty	I/C	E/C No.	Close No.	Remark
084		266440-4	HEX SOCKET HEAD BOLT M5X40	2				
085		265184-3	+TRUSS HEAD SCREW M5X5	1				
086		345915-7	MUFFLER COVER	1				
087		168469-5	EXHAUST MUFFLER	1				
088		345916-5	MUFFLER GASKET	1				
089		140023-7	ROCKER COVER COMPLETE	1			C2837	
089-1		140B46-7	ROCKER COVER COMPLETE	1	<	C2837		
090		162275-0	ROCKER COVER GASKET	1				
091		266494-1	+ PAN HEAD SCREW M5X16	3			85939	
091-1		922223-9	H.S.H.BOLT M5X16 WITH WR	3	X	85939		
092		168534-0	SPARK PLUG	1				
093		162274-2	CAM GEAR COVER GASKET	1				
094		318443-5	CAM GEAR COVER	1				
095		911218-7	PAN HEAD SCREW M5X14	3			85939	
095-1		266495-9	HEX.SOCKET HEAD BOLT M5X14	3	X	85939	88450	
095-2		922217-4	HEX. SOCKET HEAD BOLT M5X14	3	O	88450		
096		450565-6	OIL GAUGE	1				
097		424100-6	GASKET	1				
098		162276-8	CASE GASKET	1				
099		318442-7	OIL CASE	1				
100		265186-9	PAN HEAD SCREW M5X18	4			85939	
100-1		266495-9	HEX.SOCKET HEAD BOLT M5X14	4	X	85939	88450	
100-2		922217-4	HEX. SOCKET HEAD BOLT M5X14	4	O	88450		
101		325666-8	OIL WEIGHT	1				
102		424202-8	OIL TUBE	1				
103		282020-8	HOSE CLAMP	1				
104		266493-3	HEX.SOCKET HEAD BOLT M4X10	1			87326	
104-1		922111-0	HEX. SOCKET HEAD BOLT M4X10	1	O	87326	91157	
104-2		922112-8	HEX. SOCKET HEAD BOLT M4X10	1	O	91157		
105		318440-1	RETAINER PLATE	1				
106		346083-9	LEAD VALVE	1				
107		135375-9	CYLINDER BLOCK ASSEMBLY	1				
	D10		INC. 108-110					
108		424201-0	CHECK VALVE	2				
109		266495-9	HEX.SOCKET HEAD BOLT M5X14	8			88450	
109-1		922217-4	HEX. SOCKET HEAD BOLT M5X14	8	O	88450		
110		424200-2	SPACER	2				
111		125554-7	ROCKER ARM ASSEMBLY	2				
112		325668-4	SPRING RETAINER	2				
113		234108-0	COMPRESSION SPRING 9	2				
114		256200-2	PIN 5	1				
115		325670-7	INTAKE VALVE	1			A2770	
115-1		326367-1	INTAKE VALVE	1	O	A2770		
116		325669-2	EXHAUST VALVE	1			A2770	
116-1		326366-3	EXHAUST VALVE	1	O	A2770		
117		125552-1	CAM GEAR ASSEMBLY	1				
118		268238-5	PIN 5	1				
119		313169-4	CAM LIFTER	2				
120		268239-3	PIN 4	1				
121		256865-0	ROD 2.5	2				
122		195145-8	PISTON RING SET	1			A2770	
122-1		196595-0	PISTON RING SET	1	O	A2770		
123		233976-8	CLIP	2				
124		318441-9	PISTON	1			A9068	
124-1		197453-3	PISTON SET	1	<	A9068		
	C10	318441-9	PISTON	1		A9068		
	D10		INC. 122,123			A9068		
125		257781-9	PISTON PIN	1				
126		213147-3	OIL SEAL 12	1			B2951	
126-1		213089-1	OIL SEAL 12	1	<	B2951		
127		267400-9	FLAT WASHER 23	1				
128		135374-1	CRANKSHAFT ASSEMBLY	1			Y06314	
128-1		135539-5	CRANKSHAFT ASSEMBLY	1	O	Y06314		
129		213148-1	OIL SEAL 10	1			B2951	
129-1		213769-9	OIL SEAL 10	1	<	B2951		

Interchange
O : Yes
X : No
< : the new part can be substituted for the current.
> : the current part can be substituted for the new.
S : Interchangeable as a set.

MS245.4UE / BRUSH CUTTER

Item	Sub	Parts No.	Parts Description	Qty	I/C	E/C No.	Close No.	Remark
130		424105-6	PLUG CAP	1				
131		324891-8	PLUG CAP SPRING	1				
132		168501-5	IGNITION COIL	1			B1493	
132-1		168816-0	IGNITION COIL	1	S	B1493		
133		911139-3	PAN HEAD SCREW M4X20 WG	2			85939	
133-1		922138-0	H.S.H.BOLT M4X20 WITH WR	2	X	85939		
134		318343-9	FLYWHEEL	1			B1493	
134-1		319012-5	FLYWHEEL	1	O	B1493		
135		267812-6	WASHER 6	2				
136		168498-8	CLUTCH SHOE	2			A6620	
136-1		161332-1	CLUTCH SHOE	2	O	A6620		
137		267817-6	WASHER 8	2				
138		266457-7	SHOULDER HEX. BOLT M6X25	2			98135	
138-1		266864-4	SHOULDER HEX. BOLT M6X25	2	O	98135		
139		265577-4	HEX HEAD BOLT M6X16	1				
140		231858-8	TENSION SPRING 6	1			Y06373	
140-1		231881-3	TENSION SPRING 7	1	<	Y06373		
141		125472-9	FUEL TANK CAP ASSEMBLY	1			C4429	
	D10		INC. 142,143				C4429	
141-1		127108-6	FUEL TANK CAP ASSEMBLY	1	O	C4429		
	D10		INC. 142,143			C4429		
142		140435-4	FUEL TANK CAP	1			C4429	
142-1		127109-4	FUEL TANK CAP ASSEMBLY	1	O	C4429		
143		140436-2	STRAP COMPLETE	1				
144		810455-9	CAUTION PLATE	1				
145		424102-2	PLATE	1				
146		424103-0	PLATE	1				
147		424104-8	DAMPER	1				
148		450566-4	FUEL TANK	1				
149		163447-0	FUEL FILTER	1			B3537	
149-1		163447-0	FUEL FILTER	1	O	B3537		
150		345920-4	HOSE CLAMP	1				
151		168472-6	TUBE COMPLETE	1				
152		195147-4	RECOIL STARTER SET	1				
	D10		INC. 153-160					
153		168471-8	PULLEY	1				
154		266585-8	TAPPING SCREW 5X12	1				
155		451940-9	CAM PLATE	1				
156		233984-9	DAMPER SPRING	1			C0768	
156-1		233578-0	DAMPER SPRING	1	O	C0768		
157		451939-4	REEL	1				
158		232258-5	SPIRAL SPRING	1				
159		424319-7	STARTER KNOB	1				
160		444020-8	STARTER ROPE	1				
161		808739-7	MS-245.4UE MODEL NO. LABEL	1				
162		265188-5	+PAN HEAD SCREW M5X68	2				
163		345919-9	PLATE	1				
164		423376-2	GASKET	1				
165		450560-6	CHOKE PLATE	1				
166		911218-7	PAN HEAD SCREW M5X14	1				
167		450561-4	AIR CLEANER COVER	1				
168		443141-3	AIR CLEANER ELEMENT	1				
169		443140-5	AIR CLEANER ELEMENT	1				
170		345918-1	HOSE CLAMP	1				
171		422041-0	BREATHING PIPE	1				
172		422042-8	PIPE	1				
173		125468-0	CLEANER PLATE ASSEMBLY	1			B8647	
	C10	140814-6	AIR CLEANER PLATE COMPLETE	1		89444	B8647	
	D10		INC. 173-181				B8647	
173-1		123845-0	CLEANER PLATE ASSEMBLY	1	O	B8647		
	C10	140814-6	AIR CLEANER PLATE COMPLETE	1		B8647	B8647	
	C11	455407-9	AIR CLEANER PLATE	1	X	B8647		
	D10		INC. 173-181			B8647		
174		451925-5	CHOKE LEVER	1			B8647	
174-1		457241-3	CHOKE LEVER	1	X	B8647		

Interchange
O : Yes
X : No
< : the new part can be substituted for the current.
> : the current part can be substituted for the new.
S : Interchangeable as a set.

MS245.4UE / BRUSH CUTTER

Item	Sub	Parts No.	Parts Description	Qty	I/C	E/C No.	Close No.	Remark
175		213540-1	O RING 15	1			B8647	
175-1		213094-8	O RING 15	1	X	B8647		
176		424316-3	CHECK VALVE	1			B8647	
176-1		424938-9	CHECK VALVE	1	X	B8647		
177		213539-6	O RING 14	1			B8647	
177-1		213093-0	O RING 14	1	X	B8647		
178		451924-7	CHECK VALVE PLATE	1			B8647	
178-1		457240-5	CHECK VALVE PLATE	1	X	B8647		
179		424315-5	CHECK VALVE	1			B8647	
179-1		424937-1	CHECK VALVE	1	X	B8647		
180		168577-2	SEPARATOR GASKET	1			B8647	
180-1		161572-1	SEPARATOR GASKET	1	X	B8647		
181		168576-4	SEPARATOR PLATE	1			B8647	
181-1		161571-3	SEPARATOR PLATE	1	X	B8647		
182		413121-3	CARBURETOR GASKET	1				
183		922228-9	H.S.H.BOLT M5X18 WITH WR	2				
184		450559-1	INSULATOR	1				
187		324961-3	INTAKE PIPE	1				
188		413120-5	INSULATOR GASKET	1				
189		213078-6	O-RING 10	1				
190		922213-2	H.S.H.BOLT M5X12 WITH WR	1				
191		450562-2	CLAMP	1				
193		168497-0	CARBURETOR	1				
	D10		INC. 194,196-210					
194		140437-0	PUMP BODY	1				
	D10		INC. 195					
195		352010-6	INLET SCREEN	1			Y07179	
195-1		WJ00014070	INLET SCREEN	1	O	Y07179		
196		442154-1	METERING DIAPHRAGM GASKET	1				
197		168574-8	METERING DIAPHRAGM	1			Y07577	
197-1		WJ00963279	SCREW	1	O	Y07577	Y07595	
197-2		WJ00095586	DIAPHRAGM ASS'Y	1	X	Y07595		
198		140438-8	AIR PURGE BODY	1				
199		424314-7	PRIMER PUMP	1				
200		346270-0	PRIMER PUMP COVER	1				
201		266582-4	TAPPING SCREW 3X24	4				
202		168575-6	PUMP DIAPHRAGM	1			Y07366	
202-1		WJ00009599	PUMP DIAPHRAGM	1	O	Y07366		
203		442155-9	PUMP GASKET	1				
204		325924-2	JET	1				
205		213538-8	O RING 2	1				
206		234183-6	CONICAL COMPRESSION SPRING 5-9	1				
207		266581-6	PAN HEAD SCREW M3X8 WITH W	2			Y06995	
207-1		WJ00096364	SCREW M3X8 WITH WASHER	2	O	Y06995		
208		325922-6	SWIVEL	1				
209		413140-9	WASHER	1				
210		257964-1	STOP RING E-3	1				
211		806902-6	GAS EMISSION APPROVAL LABEL	1			Y06356	
211-1		806902-6	GAS EMISSION APPROVAL LABEL	1	O	Y06356	Y07655	
212		345964-4	TANK GUARD	1				
213		806903-4	SERIAL NO. LABEL	1			87422	
213-1		814998-3	SERIAL LABEL	1	<	87422		
214		911148-2	PAN HEAD SCREW M4X25	2				
215		265187-7	PAN HEAD SCREW M5X12	2			87326	
215-1		911213-7	PAN HEAD SCREW M5X12	2	O	87326		
216		331835-1	SPACER	2				
217		345963-6	CLAMP	1				
218		638664-6	LEAD UNIT	1			B1493	
218-1		632E38-3	LEAD UNIT	1	S	B1493		
219		638665-4	LEAD UNIT	1			B1493	
219-1		632E39-1	LEAD UNIT	1	S	B1493		
220		324980-9	SPARK ARRESTER	1				
221		638671-9	LEAD UNIT	1				
222		413143-3	WASHER	2		87170		
A01		122855-4	BAND ASSEMBLY	1			86980	

Interchange
O : Yes
X : No
< : the new part can be substituted for the current.
> : the current part can be substituted for the new.
S : Interchangeable as a set.

