



Ersatzteilliste Spare Parts List

2019-06

TM9214 (2015-2017)

TM9214H (2015-2018)

TM9214_H (D, GB)



| Seite / Page | Pos. | TM9214 (2015-2017) | TM9214H (2015-2018) | Teil-Nr. Part No. | Hinweise Notes | Bezeichnung | Spezifikation Specification | Description |
|--------------|------|--------------------|---------------------|----------------------|-------------------|-----------------------|--------------------------------|----------------------|
| 1 | 4 | 1 | 1 | 664999243 | | KONSOLENHALTER LINKS | | SUPPORT |
| 1 | 5 | 1 | 1 | 664785245 | | KONSOLENHALTER RECHTS | | SUPPORT |
| 1 | 6 | 4 | 4 | 664818690 | => 2017 | SCHRAUBE | | SCREW |
| 1 | 6 | 4 | 4 | 664082016 | 2018 => | SCHRAUBE | | SCREW |
| 1 | 7 | 4 | 4 | 664293201 | | MUTTER | | NUT |
| 1 | 8 | 1 | 1 | 664028497 | | KONSOLE HINTERRAD | | REAR DASHBOARD SUPP |
| 1 | 9 | 4 | 4 | 664735110 | | SCHRAUBE | | SCREW |
| 1 | 10 | 1 | 1 | 664785255 | | HALTER | | SUPPORT |
| 1 | 11 | 2 | 2 | 664735110 | | SCHRAUBE | | SCREW |
| 1 | 12 | 4 | 4 | 664815200 | | SCHRAUBE | | SCREW |
| 1 | 13 | 4 | 4 | 664292102 | | MUTTER | | NUT |
| 1 | 14 | 1 | 1 | 664785241 | | HALTER | | SUPPORT |
| 1 | 15 | 2 | 2 | 664815200 | => 2017 | SCHRAUBE | | SCREW |
| 1 | 15 | 2 | 2 | 664351221 | 2018 => | SCHRAUBE | | SCREW |
| 1 | 16 | 2 | 2 | 664292102 | | MUTTER | | NUT |
| 1 | 17 | 2 | 2 | 664785153 | | KONSOLE VORDERRAD | | FRONT DASHBOARD SUPP |
| 1 | 18 | 2 | 2 | 664815200 | | SCHRAUBE | | SCREW |
| 1 | 19 | 2 | 2 | 664292102 | | MUTTER | | NUT |
| 1 | 20 | 2 | 2 | 664793102 | | SCHRAUBE | | SCREW |
| 1 | 21 | 1 | 1 | 664028498 | | HALTER | | SUPPORT |
| 1 | 22 | 2 | 2 | 664293201 | | MUTTER | | NUT |
| 1 | 31 | 2 | 2 | 664028499 | | SITZHALTER | | SUPPORT |
| 1 | 32 | 8 | 8 | 664815200 | | SCHRAUBE | | SCREW |
| 1 | 33 | 8 | 8 | 664292102 | | MUTTER | | NUT |
| 1 | 34 | 2 | 2 | 664785257 | | SITZHALTER | | SUPPORT |
| 1 | 35 | 8 | 8 | 664818690 | => 2017 | SCHRAUBE | | SCREW |
| 1 | 35 | 8 | 8 | 664082016 | 2018 => | SCHRAUBE | | SCREW |
| 1 | 36 | 8 | 8 | 664293201 | | MUTTER | | NUT |
| 1 | 37 | 2 | 2 | 664755039 | | WINKEL | | BRACKET |
| 1 | 38 | 4 | 4 | 664792611 | | SCHRAUBE | | SCREW |
| 1 | 39 | 4 | 4 | 664293201 | | MUTTER | | NUT |
| 1 | 40 | 2 | 2 | 664524970 | | BOLZEN | | PIN |
| 1 | 41 | 2 | 2 | 664155010 | | MUTTER | | NUT |
| 1 | 42 | 1 | 1 | 664755043 | | WINKEL | | BRACKET |
| 1 | 43 | 1 | 1 | 664430253 | | FEDER | | SPRING |
| 1 | 44 | 2 | 2 | 664789000 | | SCHRAUBE | | SCREW |
| 1 | 45 | 2 | 2 | 664154330 | | MUTTER | | NUT |
| 1 | 46 | 2 | 2 | 664430257 | | FEDER | | SPRING |
| 1 | 47 | 2 | 2 | 664523070 | | SCHEIBE | | WASHER |
| 1 | 48 | 2 | 2 | 664760515 | | SCHRAUBE | | SCREW |
| 1 | 49 | 2 | 2 | 664671653 | | SCHEIBE | | WASHER |
| 1 | 50 | 2 | 2 | 664360425 | | MUTTER | | NUT |

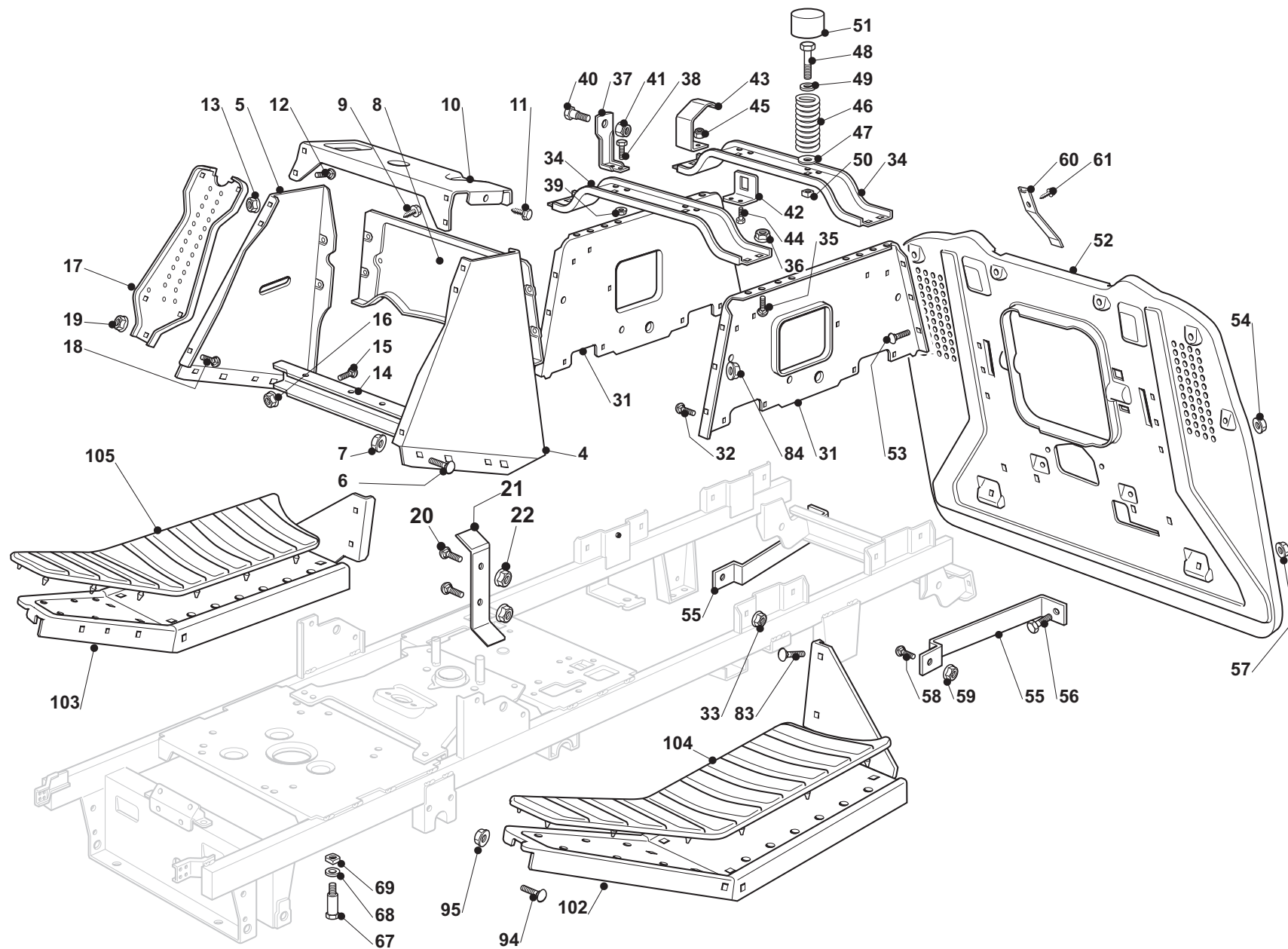
TM9214 (2015-2017),
TM9214H (2015-2018)

1

RAHMENSATZ
CHASSIS

Makita

DOLMAR



TM9214 (2015-2017),
TM9214H (2015-2018)

1

RAHMENSATZ
CHASSIS

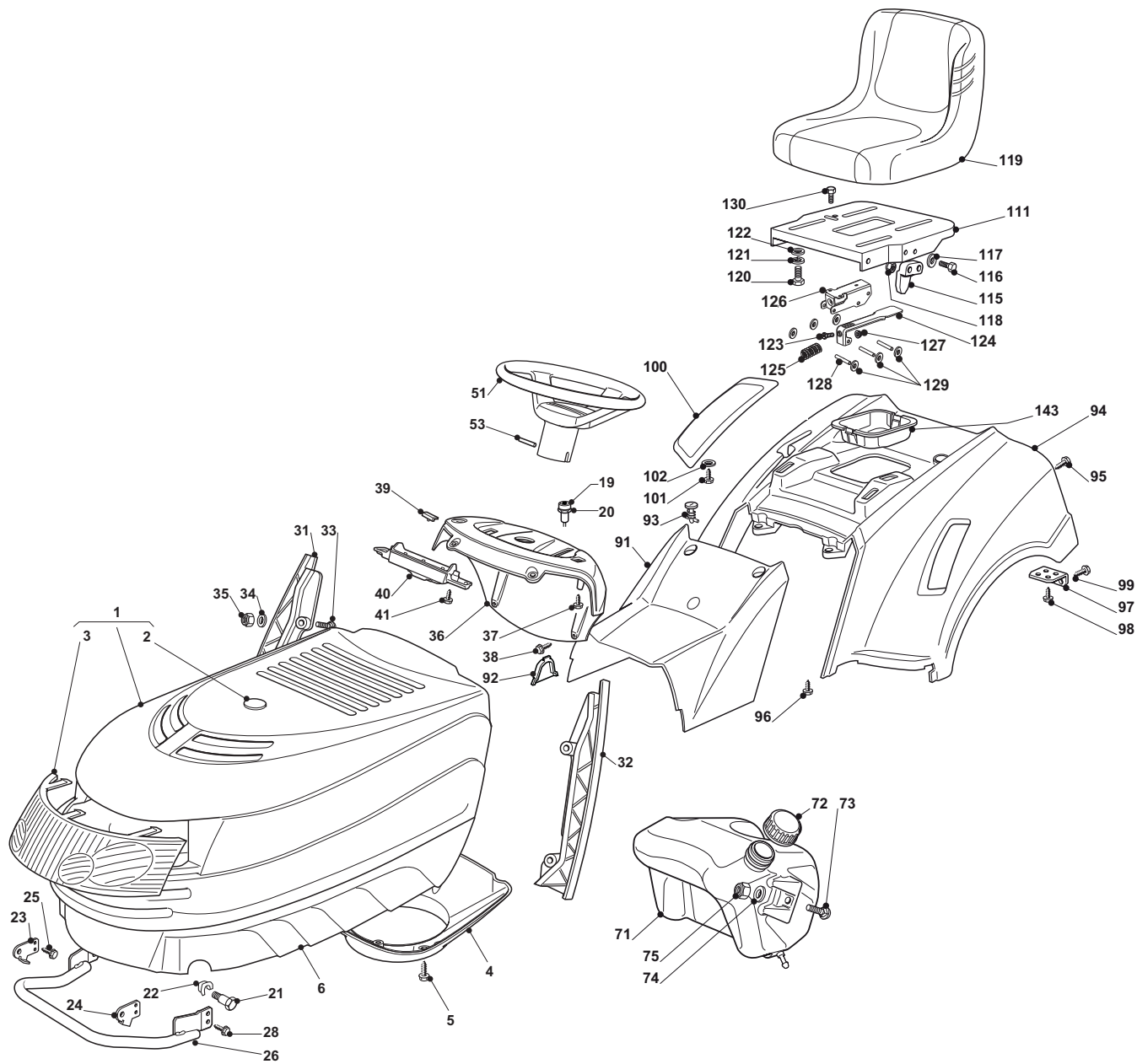


| Seite / Page | Pos. | TM9214 (2015-2017) | TM9214H (2015-2018) | Teil-Nr. Part No. | Hinweise Notes | Bezeichnung | Spezifikation Specification | Description |
|--------------|------|--------------------|---------------------|----------------------|-------------------|------------------------|--------------------------------|-----------------------|
| 1 | 51 | 2 | 2 | 664122000 | | SCHUTZKAPPE | | HOOD |
| 1 | 52 | 1 | 1 | 664947041 | | PLATTE | | PLATE |
| 1 | 53 | 6 | 6 | 664792611 | | SCHRAUBE | | SCREW |
| 1 | 54 | 6 | 6 | 664293201 | | MUTTER | | NUT |
| 1 | 55 | 2 | 2 | 664650119 | | PLATTE | | PLATE |
| 1 | 56 | 2 | 2 | 664792611 | | SCHRAUBE | | SCREW |
| 1 | 57 | 2 | 2 | 664293201 | | MUTTER | | NUT |
| 1 | 58 | 2 | 2 | 664792611 | | SCHRAUBE | | SCREW |
| 1 | 59 | 2 | 2 | 664293201 | | MUTTER | | NUT |
| 1 | 60 | 1 | 1 | 664028500 | | FEDER | | SPRING |
| 1 | 61 | 1 | 1 | 664735110 | | SCHRAUBE | | SCREW |
| 1 | 67 | 2 | | 664580030 | | RIEMENFÜHRUNG | | BELT GUIDE |
| 1 | 68 | 2 | 2 | 664523060 | | SCHEIBE | | WASHER |
| 1 | 69 | 2 | 2 | 664360425 | | MUTTER | | NUT |
| 1 | 83 | 4 | 4 | 664792611 | | SCHRAUBE | | SCREW |
| 1 | 84 | 4 | 4 | 664293201 | | MUTTER | | NUT |
| 1 | 94 | 4 | 4 | 664815200 | | SCHRAUBE | | SCREW |
| 1 | 95 | 4 | 4 | 664292102 | | MUTTER | | NUT |
| 1 | 102 | 1 | 1 | 664251008 | | FUSSBRETTHALTER LINKS | | FOOTBOARD SUPPORT |
| 1 | 103 | 1 | 1 | 664510081 | | FUSSBRETTHALTER RECHTS | | FOOTBOARD SUPPORT |
| 1 | 104 | 1 | 1 | 664110327 | | FUSSBRETTDECKEL RECHTS | | RIGHT FOOTBOARD COVER |
| 1 | 105 | 1 | 1 | 664110326 | | FUSSBRETTDECKEL LINKS | | LEFT FOOTBOARD COVER |

TM9214 (2015-2017),
TM9214H (2015-2018)

2

KARROSSERIE
BODY



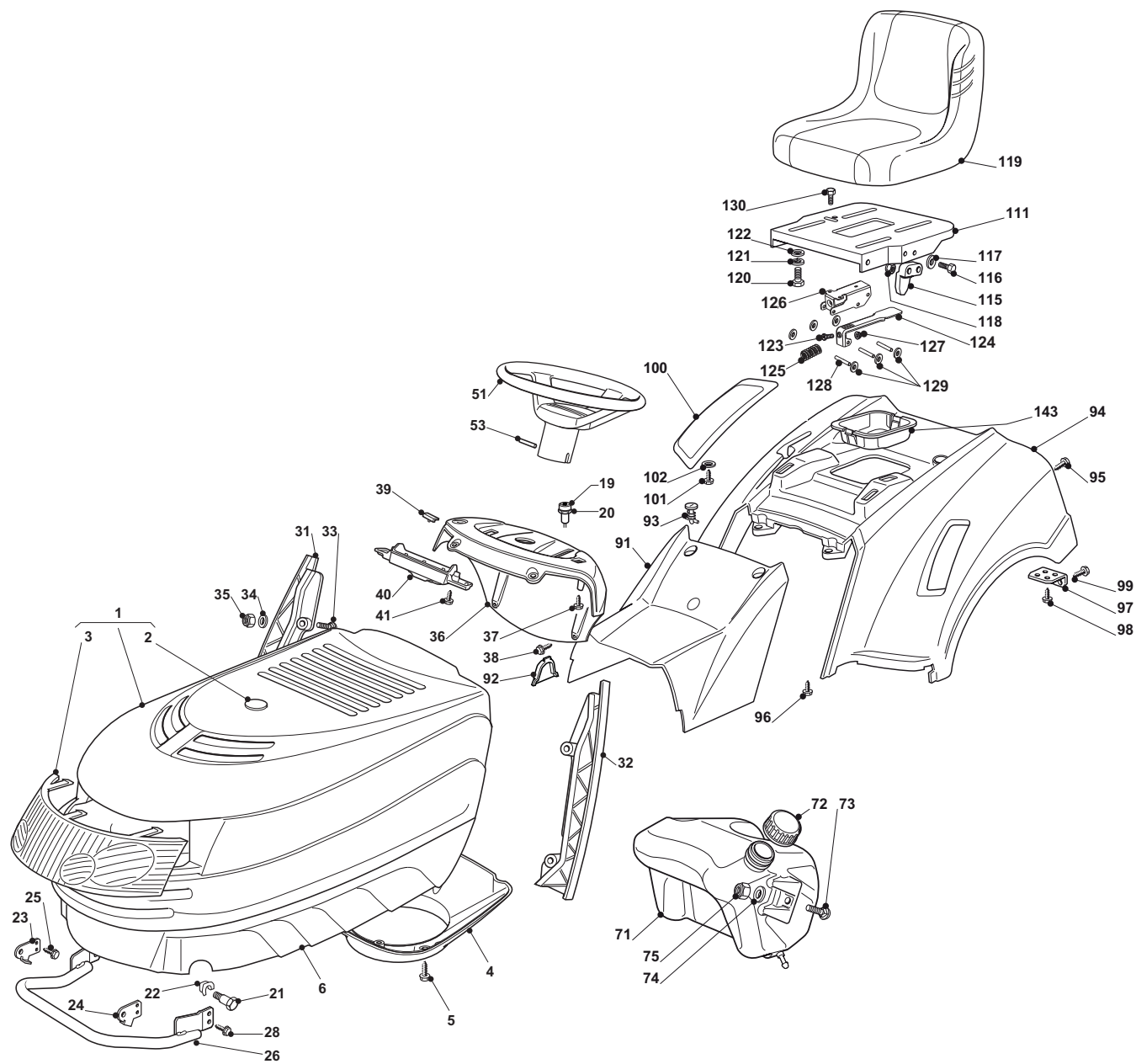


| Seite / Page | Pos. | TM9214 (2015-2017) | TM9214H (2015-2018) | Teil-Nr. Part No. | Hinweise Notes | Bezeichnung | Spezifikation Specification | Description |
|--------------|------|--------------------|---------------------|----------------------|-------------------|------------------------|--------------------------------|-----------------------|
| 2 | 1 | 1 | 1 | 664076938 | | OBERHAUBE | INC. 2,3 | HOOD |
| 2 | 2 | 1 | 1 | 664547103 | | PLATTE | | PLATE |
| 2 | 3 | 1 | 1 | 664410859 | | FRONTTEIL | | GRILL |
| 2 | 4 | 1 | 1 | 664108028 | | ABDECKUNG | | COVER |
| 2 | 5 | 3 | 3 | 664728686 | | SCHRAUBE | | SCREW |
| 2 | 6 | 1 | 1 | 664076808 | | UNTERHAUBE | | HOOD |
| 2 | 19 | 1 | 1 | 664028501 | | KNOPF | | BUTTON |
| 2 | 20 | 1 | 1 | 664028502 | | NUTMUTTER | | RING NUT |
| 2 | 21 | 2 | 2 | 664510023 | | BOLZEN | | PIN |
| 2 | 22 | 2 | 2 | 664436050 | | PLATTE | | PLATE |
| 2 | 23 | 1 | 1 | 664547089 | | PLATTE RECHTS | | PLATE |
| 2 | 24 | 1 | 1 | 664547091 | | PLATTE LINKS | | PLATE |
| 2 | 25 | 4 | 4 | 664731580 | | SCHRAUBE | | SCREW |
| 2 | 26 | 1 | 1 | 664028503 | | AUSPUFFSCHUTZ | | MUFFLER PROTECTION |
| 2 | 28 | 4 | 4 | 664735120 | | SCHRAUBE | | SCREW |
| 2 | 31 | 1 | 1 | 664028504 | | RECHTER KONSOLENHALTER | | RIGHT DASHBOARD SUPP. |
| 2 | 32 | 1 | 1 | 664028505 | | LINKER KONSOLENHALTER | | LEFT DASHBOARD SUPP. |
| 2 | 33 | 4 | 4 | 664815221 | | SCHRAUBE | | SCREW |
| 2 | 34 | 4 | 4 | 664521330 | | SCHEIBE | | WASHER |
| 2 | 35 | 4 | 4 | 664154510 | | MUTTER | | NUT |
| 2 | 36 | 1 | 1 | 664028506 | | KONSOLE | | DASHBOARD |
| 2 | 37 | 2 | 2 | 664728440 | | SCHRAUBE | | SCREW |
| 2 | 38 | 2 | 2 | 664735402 | | SCHRAUBE | | SCREW |
| 2 | 39 | 2 | 2 | 664260000 | | GUMMISTOPFEN | | GROMMET |
| 2 | 40 | 1 | 1 | 664600074 | | SCHUTZ | | PROTECTION |
| 2 | 41 | 2 | 2 | 664735402 | | SCHRAUBE | | SCREW |
| 2 | 51 | 1 | 1 | 664961216 | | LENKRAD | | STEERING WHEEL |
| 2 | 53 | 1 | 1 | 664620300 | => 2017 | STIFT | | PIN |
| 2 | 53 | 1 | 1 | 664620250 | 2018 => | STIFT | | PIN |
| 2 | 71 | 1 | 1 | 664735128 | | TANK | | TANK |
| 2 | 72 | 1 | 1 | 664795000 | | TANKVERSCHLUSS | | CAP |
| 2 | 73 | 2 | 2 | 664815210 | | SCHRAUBE | | SCREW |
| 2 | 74 | 2 | 2 | 664160039 | | DISTANZSTÜCK | | SPACER |
| 2 | 75 | 2 | 2 | 664154510 | | MUTTER | | NUT |
| 2 | 91 | 1 | 1 | 664110378 | | ABDECKUNG, ROT | | COVER, RED |
| 2 | 92 | 1 | | 664207172 | | PLATTE | | PLATE |
| 2 | 93 | 2 | 2 | 664558002 | | STIFT | | PIN |
| 2 | 94 | 1 | 1 | 664110329 | | RADABDECKUNG, ROT | | COVER, RED |
| 2 | 95 | 4 | 4 | 664735402 | | SCHRAUBE | | SCREW |
| 2 | 96 | 2 | 2 | 664735402 | | SCHRAUBE | | SCREW |
| 2 | 97 | 2 | 2 | 664755041 | | WINKEL | | BRACKET |
| 2 | 98 | 4 | 4 | 664728686 | | SCHRAUBE | | SCREW |

TM9214 (2015-2017),
TM9214H (2015-2018)

2

KARROSSERIE
BODY



TM9214 (2015-2017),
TM9214H (2015-2018)

2

KARROSSERIE
BODY

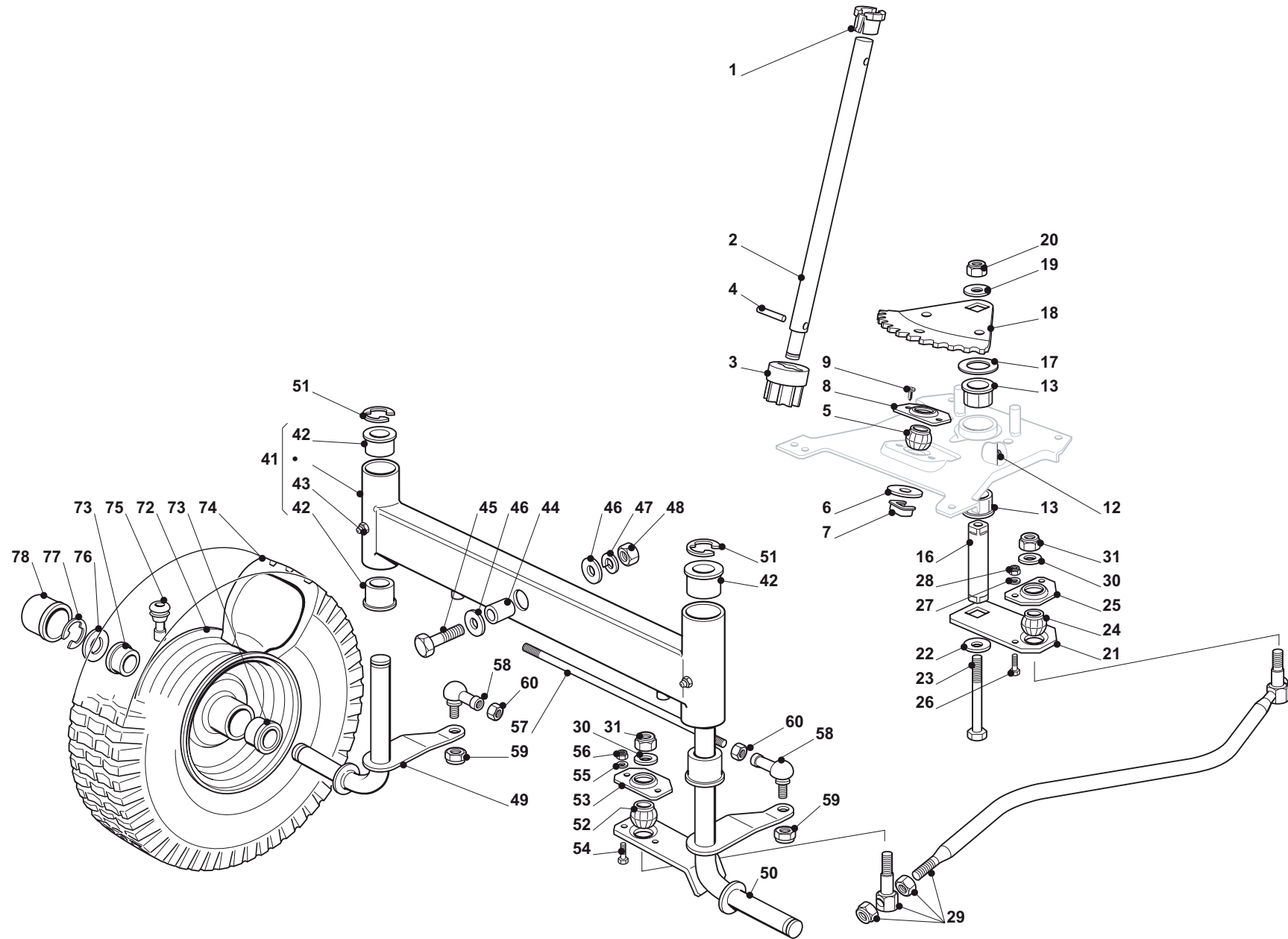


| Seite / Page | Pos. | TM9214 (2015-2017) | TM9214H (2015-2018) | Teil-Nr. Part No. | Hinweise Notes | Bezeichnung | Spezifikation Specification | Description |
|--------------|------|--------------------|---------------------|----------------------|-------------------|-------------------|--------------------------------|---------------|
| 2 | 99 | 2 | 2 | 664735110 | | SCHRAUBE | | SCREW |
| 2 | 100 | | 1 | 664207171 | => 2017 | KAPPE | | CAP |
| 2 | 100 | | 1 | 664071711 | 2018 => | KAPPE | | COVER |
| 2 | 101 | | 2 | 664735402 | | SCHRAUBE | | SCREW |
| 2 | 102 | | 4 | 664523050 | | SCHEIBE | | WASHER |
| 2 | 111 | 1 | 1 | 664028507 | | PLATTE | | PLATE |
| 2 | 115 | 1 | 1 | 664063021 | | NOCKEN | | CAM |
| 2 | 116 | 2 | 2 | 664789100 | | SCHRAUBE | | SCREW |
| 2 | 117 | 2 | 2 | 664523020 | | SCHEIBE | | WASHER |
| 2 | 118 | 2 | 2 | 664154330 | | MUTTER | | NUT |
| 2 | 119 | 1 | 1 | 664722463 | | SITZ | | SEAT |
| 2 | 120 | 4 | 4 | 664793101 | | SCHRAUBE | M8x16 | SCREW |
| 2 | 121 | 4 | 4 | 664583500 | | FEDERRING | | GROWER |
| 2 | 122 | 4 | 4 | 664523060 | | SCHEIBE | | WASHER |
| 2 | 123 | 1 | 1 | 664028508 | | SCHRAUBE | | SCREW |
| 2 | 124 | 1 | 1 | 664028509 | => 2017 | HEBEL | | LEVER |
| 2 | 125 | 1 | 1 | 664028510 | | FEDER | | SPRING |
| 2 | 126 | 1 | 1 | 664028511 | | BÜGEL | | FULCRUM CLAMP |
| 2 | 127 | 1 | 1 | 664154510 | | MUTTER | | NUT |
| 2 | 128 | 3 | 3 | 664028479 | | BOLZEN | | PIN |
| 2 | 129 | 6 | 6 | 664604896 | | SICHERUNGSSCHEIBE | | SAFETY WASHER |
| 2 | 130 | 2 | 2 | 664789000 | => 2017 | SCHRAUBE | | SCREW |
| 2 | 130 | 2 | 2 | 664028508 | 2018 => | SCHRAUBE | | SCREW |
| 2 | 143 | 1 | 1 | 664207176 | | BECKEN | | BASIN |

TM9214 (2015-2017),
TM9214H (2015-2018)

3a

LENKGETRIEBE
STEERING



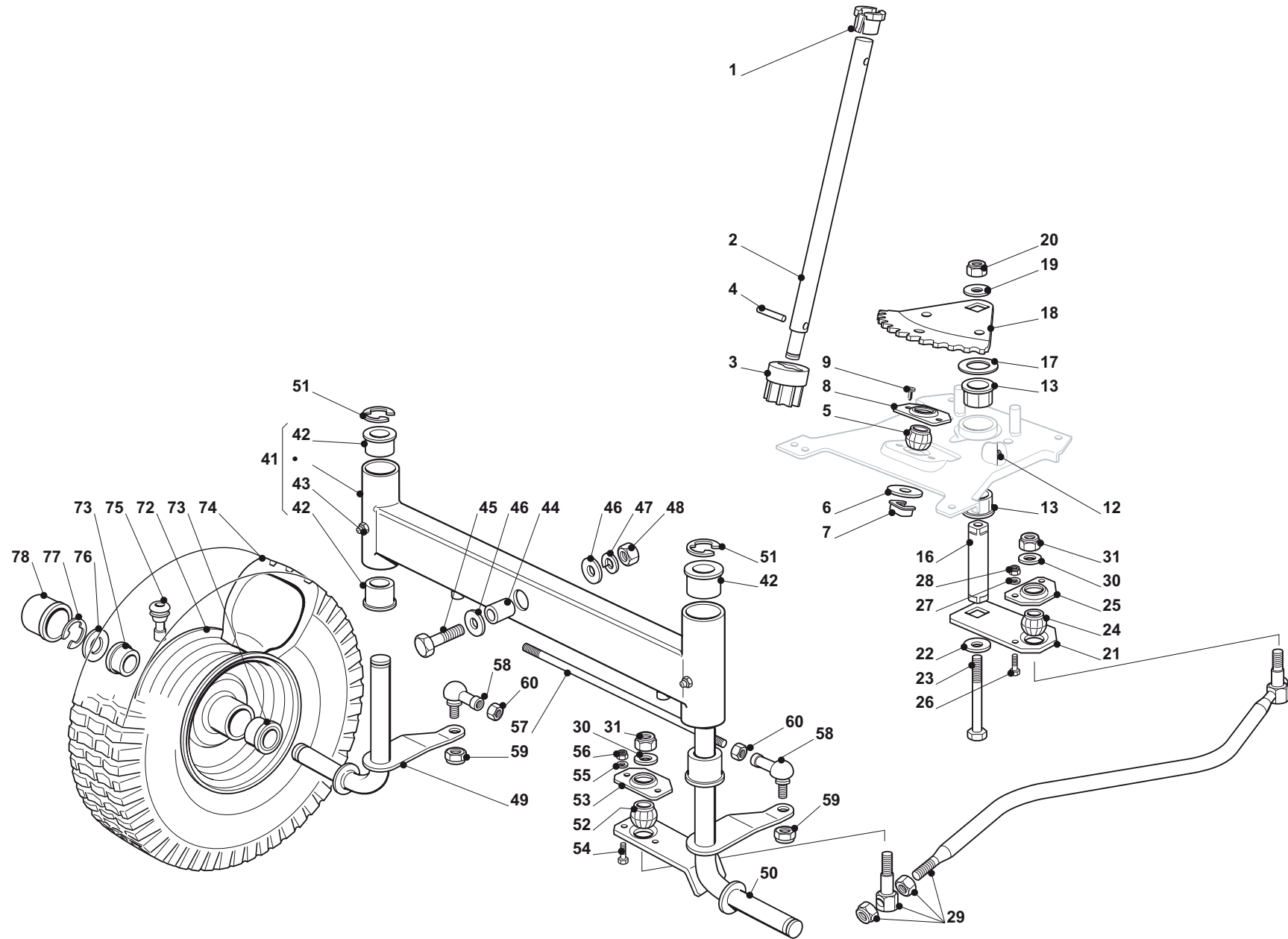


| Seite / Page | Pos. | TM9214 (2015-2017) | TM9214H (2015-2018) | Teil-Nr. Part No. | Hinweise Notes | Bezeichnung | Spezifikation Specification | Description |
|--------------|------|--------------------|---------------------|----------------------|-------------------|---------------------|--------------------------------|------------------|
| 3a | 1 | 1 | 1 | 664038004 | | BUCHSE | | BUSH |
| 3a | 2 | 1 | 1 | 664520006 | | LENKSÄULE | | STEERING COLUMN |
| 3a | 3 | 1 | 1 | 664570050 | | RITZEL | | PINION |
| 3a | 4 | 1 | 1 | 664622650 | | STIFT | | PIN |
| 3a | 5 | 1 | 1 | 664743000 | | GELENK | | JOINT |
| 3a | 6 | 1 | 1 | 664521370 | | SCHEIBE | | WASHER |
| 3a | 7 | 1 | 1 | 664436030 | | PLÄTTCHEN | | PLATE |
| 3a | 8 | 1 | 1 | 664785213 | | HALTER | | SUPPORT |
| 3a | 9 | 2 | 2 | 664729601 | | SCHRAUBE | | SCREW |
| 3a | 12 | 1 | 1 | 664379511 | | FETTBUCHSE | | GREASE DISPENSER |
| 3a | 13 | 2 | 2 | 664040624 | | BUCHSE | | BUSH |
| 3a | 16 | 1 | 1 | 664510092 | | BOLZEN | | PIN |
| 3a | 17 | 1 | 1 | 664670019 | | SCHEIBE | | WASHER |
| 3a | 18 | 1 | 1 | 664735513 | | LENKWELLE | | STEERING SHAFT |
| 3a | 19 | 1 | 1 | 664523080 | | SCHEIBE | | WASHER |
| 3a | 20 | 1 | 1 | 664155020 | | MUTTER | | NUT |
| 3a | 21 | 1 | 1 | 664318205 | | HEBEL | | LEVER |
| 3a | 22 | 1 | 1 | 664523080 | | SCHEIBE | | WASHER |
| 3a | 23 | 1 | 1 | 664794985 | | SCHRAUBE | | SCREW |
| 3a | 24 | 1 | 1 | 664743000 | | GELENK | | JOINT |
| 3a | 25 | 1 | 1 | 664785213 | | HALTER | | SUPPORT |
| 3a | 26 | 2 | 2 | 664791213 | | SCHRAUBE | | SCREW |
| 3a | 27 | 2 | 2 | 664521330 | | SCHEIBE | | WASHER |
| 3a | 28 | 2 | 2 | 664154510 | | MUTTER | | NUT |
| 3a | 29 | 1 | 1 | 664999539 | | LENKSTAB | | ROD |
| 3a | 30 | 2 | 2 | 664523070 | | SCHEIBE | | WASHER |
| 3a | 31 | 2 | 2 | 664155010 | | MUTTER | | NUT |
| 3a | 41 | 1 | 1 | 664034024 | | KIPPHEBEL KPL. | INC. 42,43 | EQUALIZER |
| 3a | 42 | 4 | 4 | 664034002 | | BUCHSE | | BUSH |
| 3a | 43 | 2 | 2 | 664379511 | | FETTBUCHSE | | GREASE DISPENSER |
| 3a | 44 | 1 | 1 | 664600161 | | DISTANZRING | | SPACER |
| 3a | 45 | 1 | 1 | 664692695 | | SCHRAUBE | | SCREW |
| 3a | 46 | 2 | 2 | 664523100 | | SCHEIBE | | WASHER |
| 3a | 47 | 1 | 1 | 664587100 | | FEDERRING | | GROWER |
| 3a | 48 | 1 | 1 | 664295300 | | MUTTER | | NUT |
| 3a | 49 | 1 | 1 | 664230363 | | ACHSSCHENKEL RECHTS | | STUB AXLE RIGHT |
| 3a | 50 | 1 | 1 | 664230365 | | ACHSSCHENKEL LINKS | | STUB AXLE LEFT |
| 3a | 51 | 2 | 2 | 664001000 | | SPRENGRING | | SNAP RING |
| 3a | 52 | 1 | 1 | 664743000 | | GELENK | | JOINT |
| 3a | 53 | 1 | 1 | 664785213 | | HALTER | | SUPPORT |
| 3a | 54 | 2 | 2 | 664791213 | | SCHRAUBE | | SCREW |
| 3a | 55 | 2 | 2 | 664521330 | | SCHEIBE | | WASHER |

TM9214 (2015-2017),
TM9214H (2015-2018)

3a

LENKGETRIEBE
STEERING



TM9214 (2015-2017),
TM9214H (2015-2018)

3a

LENKGETRIEBE
STEERING



| Seite / Page | Pos. | TM9214 (2015-2017) | TM9214H (2015-2018) | Teil-Nr. Part No. | Hinweise Notes | Bezeichnung | Spezifikation Specification | Description |
|--------------|------|--------------------|---------------------|----------------------|-------------------|-----------------|--------------------------------|-------------|
| 3a | 56 | 2 | 2 | 664154510 | | MUTTER | | NUT |
| 3a | 57 | 1 | 1 | 664840023 | | SPANNSTANGE | | TIE ROD |
| 3a | 58 | 2 | 2 | 664746609 | | GELENK | | JOINT |
| 3a | 59 | 2 | 2 | 664156602 | | MUTTER | | NUT |
| 3a | 60 | | 2 | 664295201 | | MUTTER | | NUT |
| 3a | 72 | 2 | 2 | 664000598 | | VORDERRAD FELGE | INC. 73,75 | RIMM |
| 3a | 73 | 4 | 4 | 664122210 | | LAGER | | BEARING |
| 3a | 74 | 2 | 2 | 664590019 | | REIFEN | 15 x 600-6 | TYRE |
| 3a | 75 | 2 | 2 | 664950000 | | VENTIL | | VALVE |
| 3a | 76 | 2 | 2 | 664670005 | | SCHEIBE | | WASHER |
| 3a | 77 | 2 | 2 | 664001000 | | SPRENGRING | | SNAP RING |
| 3a | 78 | 2 | 2 | 664110230 | | NABENDECKEL | | HUB COVER |

TM9214 (2015-2017),
TM9214H (2015-2018)

4m

GETRIEBE UND BREMSE ANTRIEB
DRIVE AND BRAKE CONTROLS



| Seite / Page | Pos. | Teil-Nr. Part No. | Hinweise Notes | Bezeichnung | Spezifikation Specification | Description |
|--------------|------|----------------------|-------------------|---------------|--------------------------------|--------------|
| 4m | 1 | 664999027 | | PEDAL | | PEDAL |
| 4m | 2 | 664028527 | | PEDALGUMMI | | PEDAL PAD |
| 4m | 3 | 664546015 | | PLATTE | | PLATE |
| 4m | 4 | 664729601 | | SCHRAUBE | | SCREW |
| 4m | 5 | 664000541 | => 2017 | STANGE | Peerless | ROD |
| 4m | 5 | 664005401 | 2018 => | STANGE | | ROD |
| 4m | 6 | 664523040 | | SCHEIBE | | WASHER |
| 4m | 7 | 664154510 | | MUTTER | | NUT |
| 4m | 8 | 664521350 | | SCHEIBE | | WASHER |
| 4m | 9 | 664436050 | | PLATTE | | PLATE |
| 4m | 10 | 664785261 | | HALTER | | SUPPORT |
| 4m | 11 | 664815200 | | SCHRAUBE | | SCREW |
| 4m | 12 | 664292102 | | MUTTER | | NUT |
| 4m | 13 | 664028528 | | BREMSHEBEL | | BRAKE LEVER |
| 4m | 14 | 664524970 | | BOLZEN | | PIN |
| 4m | 15 | 664155000 | | MUTTER | | NUT |
| 4m | 16 | 664430213 | | FEDER | | SPRING |
| 4m | 17 | 664207172 | | PLATTE | | PLATE |
| 4m | 20 | 664292102 | | MUTTER | | NUT |
| 4m | 21 | 664028528 | | BREMSHEBEL | | BRAKE LEVER |
| 4m | 22 | 664430213 | | FEDER | | SPRING |
| 4m | 23 | 664028529 | | BREMSHAKEN | | BRAKE HOOK |
| 4m | 24 | 664028530 | | STANGE | | ROD |
| 4m | 25 | 664041980 | | BUCHSE | | BUSH |
| 4m | 26 | 664410613 | | MIKROSCHALTER | | MICRO SWITCH |
| 4m | 27 | 664785261 | | HALTER | | SUPPORT |
| 4m | 31 | 664510035 | | BOLZEN | | PIN |
| 4m | 32 | 664774247 | | HALTER | | BRACKET |
| 4m | 33 | 664672152 | | SCHEIBE | | WASHER |
| 4m | 34 | 664523060 | | SCHEIBE | | WASHER |
| 4m | 35 | 664155010 | | MUTTER | | NUT |
| 4m | 36 | 664318215 | | HEBEL | | LEVER |
| 4m | 37 | 664394510 | | GRIFF | | KNOB |
| 4m | 38 | 664430258 | | FEDER | | SPRING |
| 4m | 39 | 664692050 | | SCHRAUBE | M8x85 | SCREW |
| 4m | 40 | 664155000 | | MUTTER | | NUT |
| 4m | 41 | 664033012 | | STANGE | | ROD |
| 4m | 42 | 664746601 | | GELENK | | JOINT |
| 4m | 43 | 664155000 | | MUTTER | | NUT |
| 4m | 44 | 664318128 | | HEBEL | | LEVER |
| 4m | 45 | 664521340 | | SCHEIBE | | WASHER |
| 4m | 46 | 664141418 | | SPLINT | | COTTER PIN |

TM9214 (2015-2017),
TM9214H (2015-2018)

4m

GETRIEBE UND BREMSE ANTRIEB
DRIVE AND BRAKE CONTROLS

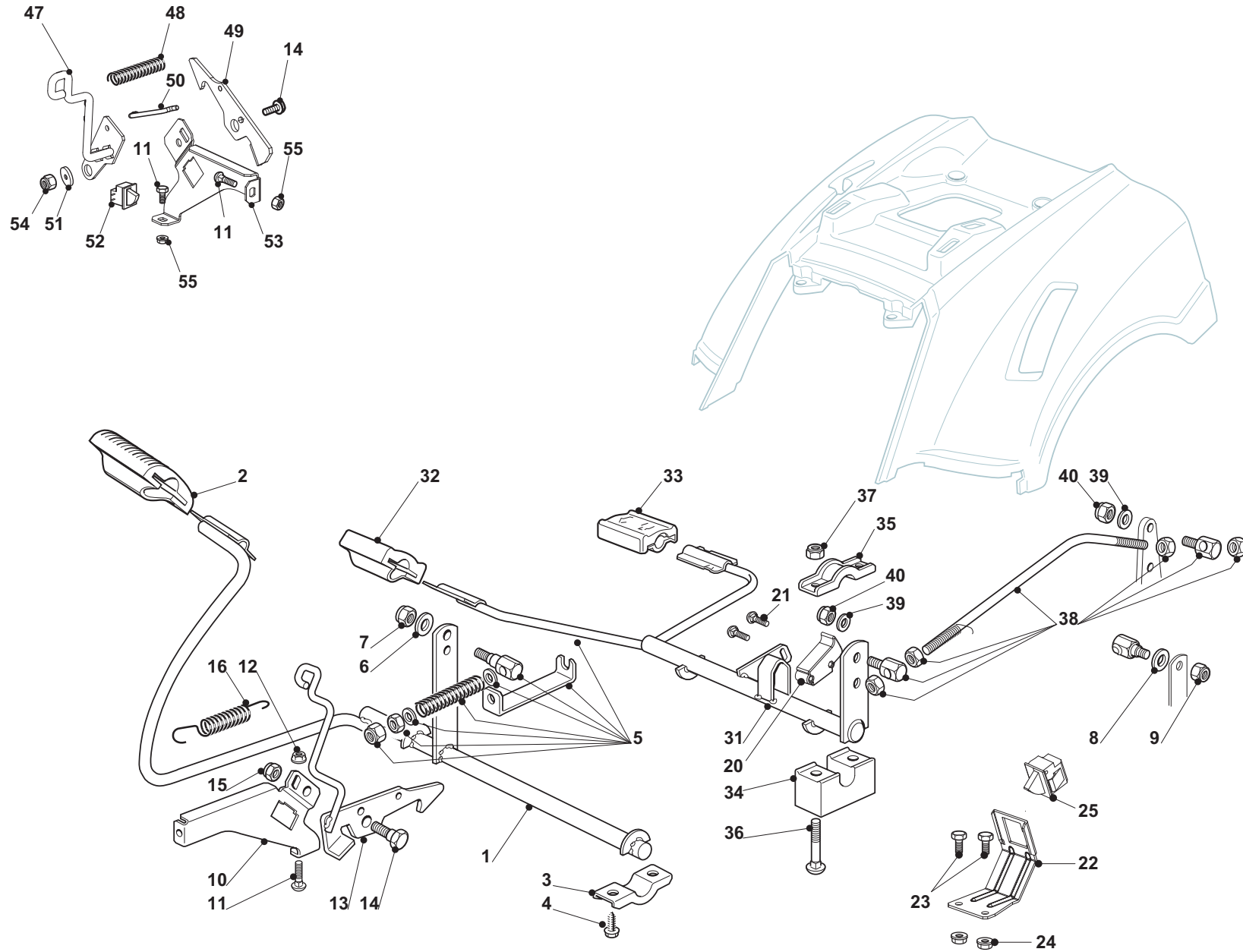


| Seite / Page | Pos. | Teil-Nr. Part No. | Hinweise Notes | Bezeichnung | Spezifikation Specification | Description |
|--------------|------|----------------------|-------------------|-----------------------|--------------------------------|----------------------------|
| 4m | 47 | 1 664689500 | | SCHRAUBE | | SCREW |
| 4m | 48 | 2 664521330 | | SCHEIBE | | WASHER |
| 4m | 49 | 1 664154510 | | MUTTER | | NUT |
| 4m | 50 | 1 664361447 | | SCHILD, GANGSCHALTUNG | | LABEL, SPEED DRIVE CONTROL |
| 4m | 51 | 1 664293200 | | MUTTER | | NUT |
| 4m | 60 | 4 664293201 | | MUTTER | | NUT |
| 4m | 61 | 2 664155010 | | MUTTER | | NUT |
| 4m | 62 | 1 664028531 | | SCHALTERAUFNAHME | | MICRO SWITCH BRACKET |
| 4m | 63 | 1 664028532 | | NOCKEN | | CAM |
| 4m | 64 | 2 664028533 | | SCHRAUBE | | SCREW |
| 4m | 65 | 1 664529662 | | BOLZEN | | PIN |
| 4m | 67 | 1 664028534 | | SCHEIBE | | WASHER |
| 4m | 68 | 1 664672152 | | SCHEIBE | | WASHER |
| 4m | 69 | 1 664028535 | | HALTER | | SUPPORT |
| 4m | 70 | 1 664410614 | | MIKROSCHALTER | | MICRO SWITCH |
| 4m | 71 | 2 664028536 | | SCHRAUBE | | SCREW |
| 4m | 72 | 1 664430213 | | FEDER | | SPRING |

TM9214 (2015-2017),
TM9214H (2015-2018)

4y

GETRIEBE UND BREMSE ANTRIEB
DRIVE AND BRAKE CONTROLS



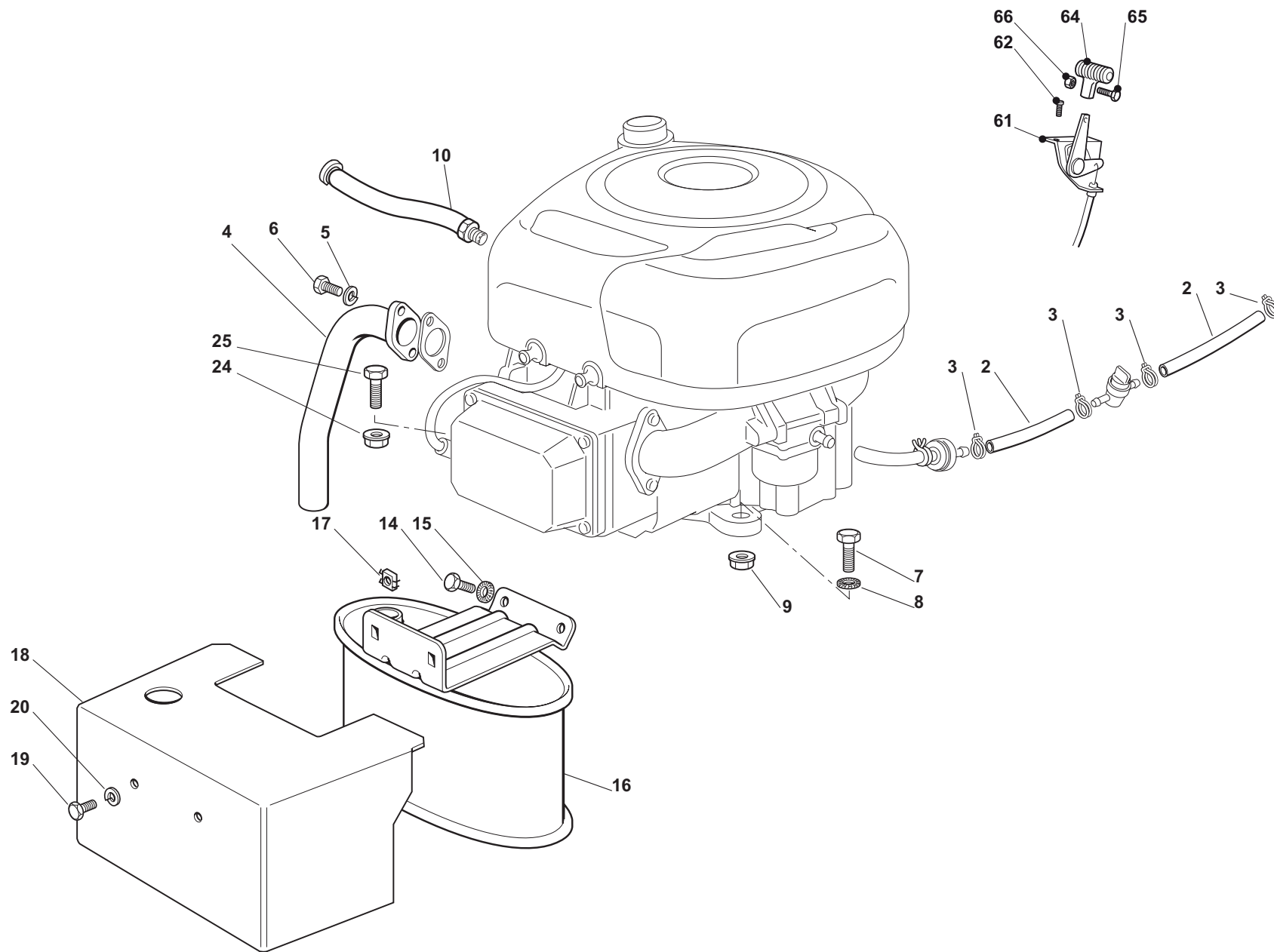
TM9214 (2015-2017),
TM9214H (2015-2018)

4y

GETRIEBE UND BREMSE ANTRIEB
DRIVE AND BRAKE CONTROLS



| Seite / Page | Pos. | Teil-Nr. Part No. | Hinweise Notes | Bezeichnung | Spezifikation Specification | Description |
|--------------|------|----------------------|-------------------|---------------|--------------------------------|--------------|
| 4y | 1 | 664999029 | | PEDAL | | PEDAL |
| 4y | 2 | 664110416 | | PEDALGUMMI | | PEDAL PAD |
| 4y | 3 | 664546015 | | PLATTE | | PLATE |
| 4y | 4 | 664729601 | | SCHRAUBE | | SCREW |
| 4y | 5 | 664000542 | | STANGE | | ROD |
| 4y | 6 | 664521350 | | SCHEIBE | | WASHER |
| 4y | 7 | 664155000 | | MUTTER | | NUT |
| 4y | 8 | 664521350 | | SCHEIBE | | WASHER |
| 4y | 9 | 664155000 | | MUTTER | | NUT |
| 4y | 10 | 664785261 | | HALTER | | SUPPORT |
| 4y | 11 | 664815200 | | SCHRAUBE | | SCREW |
| 4y | 12 | 664292102 | | MUTTER | | NUT |
| 4y | 13 | 664028528 | | BREMSHEBEL | | BRAKE LEVER |
| 4y | 14 | 664524970 | | BOLZEN | | PIN |
| 4y | 15 | 664155000 | | MUTTER | | NUT |
| 4y | 16 | 664430213 | | FEDER | | SPRING |
| 4y | 20 | 664028532 | | NOCKEN | | CAM |
| 4y | 21 | 664028533 | | SCHRAUBE | | SCREW |
| 4y | 22 | 664028537 | | PLATTE | | PLATE |
| 4y | 23 | 664793102 | | SCHRAUBE | | SCREW |
| 4y | 24 | 664293201 | | MUTTER | | NUT |
| 4y | 25 | 664410614 | | MIKROSCHALTER | | MICRO SWITCH |
| 4y | 31 | 664028538 | | GETRIEBEPEDAL | | DRIVE PEDAL |
| 4y | 32 | 664110417 | | PEDALGUMMI | | PEDAL PAD |
| 4y | 33 | 664511041 | | PEDALGUMMI | | PEDAL PAD |
| 4y | 34 | 664785185 | | HALTER | | SUPPORT |
| 4y | 35 | 664546015 | | PLATTE | | PLATE |
| 4y | 36 | 664815245 | | SCHRAUBE | | SCREW |
| 4y | 37 | 664154510 | | MUTTER | | NUT |
| 4y | 38 | 664000543 | | STANGE | | ROD |
| 4y | 39 | 664523040 | | SCHEIBE | | WASHER |
| 4y | 40 | 664154510 | | MUTTER | | NUT |
| 4y | 47 | 664028528 | | BREMSHEBEL | | BRAKE LEVER |
| 4y | 48 | 664430213 | | FEDER | | SPRING |
| 4y | 49 | 664028529 | | BREMSSHAKEN | | BRAKE HOOK |
| 4y | 50 | 664028530 | | STANGE | | ROD |
| 4y | 51 | 664041980 | | BUCHSE | | BUSH |
| 4y | 52 | 664410613 | | MIKROSCHALTER | | MICRO SWITCH |
| 4y | 53 | 664785261 | | HALTER | | SUPPORT |
| 4y | 54 | 664155010 | | MUTTER | | NUT |
| 4y | 55 | 664292102 | | MUTTER | | NUT |



TM9214 (2015-2017),
TM9214H (2015-2018)

5

Motor
Motor

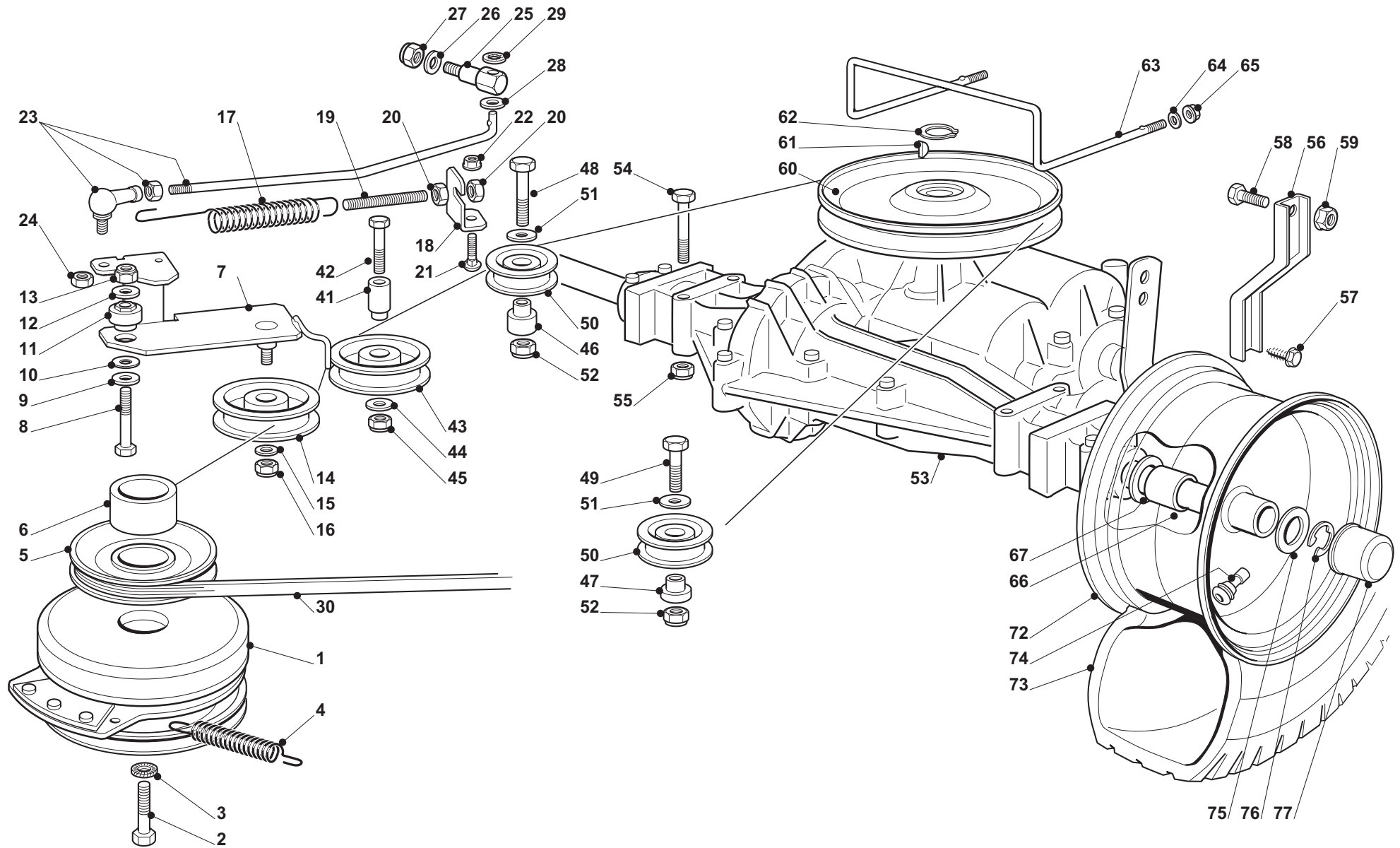


| Seite / Page | Pos. | TM9214 (2015-2017) | TM9214H (2015-2018) | Teil-Nr. Part No. | Hinweise Notes | Bezeichnung | Spezifikation Specification | Description |
|--------------|------|--------------------|---------------------|----------------------|-------------------|-----------------|--------------------------------|-------------------------|
| 5 | 2 | 1 | 1 | 664869057 | | VERBINDUNGSROHR | | TUBE |
| 5 | 3 | 4 | 4 | 664375051 | | SCHLAUCHKLEMME | | HOSE CLAMP |
| 5 | 4 | 1 | 1 | 664738224 | | ABGASROHR | | TUBE |
| 5 | 5 | 2 | 2 | 664583500 | | FEDERRING | | GROWER |
| 5 | 6 | 2 | 2 | 664735530 | | SCHRAUBE | | SCREW |
| 5 | 7 | 1 | 1 | 664691115 | | SCHRAUBE | | SCREW |
| 5 | 8 | 1 | 1 | 664540260 | | SCHEIBE | | WASHER |
| 5 | 9 | 1 | 1 | 664154210 | | MUTTER | | NUT |
| 5 | 10 | 1 | 1 | 664345827 | | ÖLABFLUSS | | OIL DISCHARGE EXTENSION |
| 5 | 14 | 2 | 2 | 664793102 | | SCHRAUBE | | SCREW |
| 5 | 15 | 2 | 2 | 664540260 | | SCHEIBE | | WASHER |
| 5 | 16 | 1 | 1 | 664750010 | | SCHALLDÄMPFER | | MUFFLER |
| 5 | 17 | 2 | 2 | 664360425 | | MUTTER | | NUT |
| 5 | 18 | 1 | 1 | 664598009 | | SCHUTZ | | PROTECTION |
| 5 | 19 | 2 | 2 | 664792611 | | SCHRAUBE | | SCREW |
| 5 | 20 | 2 | 2 | 664583500 | | FEDERRING | | GROWER |
| 5 | 24 | 3 | 3 | 664154210 | | MUTTER | | NUT |
| 5 | 25 | 3 | 3 | 664691100 | | SCHRAUBE | | SCREW |
| 5 | 61 | 1 | 1 | 664000200 | | GASZUG | | BOWDEN CABLE |
| 5 | 62 | 2 | 2 | 664943012 | | SCHRAUBE | | SCREW |
| 5 | 64 | 1 | 1 | 664394501 | | GRIFF | | HANDLE |
| 5 | 65 | 1 | 1 | 664726399 | | SCHRAUBE | | SCREW |
| 5 | 66 | 1 | 1 | 664290800 | | MUTTER | | NUT |

TM9214 (2015-2017),
TM9214H (2015-2018)

6m

Getriebe
Gear



TM9214 (2015-2017),
TM9214H (2015-2018)

6m

Getriebe
Gear

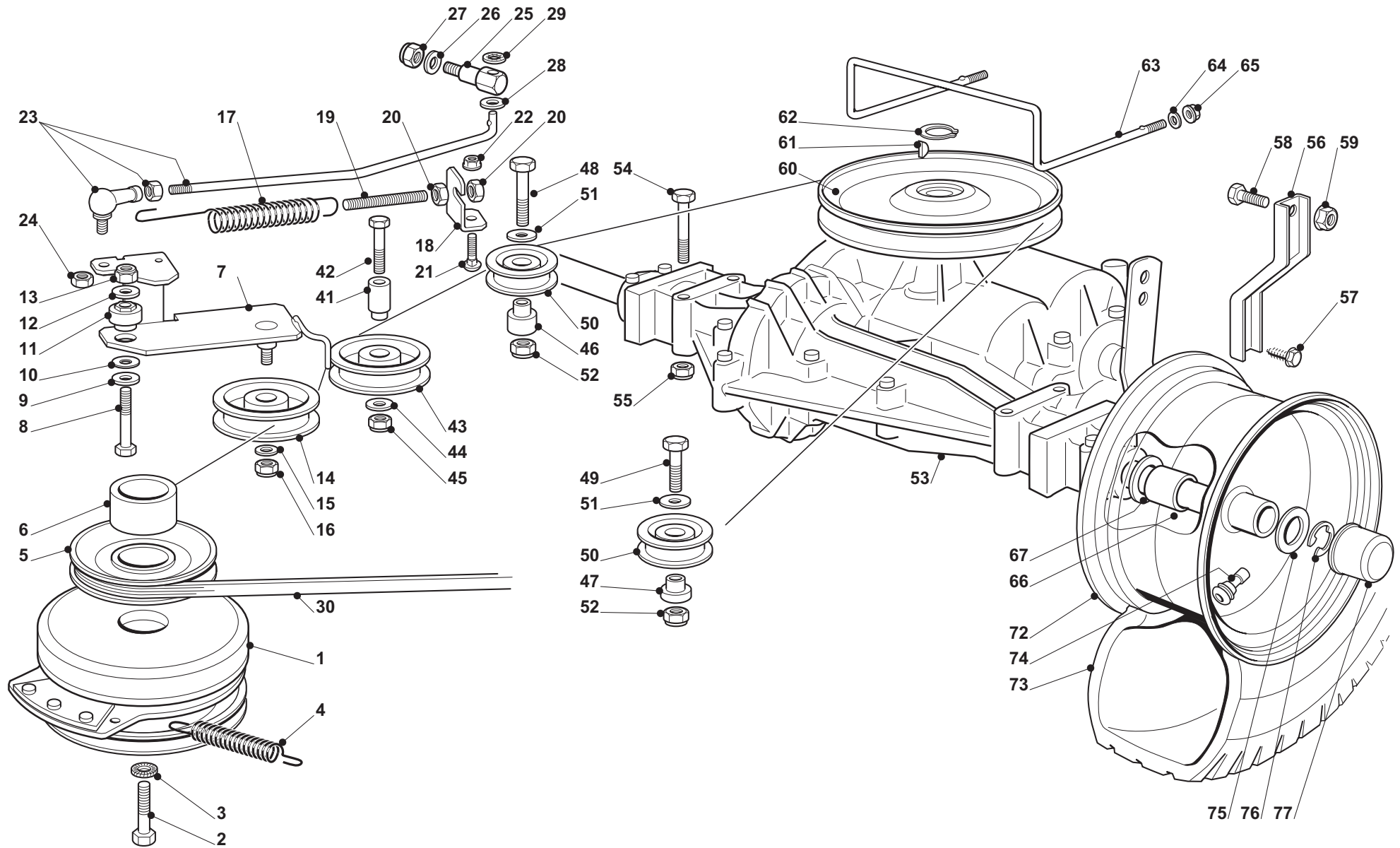


| Seite / Page | Pos. | Teil-Nr. Part No. | Hinweise Notes | Bezeichnung | Spezifikation Specification | Description |
|--------------|------|----------------------|-------------------|---------------------|--------------------------------|---------------|
| 6m | 1 | 664399063 | | KUPPLUNG | | CLUTCH |
| 6m | 2 | 664737320 | | SCHRAUBE | | SCREW |
| 6m | 3 | 664543000 | | SCHEIBE | | WASHER |
| 6m | 4 | 664430216 | | FEDER | | SPRING |
| 6m | 5 | 664601567 | | RIEMENSCHLEIBE | | PULLEY |
| 6m | 6 | 664600590 | | DISTANZBUCHSE | | SPACER |
| 6m | 7 | 664318217 | => 2017 | HEBEL | | LEVER |
| 6m | 7 | 664182171 | 2018 => | HEBEL | | LEVER |
| 6m | 8 | 664691115 | | SCHRAUBE | | SCREW |
| 6m | 9 | 664523060 | | SCHEIBE | | WASHER |
| 6m | 10 | 664670055 | | SCHEIBE | | WASHER |
| 6m | 11 | 664510087 | | BOLZEN | | PIN |
| 6m | 12 | 664523060 | | SCHEIBE | | WASHER |
| 6m | 13 | 664155000 | | MUTTER | | NUT |
| 6m | 14 | 664601554 | | RIEMENSCHLEIBE | | PULLEY |
| 6m | 15 | 664523060 | | SCHEIBE | | WASHER |
| 6m | 16 | 664155000 | | MUTTER | | NUT |
| 6m | 17 | 664430260 | => 2017 | FEDER | | SPRING |
| 6m | 17 | 664302601 | 2018 => | FEDER | | SPRING |
| 6m | 18 | 664755049 | | WINKEL | | BRACKET |
| 6m | 19 | 664840005 | | SPANNSTANGE | | TIE ROD |
| 6m | 20 | 664293200 | | MUTTER | | NUT |
| 6m | 21 | 664818690 | => 2017 | SCHRAUBE | | SCREW |
| 6m | 21 | 664082016 | 2018 => | SCHRAUBE | | SCREW |
| 6m | 22 | 664293201 | | MUTTER | | NUT |
| 6m | 23 | 664820013 | | SPANNSTANGE KPL. | | TIE ROD ASSY. |
| 6m | 24 | 664155000 | | MUTTER | | NUT |
| 6m | 25 | 664510063 | | BOLZEN | | PIN |
| 6m | 26 | 664670011 | | SCHEIBE | | WASHER |
| 6m | 27 | 664155000 | | MUTTER | | NUT |
| 6m | 28 | 664521350 | | SCHEIBE | | WASHER |
| 6m | 29 | 664604899 | | SICHERUNGSSCHLEIBE | | SAFETY WASHER |
| 6m | 30 | 664062012 | | KEILRIEMEN | A98 | V-BELT |
| 6m | 41 | 664028540 | | BOLZEN | | PIN |
| 6m | 42 | 664691800 | | SCHRAUBE | | SCREW |
| 6m | 43 | 664028523 | | RIEMENSCHLEIBE | | PULLEY |
| 6m | 44 | 664523060 | | SCHEIBE | | WASHER |
| 6m | 45 | 664155000 | | MUTTER | | NUT |
| 6m | 46 | 664160014 | | DISTANZSTÜCK RECHTS | | SPACER |
| 6m | 47 | 664160018 | | DISTANZSTÜCK LINKS | | SPACER LEFT |
| 6m | 48 | 664691200 | | SCHRAUBE | | SCREW |
| 6m | 49 | 664691100 | | SCHRAUBE | | SCREW |

TM9214 (2015-2017),
TM9214H (2015-2018)

6m

Getriebe
Gear



TM9214 (2015-2017),
TM9214H (2015-2018)

6m

Getriebe
Gear

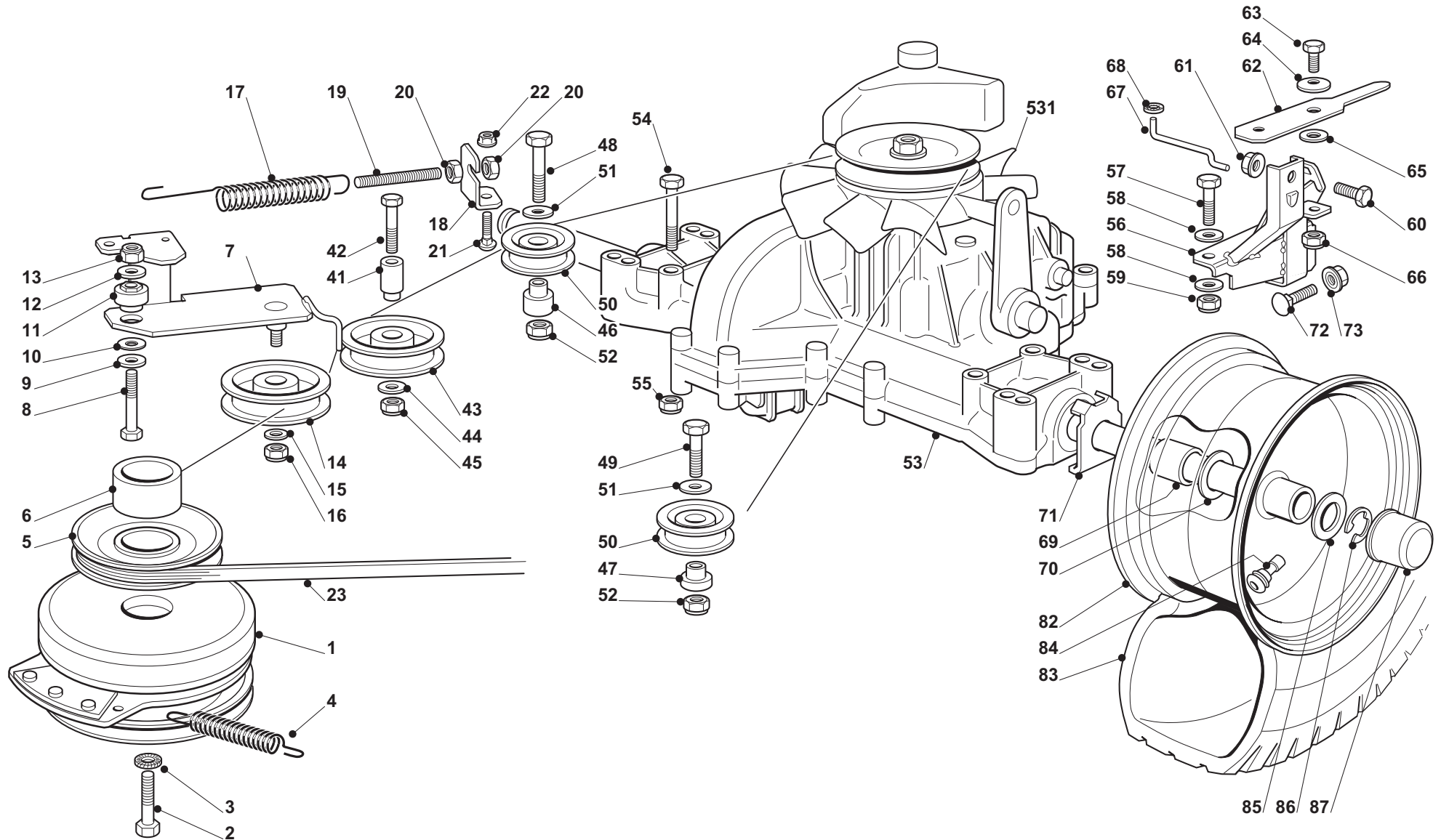


| Seite / Page | Pos. | Teil-Nr. Part No. | Hinweise Notes | Bezeichnung | Spezifikation Specification | Description |
|--------------|------|----------------------|-------------------|--------------------|--------------------------------|-------------|
| 6m | 50 | 2 664601588 | | RIEMENSCHLEIBE | | PULLEY |
| 6m | 51 | 2 664671653 | | SCHEIBE | | WASHER |
| 6m | 52 | 2 664155000 | | MUTTER | | NUT |
| 6m | 53 | 1 664400910 | | HINTERACHSE | | REAR AXLE |
| 6m | 54 | 4 664691800 | | SCHRAUBE | | SCREW |
| 6m | 55 | 4 664154210 | | MUTTER | | NUT |
| 6m | 56 | 2 664999247 | | HALTER | | BRACKET |
| 6m | 57 | 2 664735150 | | SCHRAUBE | | SCREW |
| 6m | 58 | 2 664792611 | | SCHRAUBE | | SCREW |
| 6m | 59 | 2 664293201 | | MUTTER | | NUT |
| 6m | 60 | 1 664601509 | | RIEMENSCHLEIBE | | PULLEY |
| 6m | 61 | 1 664139430 | | KEIL | | KEY |
| 6m | 62 | 1 664608950 | | SPRENGRING | | SNAP RING |
| 6m | 63 | 1 664270321 | | RIEMENFÜHRUNG | | BELT GUIDE |
| 6m | 64 | 2 664523040 | | SCHEIBE | | WASHER |
| 6m | 65 | 2 664292102 | | MUTTER | | NUT |
| 6m | 66 | 2 664160031 | | DISTANZBUCHSE | | SPACER |
| 6m | 67 | 2-4 664521410 | | SCHEIBE | | WASHER |
| 6m | 72 | 2 664000599 | | HINTERRAD FELGE | | RIMM |
| 6m | 73 | 2 664590015 | | REIFEN | | TYRE |
| 6m | 74 | 2 664950000 | | VENTIL | | VALVE |
| 6m | 75 | 2 664670005 | | SCHEIBE | | WASHER |
| 6m | 76 | 2 664001010 | | SICHERUNGSSCHLEIBE | | LOCK WASHER |
| 6m | 77 | 2 664110230 | | NABENDECKEL | | HUB COVER |

TM9214 (2015-2017),
TM9214H (2015-2018)

6y

Getriebe
Gear



TM9214 (2015-2017),
TM9214H (2015-2018)

6y

Getriebe
Gear

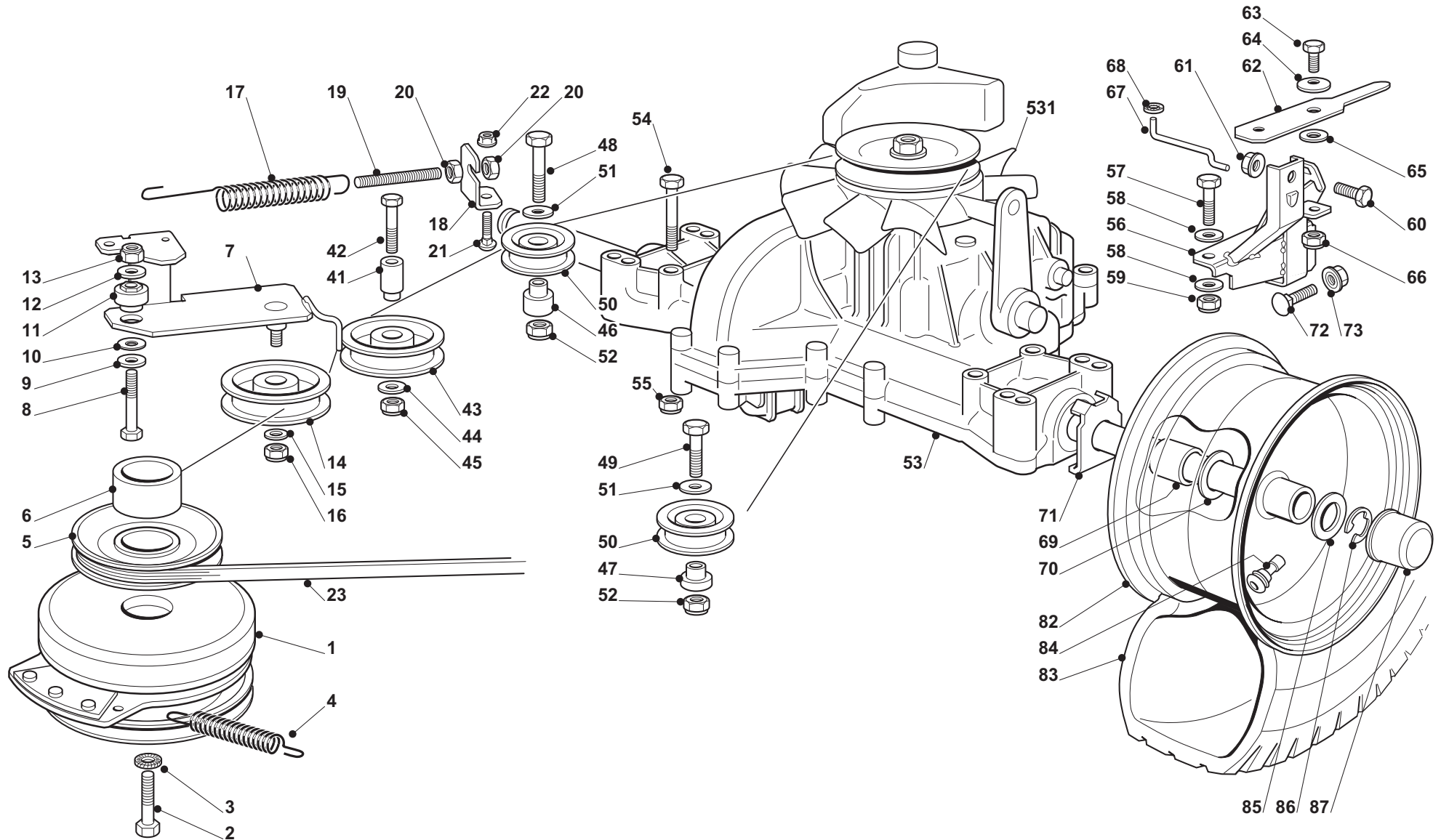


| Seite / Page | Pos. | Teil-Nr. Part No. | Hinweise Notes | Bezeichnung | Spezifikation Specification | Description |
|--------------|------|----------------------|-------------------|---------------------|--------------------------------|-----------------|
| 6y | 1 | 664399063 | | KUPPLUNG | | CLUTCH |
| 6y | 2 | 664737320 | | SCHRAUBE | | SCREW |
| 6y | 3 | 664543000 | | SCHEIBE | | WASHER |
| 6y | 4 | 664430216 | | FEDER | | SPRING |
| 6y | 5 | 664601566 | | RIEMENSCHLEIBE | | PULLEY |
| 6y | 6 | 664600590 | | DISTANZBUCHSE | | SPACER |
| 6y | 7 | 664318217 | => 2017 | HEBEL | | LEVER |
| 6y | 7 | 664182171 | 2018 => | HEBEL | | LEVER |
| 6y | 8 | 664691115 | | SCHRAUBE | | SCREW |
| 6y | 9 | 664523060 | | SCHEIBE | | WASHER |
| 6y | 10 | 664670055 | | SCHEIBE | | WASHER |
| 6y | 11 | 664510087 | | BOLZEN | | PIN |
| 6y | 12 | 664523060 | | SCHEIBE | | WASHER |
| 6y | 13 | 664155000 | | MUTTER | | NUT |
| 6y | 14 | 664601554 | | RIEMENSCHLEIBE | | PULLEY |
| 6y | 15 | 664523060 | | SCHEIBE | | WASHER |
| 6y | 16 | 664155000 | | MUTTER | | NUT |
| 6y | 17 | 664430260 | => 2017 | FEDER | | SPRING |
| 6y | 17 | 664302601 | 2018 => | FEDER | | SPRING |
| 6y | 18 | 664755049 | | WINKEL | | BRACKET |
| 6y | 19 | 664840005 | | SPANNSTANGE | | TIE ROD |
| 6y | 20 | 664293200 | | MUTTER | | NUT |
| 6y | 21 | 664818690 | => 2017 | SCHRAUBE | | SCREW |
| 6y | 21 | 664082016 | 2018 => | SCHRAUBE | | SCREW |
| 6y | 22 | 664293201 | | MUTTER | | NUT |
| 6y | 23 | 664028541 | => 2017 | KEILRIEMEN | | V-BELT |
| 6y | 23 | 664620201 | 2018 => | KEILRIEMEN | | V-BELT |
| 6y | 41 | 664028540 | | BOLZEN | | PIN |
| 6y | 42 | 664691800 | | SCHRAUBE | | SCREW |
| 6y | 43 | 664028523 | | RIEMENSCHLEIBE | | PULLEY |
| 6y | 44 | 664523060 | | SCHEIBE | | WASHER |
| 6y | 45 | 664155000 | | MUTTER | | NUT |
| 6y | 46 | 664160024 | | DISTANZSTÜCK RECHTS | | SPACER |
| 6y | 47 | 664160030 | | DISTANZSTÜCK LINKS | | SPACER |
| 6y | 48 | 664691400 | | SCHRAUBE | | SCREW |
| 6y | 49 | 664691115 | | SCHRAUBE | | SCREW |
| 6y | 50 | 664601588 | | RIEMENSCHLEIBE | | PULLEY |
| 6y | 51 | 664671653 | | SCHEIBE | | WASHER |
| 6y | 52 | 664155000 | | MUTTER | | NUT |
| 6y | 53 | 664400960 | | HINTERACHSE KPL. | Tuff-Torq K46S | REAR AXLE ASSY. |
| 6y | 531 | 664083050 | | LÜFTERRAD | | FAN |
| 6y | 54 | 664691800 | | SCHRAUBE | | SCREW |

TM9214 (2015-2017),
TM9214H (2015-2018)

6y

Getriebe
Gear



TM9214 (2015-2017),
TM9214H (2015-2018)

6y

Getriebe
Gear

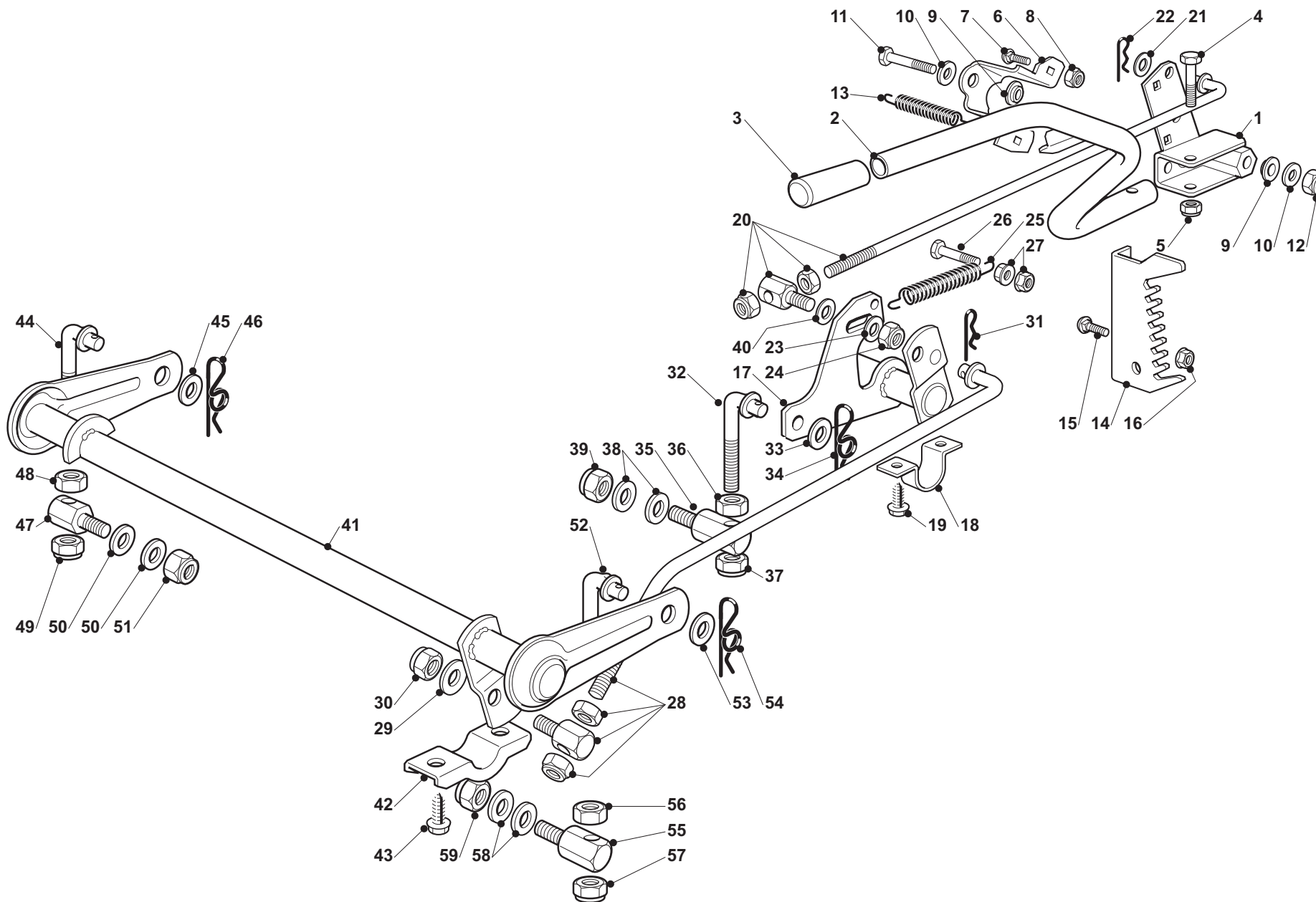


| Seite / Page | Pos. | Teil-Nr. Part No. | Hinweise Notes | Bezeichnung | Spezifikation Specification | Description |
|--------------|------|----------------------|-------------------|-------------------|--------------------------------|----------------|
| 6y | 55 | 4 664154210 | | MUTTER | | NUT |
| 6y | 56 | 1 664999149 | | HALTER | | SUPPORT |
| 6y | 57 | 1 664691200 | | SCHRAUBE | | SCREW |
| 6y | 58 | 2 664521350 | | SCHEIBE | | WASHER |
| 6y | 59 | 1 664155000 | | MUTTER | | NUT |
| 6y | 60 | 1 664792611 | | SCHRAUBE | | SCREW |
| 6y | 61 | 1 664293201 | | MUTTER | | NUT |
| 6y | 62 | 1 664318157 | | HEBEL | | LEVER |
| 6y | 63 | 1 664793102 | | SCHRAUBE | | SCREW |
| 6y | 64 | 1 664369500 | | FEDERSCHEIBE | | ELASTIC WASHER |
| 6y | 65 | 1 664670011 | | SCHEIBE | | WASHER |
| 6y | 66 | 1 664155000 | | MUTTER | | NUT |
| 6y | 67 | 1 664033033 | | STANGE | | ROD |
| 6y | 68 | 1 664604896 | | SICHERUNGSSCHEIBE | | SAFETY WASHER |
| 6y | 69 | 2 664160031 | | DISTANZBUCHSE | | SPACER |
| 6y | 70 | 2-4 664521410 | | SCHEIBE | | WASHER |
| 6y | 71 | 2 664670025 | | SCHEIBE | | WASHER |
| 6y | 72 | 1 664792611 | | SCHRAUBE | | SCREW |
| 6y | 73 | 1 664293201 | | MUTTER | | NUT |
| 6y | 82 | 2 664000599 | | HINTERRAD FELGE | | RIMM |
| 6y | 83 | 2 664590015 | | REIFEN | | TYRE |
| 6y | 84 | 2 664950000 | | VENTIL | | VALVE |
| 6y | 85 | 2 664670005 | | SCHEIBE | | WASHER |
| 6y | 86 | 2 664001010 | | SICHERUNGSSCHEIBE | | LOCK WASHER |
| 6y | 87 | 2 664110230 | | NABENDECKEL | | HUB COVER |

TM9214 (2015-2017),
TM9214H (2015-2018)

7

SCHNEIDWERKZEUG AUFHEBESATZ
CUTTING PLATE LIFTING



TM9214 (2015-2017),
TM9214H (2015-2018)

7

SCHNEIDWERKZEUG AUFHEBESATZ
CUTTING PLATE LIFTING

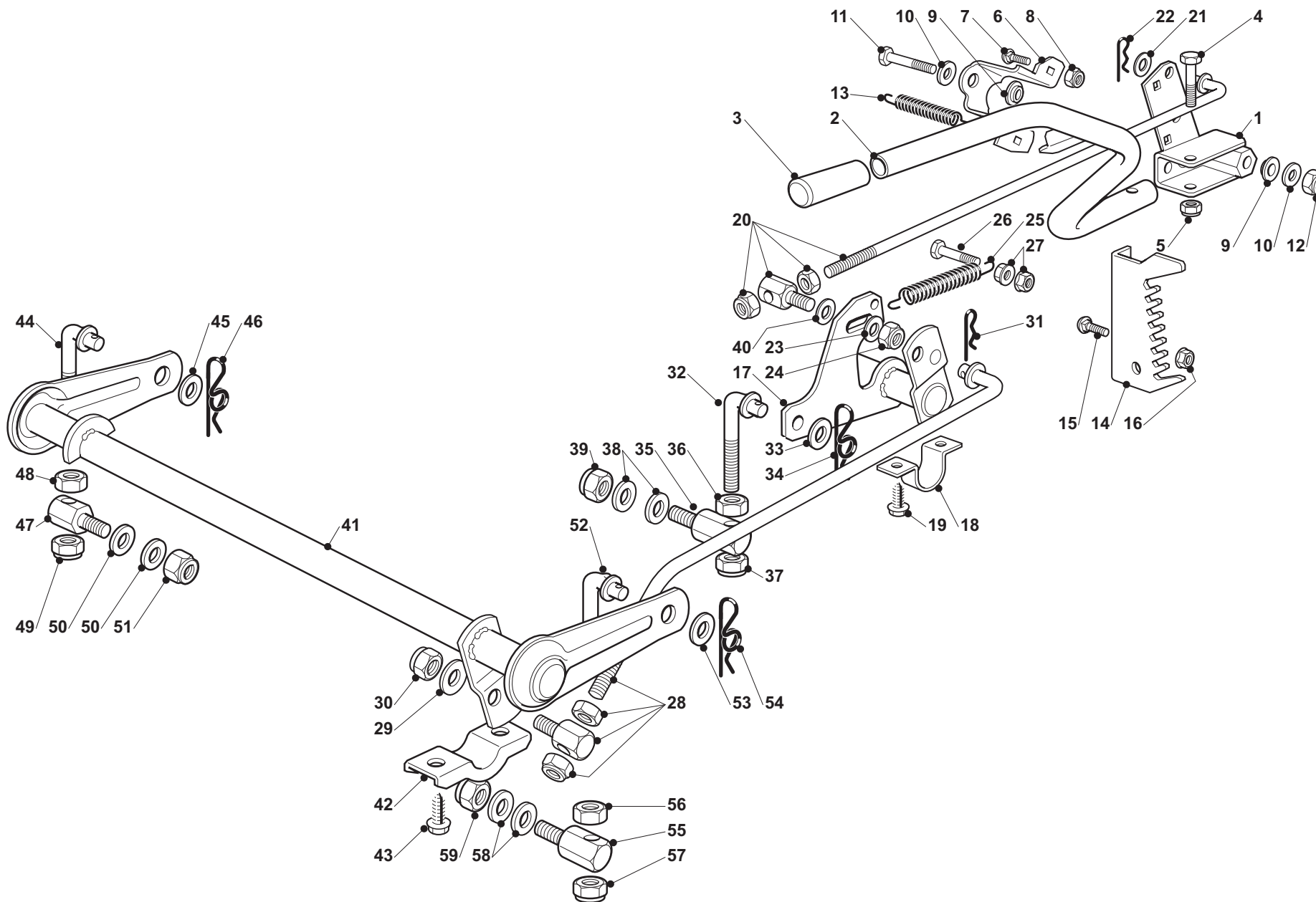


| Seite / Page | Pos. | TM9214 (2015-2017) | TM9214H (2015-2018) | Teil-Nr. Part No. | Hinweise Notes | Bezeichnung | Spezifikation Specification | Description |
|--------------|------|--------------------|---------------------|----------------------|-------------------|-----------------|--------------------------------|----------------|
| 7 | 1 | 1 | 1 | 664774249 | | HALTER | | BRACKET |
| 7 | 2 | 1 | 1 | 664318219 | | HEBEL | | LEVER |
| 7 | 3 | 1 | 1 | 664394535 | | GRIFF | | HANDLE |
| 7 | 4 | 1 | 1 | 664674700 | | SCHRAUBE | | SCREW |
| 7 | 5 | 1 | 1 | 664154510 | | MUTTER | | NUT |
| 7 | 6 | 1 | 1 | 664650113 | | PLATTE | | PLATE |
| 7 | 7 | 2 | 2 | 664818690 | => 2017 | SCHRAUBE | | SCREW |
| 7 | 7 | 2 | 2 | 664082016 | 2018 => | SCHRAUBE | | SCREW |
| 7 | 8 | 2 | 2 | 664155000 | | MUTTER | | NUT |
| 7 | 9 | 2 | 2 | 664041980 | | BUCHSE | | BUSH |
| 7 | 10 | 2 | 2 | 664523060 | | SCHEIBE | | WASHER |
| 7 | 11 | 1 | 1 | 664691600 | | SCHRAUBE | | SCREW |
| 7 | 12 | 1 | 1 | 664155000 | | MUTTER | | NUT |
| 7 | 13 | 1 | 1 | 664430259 | | FEDER | | SPRING |
| 7 | 14 | 1 | 1 | 664735511 | | SEKTOR | | SECTOR |
| 7 | 15 | 2 | 2 | 664818690 | => 2017 | SCHRAUBE | | SCREW |
| 7 | 15 | 2 | 2 | 664082016 | 2018 => | SCHRAUBE | | SCREW |
| 7 | 16 | 2 | 2 | 664293201 | | MUTTER | | NUT |
| 7 | 17 | 1 | 1 | 664000387 | | ACHSE | | AXLE |
| 7 | 18 | 2 | 2 | 664547041 | | PLATTE | | PLATE |
| 7 | 19 | 4 | 4 | 664731580 | | SCHRAUBE | | SCREW |
| 7 | 20 | 1 | 1 | 664000618 | | STAB | | ROD |
| 7 | 21 | 1 | 1 | 664670011 | | SCHEIBE | | WASHER |
| 7 | 22 | 1 | 1 | 664487997 | | SPLINT | | COTTER PIN |
| 7 | 23 | 1 | 1 | 664670008 | | SCHEIBE | | WASHER |
| 7 | 24 | 1 | 1 | 664154210 | | MUTTER | | NUT |
| 7 | 25 | 1 | 1 | 664446402 | | FEDER | | SPRING |
| 7 | 26 | 1 | 1 | 664792410 | | SCHRAUBE | | SCREW |
| 7 | 27 | 2 | 2 | 664292102 | | MUTTER | | NUT |
| 7 | 28 | 1 | 1 | 664000537 | | VERBINDUNGSSTAB | | CONNECTING ROD |
| 7 | 29 | 2 | 2 | 664670008 | | SCHEIBE | | WASHER |
| 7 | 30 | 1 | 1 | 664156602 | | MUTTER | | NUT |
| 7 | 31 | 1 | 1 | 664487998 | | SPLINT | | COTTER PIN |
| 7 | 32 | 1 | 1 | 664840025 | | SPANNSTANGE | | TIE ROD |
| 7 | 33 | 1 | 1 | 664670008 | | SCHEIBE | | WASHER |
| 7 | 34 | 1 | 1 | 664487998 | | SPLINT | | COTTER PIN |
| 7 | 35 | 1 | 1 | 664510090 | | BOLZEN | | PIN |
| 7 | 36 | 1 | 1 | 664295200 | | MUTTER | | NUT |
| 7 | 37 | 1 | 1 | 664156602 | | MUTTER | | NUT |
| 7 | 38 | 2 | 2 | 664670008 | | SCHEIBE | | WASHER |
| 7 | 39 | 1 | 1 | 664156602 | | MUTTER | | NUT |
| 7 | 40 | 2 | 2 | 664521360 | | SCHEIBE | | WASHER |

TM9214 (2015-2017),
TM9214H (2015-2018)

7

SCHNEIDWERKZEUG AUFHEBESATZ
CUTTING PLATE LIFTING



TM9214 (2015-2017),
TM9214H (2015-2018)

7

SCHNEIDWERKZEUG AUFHEBESATZ
CUTTING PLATE LIFTING



| Seite / Page | Pos. | TM9214 (2015-2017) | | TM9214H (2015-2018) | | Teil-Nr. Part No. | Hinweise Notes | Bezeichnung | Spezifikation Specification | Description |
|--------------|------|--------------------|---|---------------------|---------|----------------------|-------------------|------------------------|--------------------------------|-------------------|
| | | | | | | | | | | |
| 7 | 41 | 1 | 1 | 664000385 | | | | ACHSE | | AXLE |
| 7 | 42 | 2 | 2 | 664546015 | | | | PLATTE | | PLATE |
| 7 | 43 | 4 | 4 | 664731350 | | | | SCHRAUBE | | SCREW |
| 7 | 44 | 1 | 1 | 664840025 | | | | SPANNSTANGE | | TIE ROD |
| 7 | 45 | 1 | 1 | 664670008 | | | | SCHEIBE | | WASHER |
| 7 | 46 | 1 | 1 | 664487998 | | | | SPLINT | | COTTER PIN |
| 7 | 47 | 1 | 1 | 664510098 | => 2017 | | | BOLZEN MIT SPANNSTANGE | INC. 44,48,49 | PIN |
| 7 | 47 | 1 | 1 | 664640807 | 2018 => | | | BOLZEN MIT SPANNSTANGE | INC. 44,48,49 | BOLT WITH TIE ROD |
| 7 | 48 | 1 | 1 | 664295200 | | | | MUTTER | | NUT |
| 7 | 49 | 1 | 1 | 664156602 | | | | MUTTER | | NUT |
| 7 | 50 | 2 | 2 | 664670008 | | | | SCHEIBE | | WASHER |
| 7 | 51 | 1 | 1 | 664156602 | | | | MUTTER | | NUT |
| 7 | 52 | 1 | 1 | 664840025 | | | | SPANNSTANGE | | TIE ROD |
| 7 | 53 | 1 | 1 | 664670008 | | | | SCHEIBE | | WASHER |
| 7 | 54 | 1 | 1 | 664487998 | | | | SPLINT | | COTTER PIN |
| 7 | 55 | 1 | 1 | 664510090 | | | | BOLZEN | | PIN |
| 7 | 56 | 1 | 1 | 664295200 | | | | MUTTER | | NUT |
| 7 | 57 | 1 | 1 | 664156602 | | | | MUTTER | | NUT |
| 7 | 58 | 2 | 2 | 664670008 | | | | SCHEIBE | | WASHER |
| 7 | 59 | 1 | 1 | 664156602 | | | | MUTTER | | NUT |

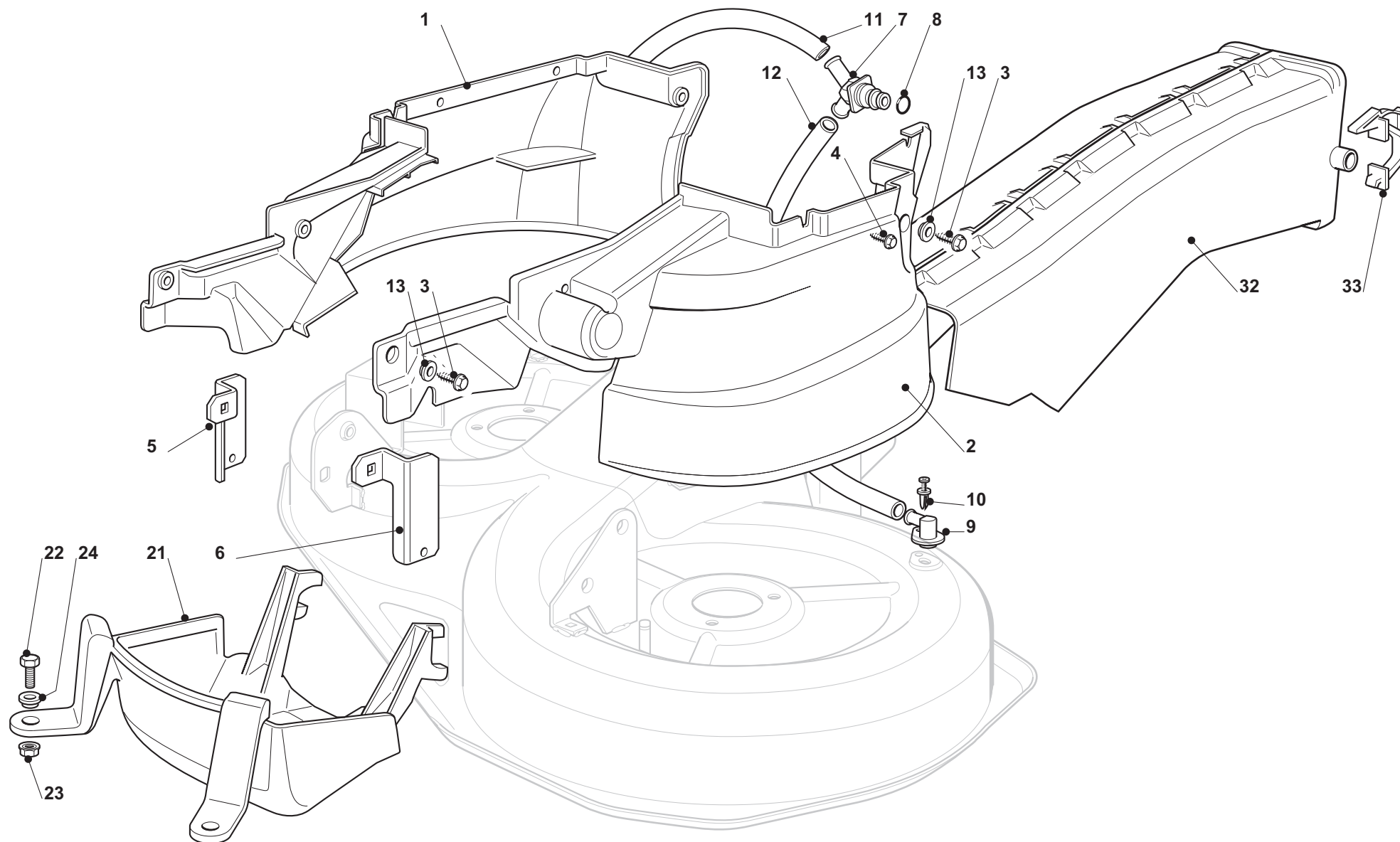
TM9214 (2015-2017),
TM9214H (2015-2018)

8

SCHNEIDWERKZEUG (1)
CUTTING PLATE (1)

makita

DOLMAR



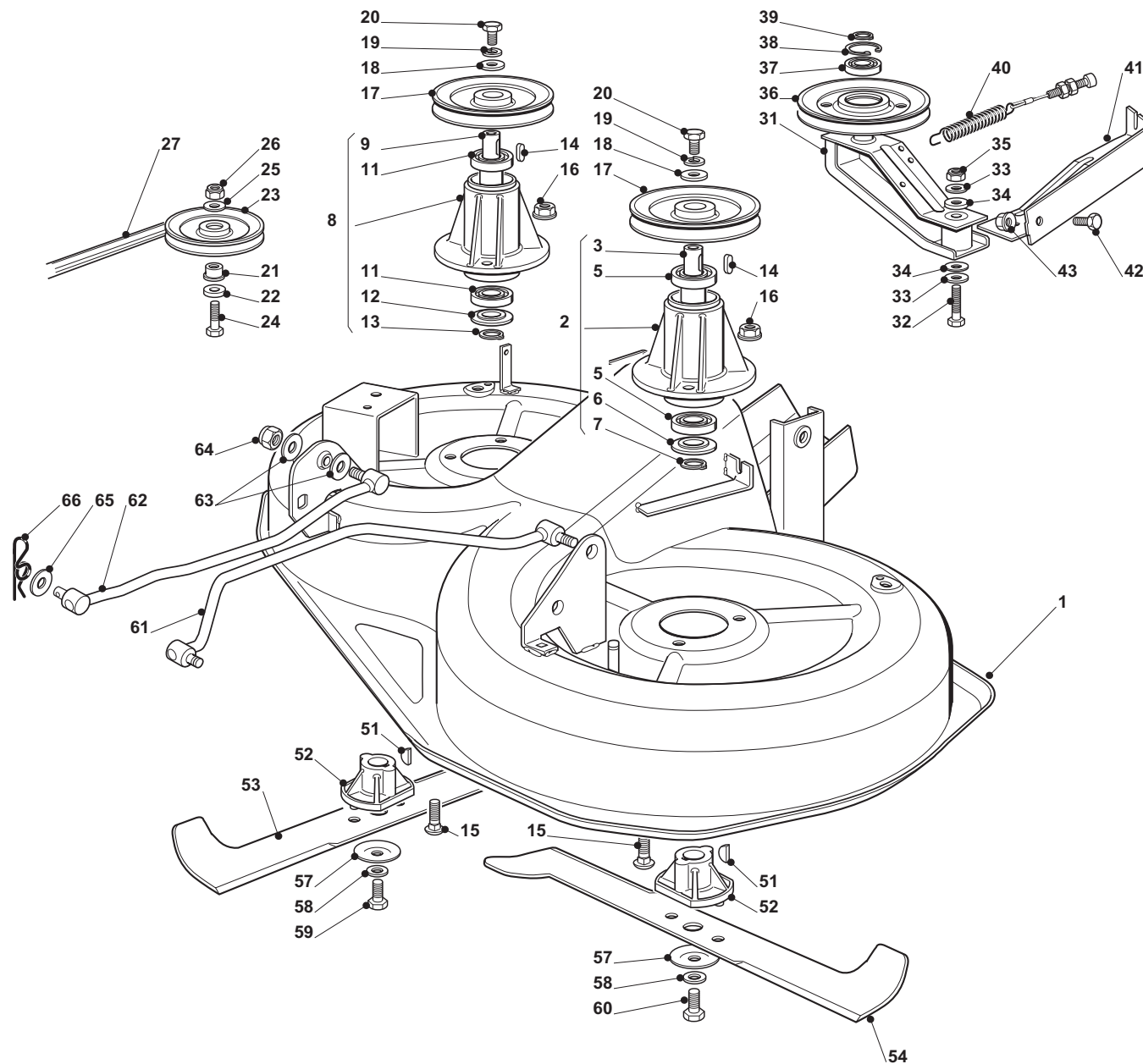
TM9214 (2015-2017),
TM9214H (2015-2018)

8

SCHNEIDWERKZEUG (1)
CUTTING PLATE (1)



| Seite / Page | Pos. | TM9214 (2015-2017) | TM9214H (2015-2018) | Teil-Nr. Part No. | Hinweise Notes | Bezeichnung | Spezifikation Specification | Description |
|--------------|------|--------------------|---------------------|----------------------|-------------------|------------------------|--------------------------------|-----------------------|
| 8 | 1 | 1 | 1 | 664028512 | | GEHÄUSE | | CASE |
| 8 | 2 | 1 | 1 | 664028513 | | GEHÄUSE | | CASE |
| 8 | 3 | 6 | 6 | 664735120 | | SCHRAUBE | | SCREW |
| 8 | 4 | 4 | 4 | 664028514 | | SCHRAUBE | | SCREW |
| 8 | 5 | 1 | 1 | 664028515 | | SCHELLE | | BRACKET |
| 8 | 6 | 1 | 1 | 664028516 | | SCHELLE | | BRACKET |
| 8 | 7 | 1 | 1 | 664028517 | | WASSERANSCHLUSS | | WATER HOSE CONNECTION |
| 8 | 8 | 1 | 1 | 664000970 | | SPRENGRING | | SNAP RING |
| 8 | 9 | 2 | 2 | 664028518 | | WASSERANSCHLUSS | | WATER HOSE CONNECTION |
| 8 | 10 | 2 | 2 | 664500030 | | NIET | | RIVET |
| 8 | 11 | 1 | 1 | 664028519 | | VERBINDUNGSROHR | | CONNECTING TUBE |
| 8 | 12 | 1 | 1 | 664028520 | | VERBINDUNGSROHR | | CONNECTING TUBE |
| 8 | 13 | 6 | 6 | 664160039 | | DISTANZSTÜCK | | SPACER |
| 8 | 21 | 1 | 1 | 664028521 | | GEHÄUSE | | CASE |
| 8 | 22 | 2 | 2 | 664791400 | | SCHRAUBE | | SCREW |
| 8 | 23 | 2 | 2 | 664154510 | | MUTTER | | NUT |
| 8 | 24 | 2 | 2 | 664160039 | | DISTANZSTÜCK | | SPACER |
| 8 | 32 | 1 | 1 | 664108008 | | AUSWURF BLECHSATZ KPL. | | EXIT CONVEYOR A CPL. |
| 8 | 33 | 2 | 2 | 664774373 | | HALTER | | BRACKET |



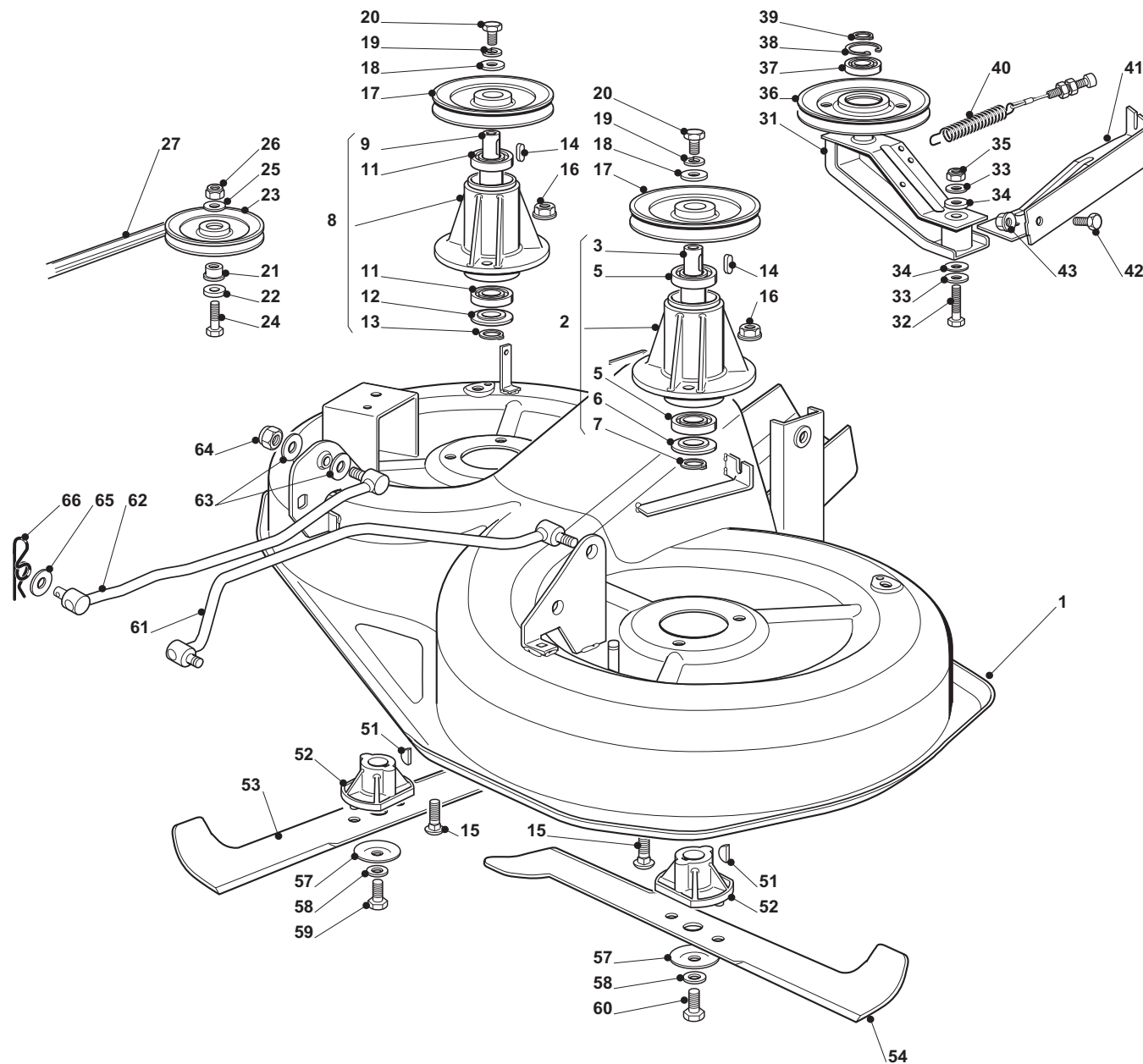
TM9214 (2015-2017),
TM9214H (2015-2018)

9

SCHNEIDWERKZEUG (2)
CUTTING PLATE (2)



| Seite / Page | Pos. | TM9214 (2015-2017) | TM9214H (2015-2018) | Teil-Nr. Part No. | Hinweise Notes | Bezeichnung | Spezifikation Specification | Description |
|--------------|------|--------------------|---------------------|----------------------|-------------------|--------------------|--------------------------------|-----------------------|
| 9 | 1 | 1 | 1 | 664564075 | | MÄHDECK | | PLATE |
| 9 | 2 | 1 | 1 | 664207202 | | NABE LINKS KPL. | INC. 3,5-7 | FLANGE ASS.Y |
| 9 | 3 | 1 | 1 | 664020802 | | WELLE | | SHAFT |
| 9 | 5 | 2 | 2 | 664216047 | | KUGELLAGER | | BALL BEARING |
| 9 | 6 | 1 | 1 | 664160501 | | STAUBSCHUTZSCHEIBE | | DUST COVER |
| 9 | 7 | 1 | 1 | 664609260 | | SICHERUNGSRING | | RETAINING RING |
| 9 | 8 | 1 | 1 | 664207203 | | NABE RECHTS KPL. | INC. 9,11-13 | FLANGE ASS.Y |
| 9 | 9 | 1 | 1 | 664020803 | | WELLE | | SHAFT |
| 9 | 11 | 2 | 2 | 664216047 | | KUGELLAGER | | BALL BEARING |
| 9 | 12 | 1 | 1 | 664160501 | | STAUBSCHUTZSCHEIBE | | DUST COVER |
| 9 | 13 | 1 | 1 | 664609260 | | SICHERUNGSRING | | RETAINING RING |
| 9 | 14 | 2 | 2 | 664139480 | | KEIL | | KEY |
| 9 | 15 | 6 | 6 | 664818700 | => 2017 | SCHRAUBE | | SCREW |
| 9 | 15 | 6 | 6 | 664082516 | 2018 => | SCHRAUBE | | SCREW |
| 9 | 16 | 6 | 6 | 664154210 | | MUTTER | | NUT |
| 9 | 17 | 2 | 2 | 664601563 | | RIEMENSCHLEIFE | | PULLEY |
| 9 | 18 | 2 | 2 | 664670007 | | SCHEIBE | | WASHER |
| 9 | 19 | 2 | 2 | 664583500 | | FEDERRING | | GROWER |
| 9 | 20 | 2 | 2 | 664793102 | | SCHRAUBE | | SCREW |
| 9 | 21 | 1 | 1 | 664028522 | | DISTANZBUCHSE | | SPACER |
| 9 | 22 | 1 | 1 | 664670007 | | SCHEIBE | | WASHER |
| 9 | 23 | 1 | 1 | 664028523 | | RIEMENSCHLEIFE | | PULLEY |
| 9 | 24 | 1 | 1 | 664691115 | | SCHRAUBE | | SCREW |
| 9 | 25 | 1 | 1 | 664523060 | | SCHEIBE | | WASHER |
| 9 | 26 | 1 | 1 | 664155000 | | MUTTER | | NUT |
| 9 | 27 | 1 | 1 | 664061508 | | KEILRIEMEN | | V-BELT |
| 9 | 31 | 1 | 1 | 664318141 | | HEBEL | | LEVER |
| 9 | 32 | 1 | 1 | 664691700 | | SCHRAUBE | | SCREW |
| 9 | 33 | 2 | 2 | 664523070 | | SCHEIBE | | WASHER |
| 9 | 34 | 2 | 2 | 664672152 | | SCHEIBE | | WASHER |
| 9 | 35 | 1 | 1 | 664155000 | | MUTTER | | NUT |
| 9 | 36 | 1 | 1 | 664601564 | | RIEMENSCHLEIFE | | PULLEY |
| 9 | 37 | 1 | 1 | 664216048 | | KUGELLAGER | | BEARING |
| 9 | 38 | 1 | 1 | 664610800 | | SPRENGRING | | SNAP RING |
| 9 | 39 | 1 | 1 | 664609200 | | SICHERUNGSRING | | RETAINING RING |
| 9 | 40 | 1 | 1 | 664004618 | | BOWDENZUG | | CONTROL CABLE |
| 9 | 41 | 1 | 1 | 664774215 | | ANBINDUNGSBLECH | | BRACKET |
| 9 | 42 | 1 | 1 | 664792611 | | SCHRAUBE | | SCREW |
| 9 | 43 | 1 | 1 | 664293201 | | MUTTER | | NUT |
| 9 | 51 | 2 | 2 | 664139100 | | KEIL | | KEY |
| 9 | 52 | 2 | 2 | 664463200 | | MESSERHALTER | | BLADE HUB |
| 9 | 53 | 1 | 1 | 664004345 | | FANGMESSER RECHTS | | BLADE (COLLECT) RIGHT |



TM9214 (2015-2017),
TM9214H (2015-2018)

9

SCHNEIDWERKZEUG (2)
CUTTING PLATE (2)

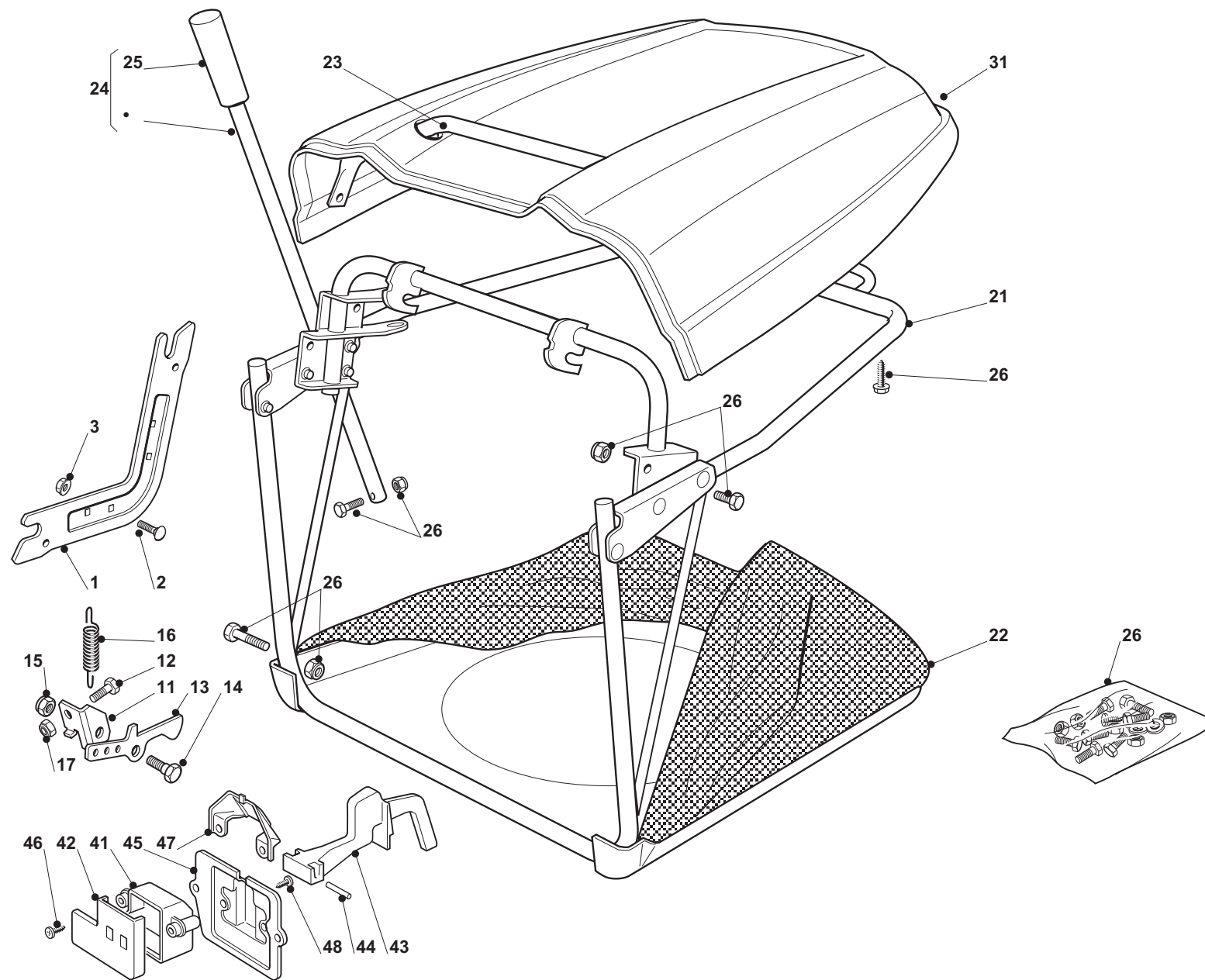


| Seite / Page | Pos. | TM9214 (2015-2017) | | Teil-Nr. Part No. | Hinweise Notes | Bezeichnung | Spezifikation Specification | Description |
|--------------|------|--------------------|---|----------------------|-------------------|--------------------|--------------------------------|---------------------------------|
| | | | | | | | | |
| 9 | 53 | 1 | 1 | 664004354 | ACC. | MULCHMESSER RECHTS | | BLADE (COLLECT AND MULCH) RIGHT |
| 9 | 54 | 1 | 1 | 664004344 | | FANGMESSER LINKS | | BLADE (COLLECT) LEFT |
| 9 | 54 | 1 | 1 | 664004353 | ACC. | MULCHMESSER LINKS | | BLADE (COLLECT AND MULCH) LEFT |
| 9 | 57 | 2 | 2 | 664160400 | | FEDERSCHEIBE | | ELASTIC WASHER |
| 9 | 58 | 2 | 2 | 664523080 | | SCHEIBE | | WASHER |
| 9 | 59 | 1 | 1 | 664735695 | | SCHRAUBE | L | SCREW |
| 9 | 60 | 1 | 1 | 664735694 | | SCHRAUBE | R | SCREW |
| 9 | 61 | 1 | 1 | 664000535 | | KIPPHEBEL | | EQUALIZER |
| 9 | 62 | 1 | 1 | 664000533 | | KIPPHEBEL | | EQUALIZER |
| 9 | 63 | 4 | 4 | 664670008 | | SCHEIBE | | WASHER |
| 9 | 64 | 2 | 2 | 664156602 | | MUTTER | | NUT |
| 9 | 65 | 2 | 2 | 664670008 | | SCHEIBE | | WASHER |
| 9 | 66 | 2 | 2 | 664487998 | | SPLINT | | COTTER PIN |

TM9214 (2015-2017),
TM9214H (2015-2018)

10

Grasfangsack
GRASS CATCHER



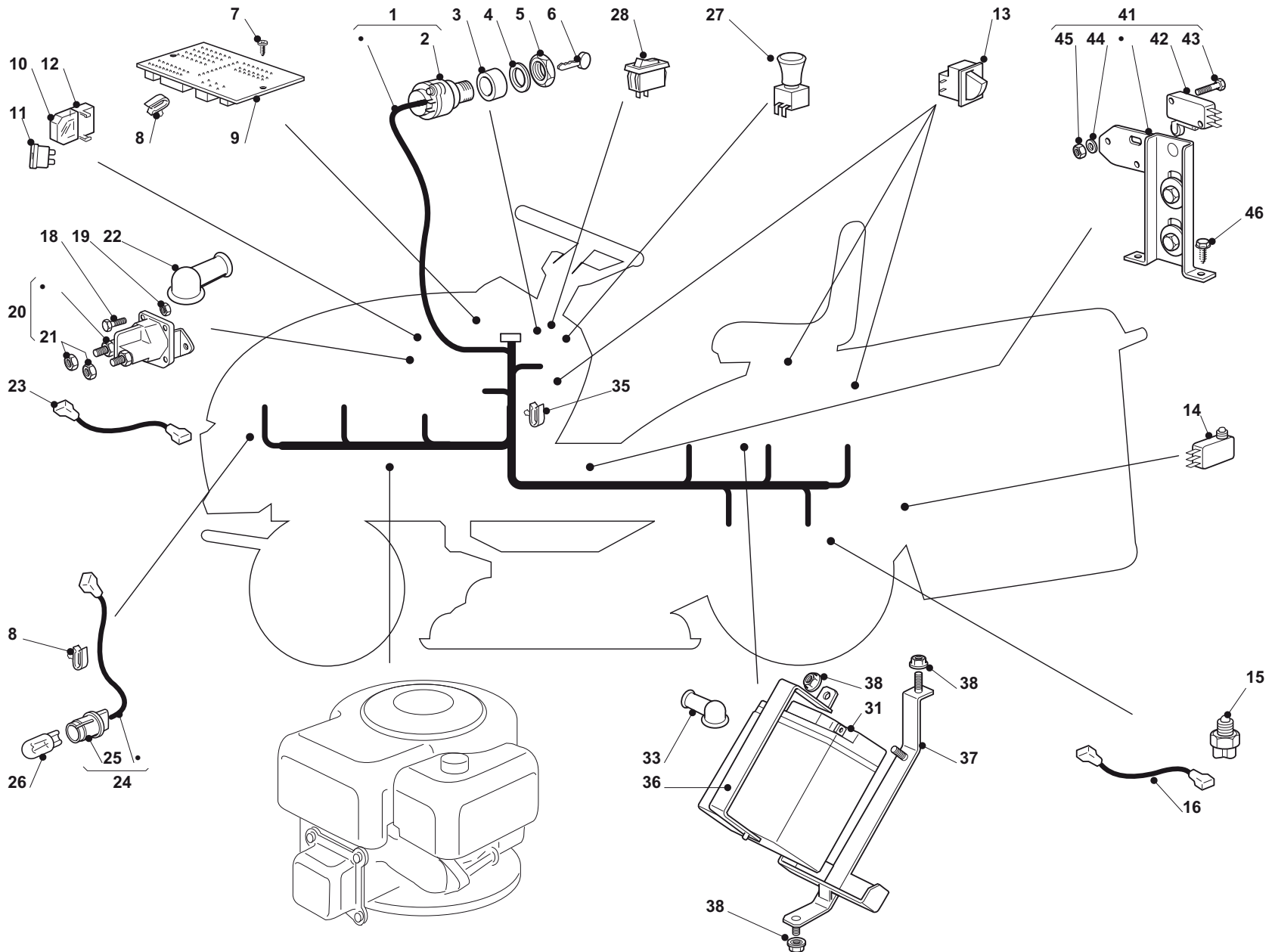
TM9214 (2015-2017),
TM9214H (2015-2018)

10

Grasfangsack
GRASS CATCHER

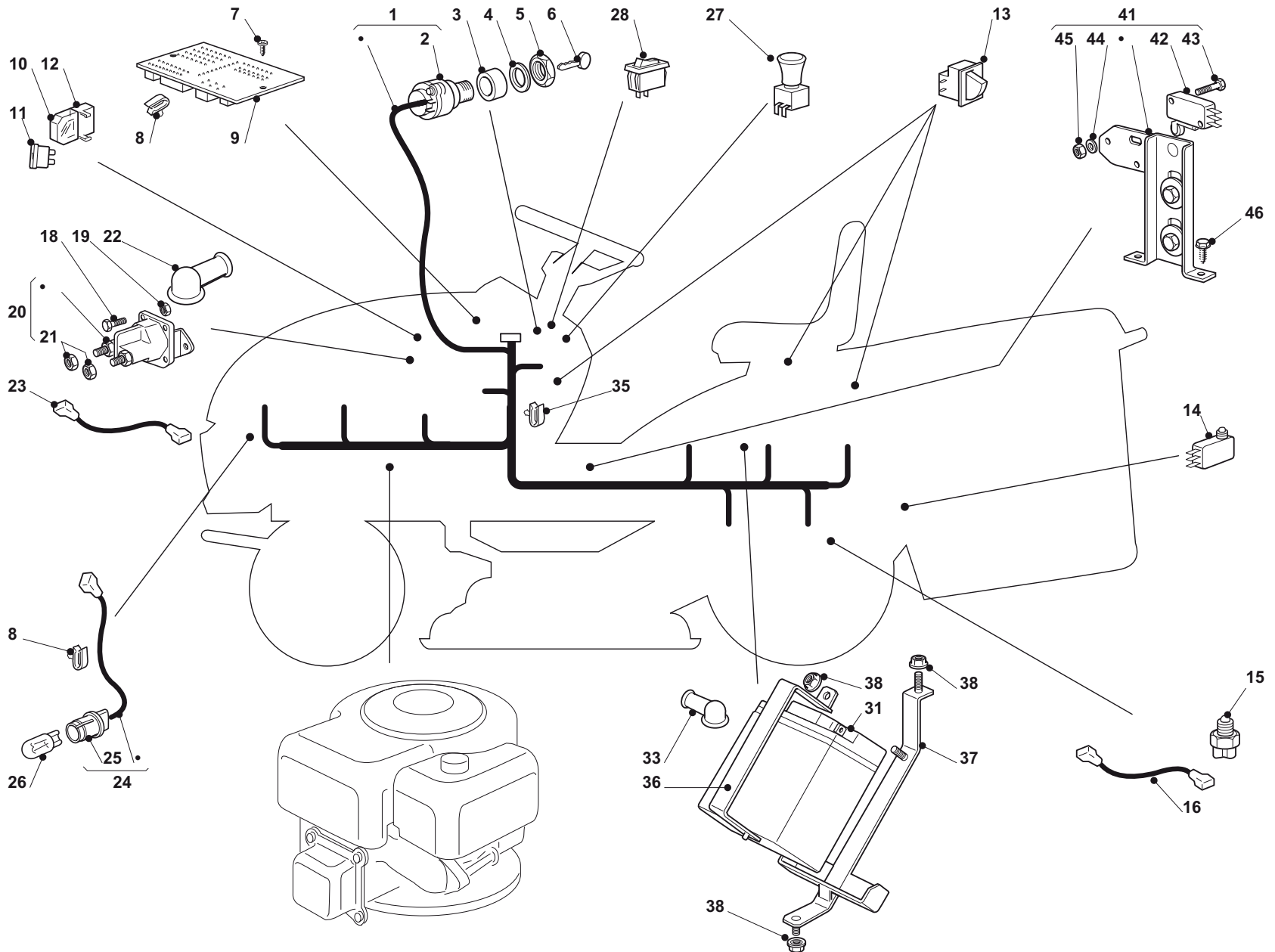


| Seite / Page | Pos. | TM9214 (2015-2017) | TM9214H (2015-2018) | Teil-Nr. Part No. | Hinweise Notes | Bezeichnung | Spezifikation Specification | Description |
|--------------|------|--------------------|---------------------|----------------------|-------------------|---------------------|--------------------------------|------------------|
| 10 | 1 | 2 | 2 | 664785275 | | HALTER | | SUPPORT |
| 10 | 2 | 4 | 4 | 664818690 | => 2017 | SCHRAUBE | | SCREW |
| 10 | 2 | 4 | 4 | 664082016 | 2018 => | SCHRAUBE | | SCREW |
| 10 | 3 | 4 | 4 | 664293201 | | MUTTER | | NUT |
| 10 | 11 | 1 | 1 | 664028524 | | WINKEL | | BRACKET |
| 10 | 12 | 1 | 1 | 664789000 | | SCHRAUBE | | SCREW |
| 10 | 13 | 1 | 1 | 664774315 | | HALTER | | BRACKET |
| 10 | 14 | 1 | 1 | 664510080 | => 2017 | BOLZEN | | PIN |
| 10 | 14 | 1 | 1 | 664100802 | 2018 => | BOLZEN | | PIN |
| 10 | 15 | 1 | 1 | 664292102 | | MUTTER | | NUT |
| 10 | 16 | 1 | 1 | 664450432 | | FEDER | | SPRING |
| 10 | 17 | 1 | 1 | 664154330 | | MUTTER | | NUT |
| 10 | 21 | 1 | 1 | 664800111 | | VORDERRAHMEN | | FRONT FRAME |
| 10 | 22 | 1 | 1 | 664105973 | | GRASFANGSACK | | GRASS CATCHER |
| 10 | 23 | 1 | 1 | 664998003 | | VORDERGRIFF | | HANDLE |
| 10 | 24 | 1 | 1 | 664869023 | | STANGE | INC. 25 | ROD |
| 10 | 25 | 1 | 1 | 664999508 | | GRIFF | | HANDLE |
| 10 | 26 | 1 | 1 | 664180048 | | SCHRAUBENAUSRÜSTUNG | | SCREWS OUTFIT |
| 10 | 31 | 1 | 1 | 664110328 | | HAUBE, ROT | | COVER, RED |
| 10 | 41 | 1 | 1 | 664600041 | | SCHUTZ | | PROTECTION |
| 10 | 42 | 1 | 1 | 664600042 | | SCHUTZDECKEL | | PROTECTION COVER |
| 10 | 43 | 1 | 1 | 664318124 | | HEBEL | | LEVER |
| 10 | 44 | 1 | 1 | 664400030 | | BOLZEN | | PIN |
| 10 | 45 | 1 | 1 | 664785272 | => 2017 | SCHUTZ | | PROTECTION |
| 10 | 45 | 1 | 1 | 664852721 | 2018 => | SCHUTZ | | PROTECTION |
| 10 | 46 | 1 | 1 | 664728510 | | SCHRAUBE | | SCREW |
| 10 | 47 | 1 | 1 | 664600048 | | ABWEISERDECKEL | | DEFLECTOR COVER |
| 10 | 48 | 2 | 2 | 664735110 | | SCHRAUBE | | SCREW |





| Seite / Page | Pos. | TM9214 (2015-2017) | TM9214H (2015-2018) | Teil-Nr. Part No. | Hinweise Notes | Bezeichnung | Spezifikation Specification | Description |
|--------------|------|--------------------|---------------------|----------------------|-------------------|------------------------|--------------------------------|--------------------------|
| 11 | 1 | 1 | 1 | 664028525 | | KABELSATZ | INC. 2 | CABLES |
| 11 | 2 | 1 | 1 | 664450072 | | SCHALTER | | STARTING SWITCH |
| 11 | 3 | 1 | 1 | 664550136 | | DISTANZRING | | SPACER |
| 11 | 4 | 1 | 1 | 664550135 | | SCHEIBE | | WASHER |
| 11 | 5 | 1 | 1 | 664400862 | | NUTMUTTER | | RING NUT |
| 11 | 6 | 1 | 1 | 664210022 | | SCHLÜSSEL FÜR START | | STARTING KEY |
| 11 | 7 | 3 | 3 | 664727810 | | SCHRAUBE | | SCREW |
| 11 | 8 | 2 | 2 | 664320506 | | KABELBEFESTIGUNG | | FAIRLEAD |
| 11 | 9 | 1 | 1 | 664028526 | | ELEKTRONISCHE KARTE | | ELECTRONIC CARD |
| 11 | 10 | 2 | 2 | 664215000 | | DECKEL | | COVER |
| 11 | 11 | 1 | 1 | 664340036 | | SICHERUNG | 25A | FUSE |
| 11 | 11 | 1 | 1 | 664340040 | | SICHERUNG | 10A | FUSE |
| 11 | 12 | 2 | 2 | 664500007 | | SICHERUNGHALTER | | FUSE CARRIER |
| 11 | 13 | 3 | 3 | 664410613 | | MIKROSCHALTER | | MICRO SWITCH |
| 11 | 14 | 1 | 1 | 664410605 | | FÜLLHÖHENSCHALTER | | FULL GRASS CATCHER MICRO |
| 11 | 15 | 1 | | 664410608 | | MIKROSCHALTER LEERLAUF | | SWITCH |
| 11 | 16 | 1 | | 664065026 | | KABEL | | CABLE |
| 11 | 18 | 2 | 2 | 664791213 | | SCHRAUBE | | SCREW |
| 11 | 19 | 2 | 2 | 664292102 | | MUTTER | | NUT |
| 11 | 20 | 1 | 1 | 664736110 | => 2017 | ANLASSRELAIS | INC. 21 | STARTER RELAY |
| 11 | 20 | 1 | 1 | 664736113 | 2018 => | ANLASSRELAIS | INC. 21 | STARTER RELAY |
| 11 | 21 | 2 | 2 | 664945131 | | MUTTER | | NUT |
| 11 | 22 | 1 | 1 | 664564864 | | STECKER | | CONNECTOR |
| 11 | 23 | 1 | 1 | 664065017 | | KABEL | | CABLE |
| 11 | 24 | 1 | 1 | 664040073 | | KABEL | DELI TIRE INC. 25 | CABLE |
| 11 | 25 | 2 | 2 | 664999030 | | LAMPENFASSUNG | | LAMP SOCKET |
| 11 | 26 | 2 | 2 | 664459100 | | LAMPE HALOGEN | | LAMP, HALOGEN |
| 11 | 27 | 1 | 1 | 664450068 | | KUPPLUNGSSCHALTER | | CLUTCH SWITCH |
| 11 | 28 | 1 | 1 | 664450060 | => 2017 | LICHTSCHALTER | | SWITCH |
| 11 | 28 | 1 | 1 | 664500601 | 2018 => | LICHTSCHALTER | | FARILAMP SWITCH |
| 11 | 31 | 1 | 1 | 664120002 | | BATTERIE | | BATTERY |
| 11 | 33 | 1 | 1 | 664564861 | => 2017 | STECKER | | PROTECTION |
| 11 | 33 | 1 | 1 | 664648612 | 2018 => | STECKER | | PROTECTION |
| 11 | 35 | 9 | 9 | 664320506 | | KABELBEFESTIGUNG | | FAIRLEAD |
| 11 | 36 | | 1 | 664772099 | | BATTERIEHALTER | | CLAMP |
| 11 | 37 | | 1 | 664785191 | | BATTERIEHALTER | | BATTERY SUPPORT |
| 11 | 38 | | 3 | 664155000 | | MUTTER | | NUT |
| 11 | 41 | | 1 | 664394853 | => 2017 | MIKROSCHALTER SATZ | HYDRO INC. 42-45 | MICRO SWITCH SET |
| 11 | 41 | | 1 | 664948530 | 2018 => | MIKROSCHALTER-SET | HYDRO INC. 42-45 | MICRO SWITCH SET |
| 11 | 42 | | 1 | 664410609 | | MIKROSCHALTER LEERLAUF | | SWITCH |
| 11 | 43 | | 2 | 664735602 | | SCHRAUBE | | SCREW |
| 11 | 44 | | 2 | 664581100 | | FEDERRING | | SPRING RING |



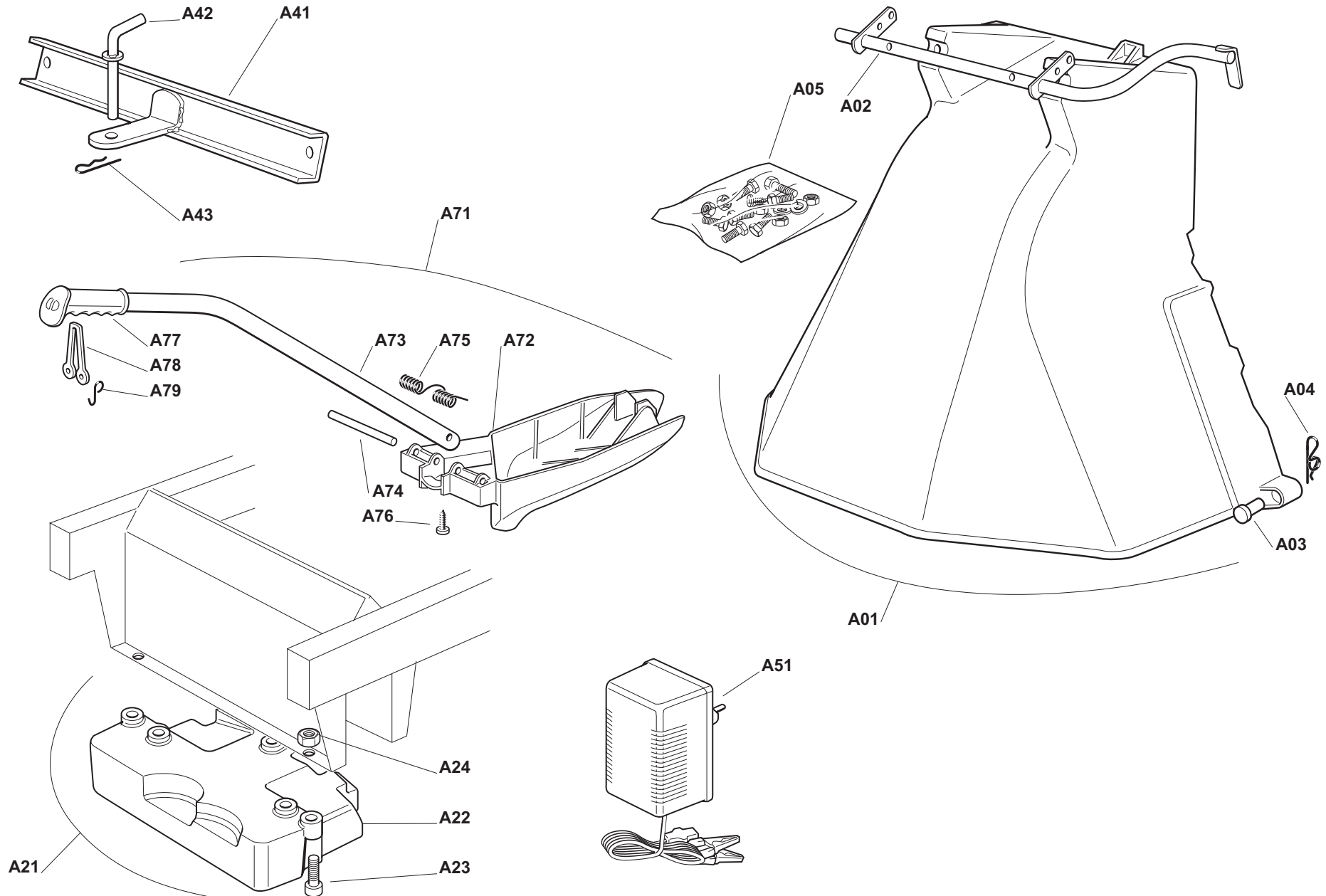
TM9214 (2015-2017),
TM9214H (2015-2018)

11

ELEKTRISCHE TEILE
ELECTRICAL PARTS

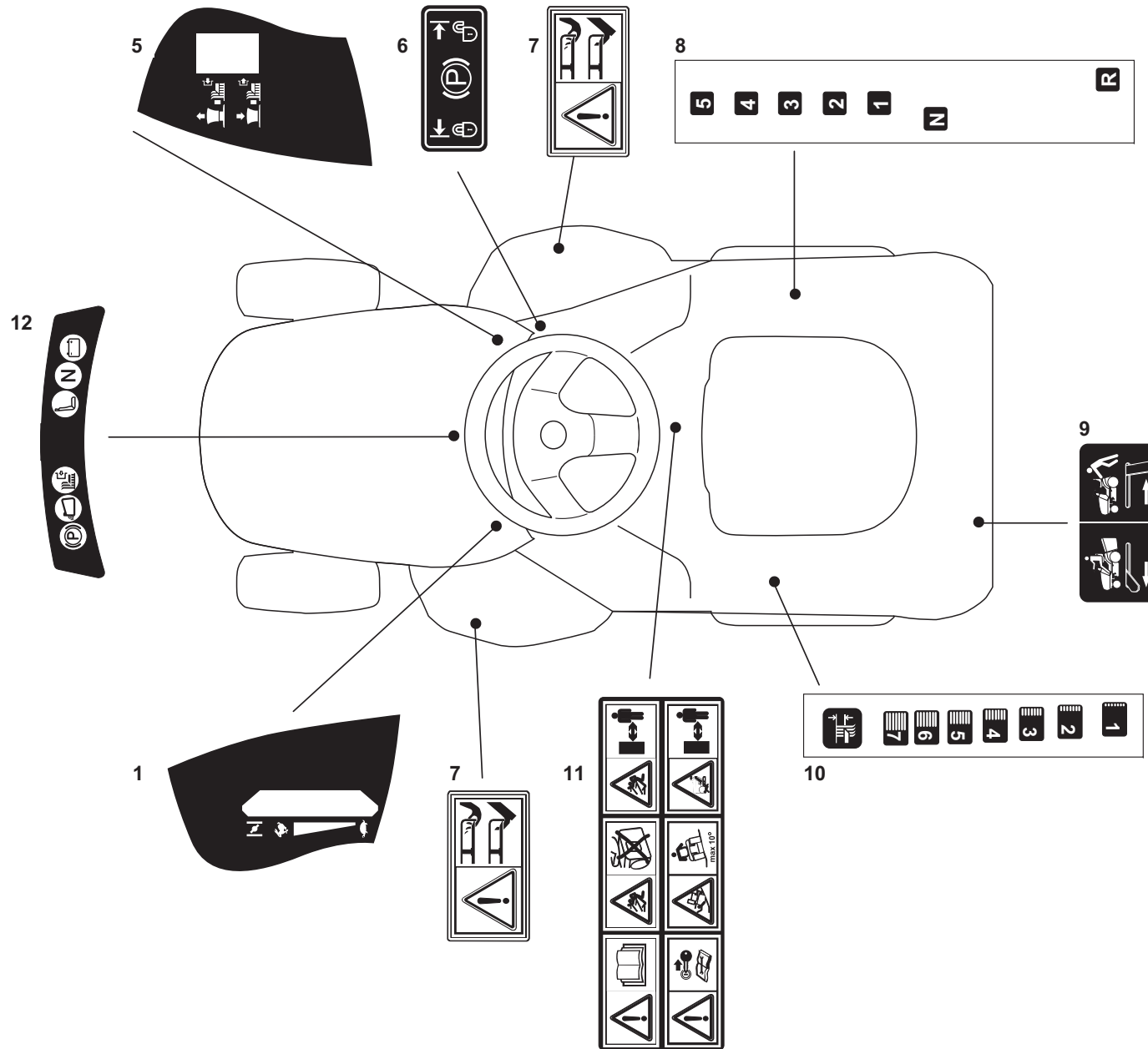


| Seite / Page | Pos. | Teil-Nr. Part No. | Hinweise Notes | Bezeichnung | Spezifikation Specification | Description |
|--------------|------|----------------------|-------------------|-------------|--------------------------------|-------------|
| 11 | 45 | 2 664290791 | | MUTTER | | NUT |
| 11 | 46 | 2 664735110 | | SCHRAUBE | | SCREW |





| Seite / Page | Pos. | TM9214 (2015-2017) | TM9214H (2015-2018) | Teil-Nr. Part No. | Hinweise Notes | Bezeichnung | Spezifikation Specification | Description |
|--------------|------|--------------------|---------------------|----------------------|-------------------|--------------------------|--------------------------------|---------------------------|
| 12 | A01 | 1 | 1 | 664900051 | | DEFLEKTORHAUBE | INC. A02-A05 | KIT PROTECTION SORTIE |
| 12 | A02 | 1 | 1 | 664999035 | | HALTER | | SUPPORT |
| 12 | A03 | 2 | 2 | 664510022 | | BOLZEN | | PIN |
| 12 | A04 | 2 | 2 | 664487998 | | SPLINT | | COTTER PIN |
| 12 | A05 | 1 | 1 | 664180062 | | SCHRAUBENAUSRÜSTUNG KPL. | | SCREWS OUTFIT |
| 12 | A05 | 2 | 2 | 664155000 | | MUTTER | | NUT |
| 12 | A05 | 2 | 2 | 664691100 | | SCHRAUBE | | SCREW |
| 12 | A05 | 2 | 2 | 664487998 | | SPLINT | | COTTER PIN |
| 12 | A05 | 2 | 2 | 664566112 | | GUMMISTOPFEN | | CAP |
| 12 | A05 | 2 | 2 | 664689515 | | SCHRAUBE | | SCREW |
| 12 | A05 | 2 | 2 | 664154510 | | MUTTER | | NUT |
| 12 | A05 | 2 | 2 | 664510022 | | BOLZEN | | PIN |
| 12 | A21 | 1 | 1 | 664900030 | | FRONTGEWICHT KPL. | 72-92-102-122 INC. A22-A24 | FRONT WEIGHT KIT |
| 12 | A22 | 1 | 1 | 664519997 | | FRONTGEWICHT | 72-92-102-122 | FRONT WEIGHT |
| 12 | A23 | 3 | 3 | 664760520 | | SCHRAUBE | | SCREW |
| 12 | A24 | 3 | 3 | 664155000 | | MUTTER | | NUT |
| 12 | A41 | 1 | 1 | 664900084 | | ANHÄNGERKUPPLUNG | | TRAILER HITCH KIT |
| 12 | A42 | 1 | 1 | 664510021 | | BOLZEN | | PIN |
| 12 | A43 | 1 | 1 | 664487999 | | SPLINT | | COTTER PIN |
| 12 | A51 | 1 | 1 | 664180091 | | LADEGERÄT | U.K. | BATTERY CHARGER |
| 12 | A51 | 1 | 1 | 664180050 | | LADEGERÄT | EU (SCHUKO) | BATTERY CHARGER |
| 12 | A71 | 1 | 1 | 664900138 | ACC. | MULCHKEIL&MULCHMESSER | 92 cm INC. A72-A76 | KIT MULCHING (INCL. LAME) |
| 12 | A71 | 1 | 1 | 664900038 | | MULCHKEIL | INC. A72-A76 | KIT MULCHING |
| 12 | A72 | 1 | 1 | 664140093 | | ABWEISER | | DEFLECTOR |
| 12 | A73 | 1 | 1 | 664394007 | | STIEL | | HANDLE |
| 12 | A74 | 1 | 1 | 664510077 | | BOLZEN | | PIN |
| 12 | A75 | 1 | 1 | 664430245 | | FEDER | | SPRING |
| 12 | A76 | 1 | 1 | 664735410 | | SCHRAUBE | | SCREW |
| 12 | A77 | 1 | 1 | 664280000 | | GRIFF | | HANDGRIP |
| 12 | A78 | 1 | 1 | 664840011 | | GUMMIZUG | | ELASTIC TIE-ROD |
| 12 | A79 | 2 | 2 | 664253004 | | HAKEN | | HOOK |



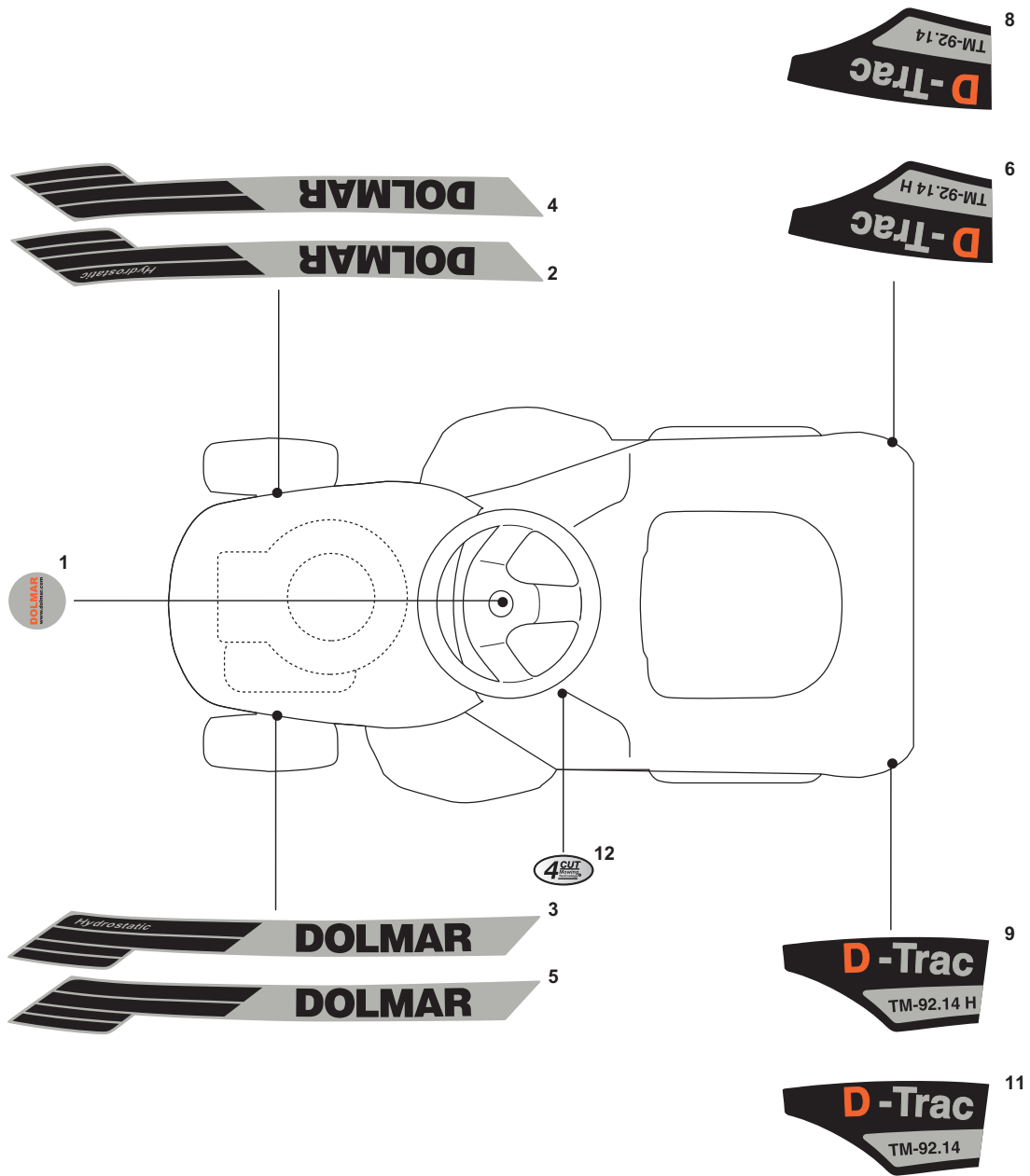
TM9214 (2015-2017),
TM9214H (2015-2018)

13

AUFKLEBER
LABELS



| Seite / Page | Pos. | TM9214 (2015-2017) | | Teil-Nr. Part No. | Hinweise Notes | Bezeichnung | Spezifikation Specification | Description |
|--------------|------|--------------------|---|----------------------|-------------------|---------------------------------|--------------------------------|----------------------------|
| | | | | | | | | |
| 13 | 1 | 1 | 1 | 664361440 | | SCHILD, MOTORFERNBEDIENUNG | | LABEL, THROTTLE |
| 13 | 5 | 1 | 1 | 664361439 | | SCHILD, MESSERKUPPLUNG | | LABEL, KNIFE COUPLING |
| 13 | 6 | 1 | 1 | 664361452 | | SCHILD, PARKBREMSE | | LABEL, PARKING BRAKE |
| 13 | 7 | 2 | 2 | 664356699 | | SCHILD SICHERHEITSHINWEISE | | LABEL, SAFETY INSTRUCTIONS |
| 13 | 8 | 1 | | 664361447 | | SCHILD, GANGSCHALTUNG | | LABEL, SPEED DRIVE CONTROL |
| 13 | 9 | | 1 | 664361451 | | SCHILD BEDIENHINWEISE | | LABEL, CAUTION |
| 13 | 10 | 1 | 1 | 664361441 | | SCHILD, SCHNITTHÖHENVERSTELLUNG | | LABEL, HEIGHT ADJUSTMENT |
| 13 | 11 | 1 | 1 | 664361553 | | SCHILD SICHERHEITSHINWEISE | | LABEL, SAFETY INSTRUCTIONS |
| 13 | 12 | 1 | 1 | 664420020 | | SCHILD BEDIENHINWEISE | | LABEL |



TM9214 (2015-2017),
TM9214H (2015-2018)

14

AUFKLEBER
LABELS



| Seite / Page | Pos. | TM9214 (2015-2017) | TM9214H (2015-2018) | Teil-Nr. Part No. | Hinweise Notes | Bezeichnung | Spezifikation Specification | Description |
|--------------|------|--------------------|---------------------|----------------------|-------------------|-------------|--------------------------------|-------------|
| 14 | 1 | 1 | 1 | 664361485 | | SCHILD | DOLMAR | LABEL |
| 14 | 2 | | | 664362510 | | SCHILD | DOLMAR | LABEL |
| 14 | 3 | | | 664362511 | | SCHILD | DOLMAR | LABEL |
| 14 | 4 | 1 | | 664362508 | | SCHILD | DOLMAR | LABEL |
| 14 | 5 | 1 | | 664362509 | | SCHILD | DOLMAR | LABEL |
| 14 | 6 | | 1 | 664362514 | | SCHILD | TM-92.14 H | LABEL |
| 14 | 8 | 1 | | 664362516 | | SCHILD | TM-92.14 | LABEL |
| 14 | 9 | | 1 | 664362515 | | SCHILD | TM-92.14 H | LABEL |
| 14 | 11 | 1 | | 664362517 | | SCHILD | TM-92.14 | LABEL |
| 14 | 12 | 1 | 1 | 664999576 | | SCHILD | 4 CUT | LABEL |

TM9214 (2015-2017),
TM9214H (2015-2018)



| | Zeichenerklärung | Key to symbols |
|--|--|---|
| => 1999999 2000000 => 2003.04 => TI 2003/07 Acc. = { m Corr. | Produktion bis Serien-Nr. Neues Teil ab Serien-Nr. Neues Teil ab Jahr / Monat Siehe Technische Information Jahr / Nr. Zubehör (nicht im Lieferumfang) Keine Serienausführung, jedoch verwendbar Beinhaltet Positions-Nr. Meterware Druckfehlerberichtigung | Production to serial number New part from serial number New part from Year / Month See Technical Information Year / No. Accessories (not included in the delivery inventory) No standard execution, may be used Contains item number Sold by the meter Error correction |
| | Änderungen vorbehalten | Specifications subject to change without notice |