

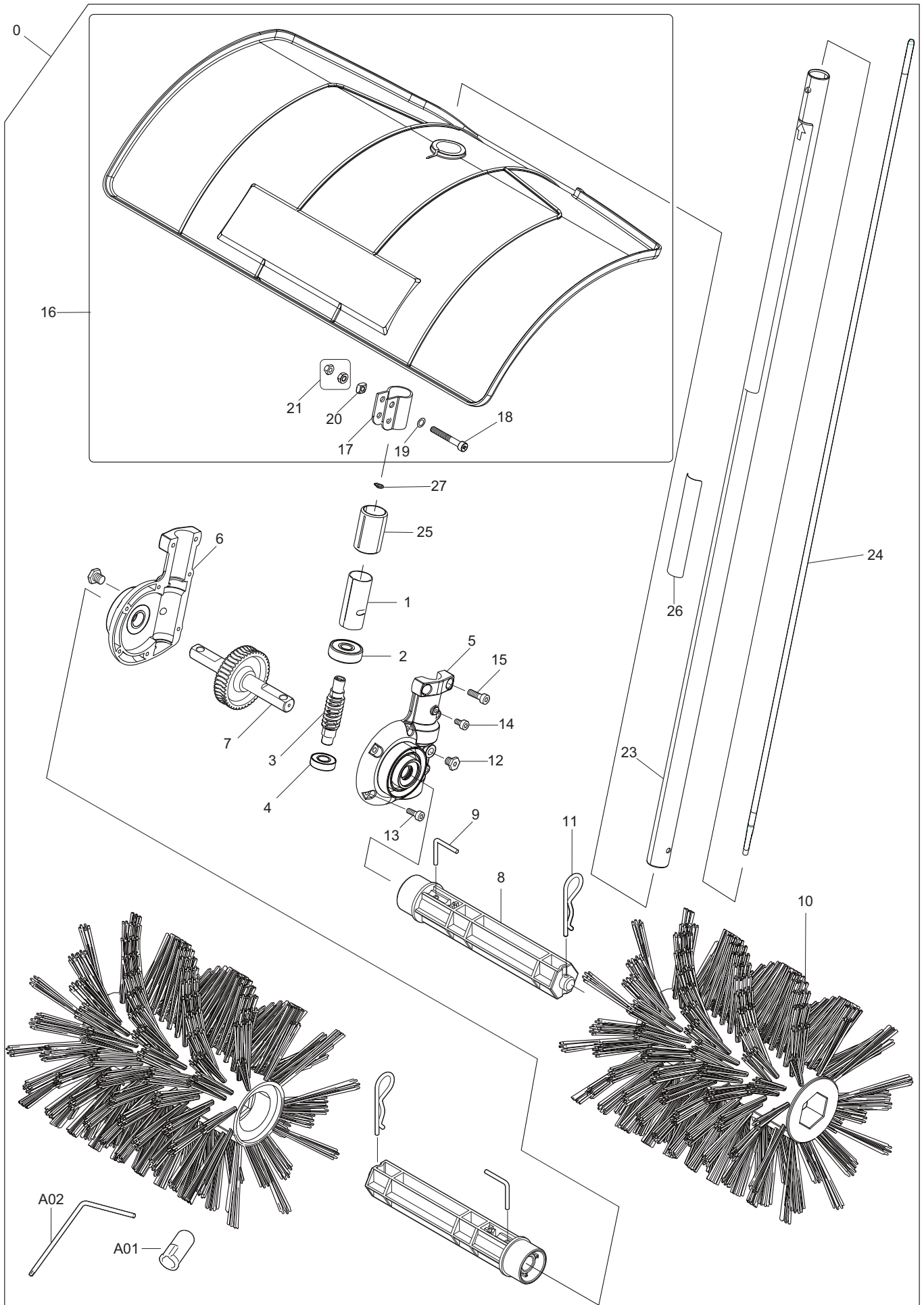


Ersatzteilliste
Spare Parts List

2018-07

MB-CS
BR400MP

MB-CS, BR400MP (D, GB)



| Seite / Page | Pos. | MB-CS BR400MP | Teil-Nr. Part No. | Hinweise Notes | Bezeichnung | Spezifikation Specification | Description |
|--------------|------|------------------|----------------------|-------------------|-----------------------|--------------------------------|-------------------------|
| 1 | 0 | 1 | 199335-5 | | KEHRBÜRSTENAUFSATZ | MB-CS | POWER BRUSH ATTACHEMENT |
| 1 | 0 | 1 | 199318-5 | | KEHRBÜRSTENAUFSATZ | BR400MP | POWER BRUSH ATTACHEMENT |
| 1 | 1 | 1 | XNR0000519 | | HÜLSE | | COLLAR |
| 1 | 2 | 1 | XNR0000520 | | RILLENKUGELLAGER | 6301LL | BALL BEARING |
| 1 | 3 | 1 | XNR0000521 | | ANTRIEBSSCHNECKE KPL. | | WORM COMPLETE |
| 1 | 4 | 1 | XNR0000052 | | RILLENKUGELLAGER | #6001ZZ | BALL BEARING |
| 1 | 5 | 1 | XNR0000536 | | GETRIEBEGEHÄUSE A | | WORM CASE A COMPL |
| 1 | 6 | 1 | XNR0000537 | | GETRIEBEGEHÄUSE B | | WORM CASE B COMPL |
| 1 | 7 | 1 | XNR0000544 | | GETRIEBERAD KPL. | | WHEEL COMPLETE |
| 1 | 8 | 2 | XNR0000547 | | ACHSWELLE | | AXLE SHAFT |
| 1 | 9 | 2 | XNR0000546 | | WINKELSTIFT | | PIN L |
| 1 | 10 | 2 | XNR0000548 | | KEHRBÜRSTE | | BRUSH COMPLETE |
| 1 | 11 | 2 | XNR0000545 | | SPLINT | | PIN R |
| 1 | 12 | 2 | XNR0000495 | | SCHRAUBE | | BOLT |
| 1 | 13 | 6 | XNR0000529 | | SCHRAUBE | M5x15 | H.L.SOCKET HEAD BOLT |
| 1 | 14 | 1 | XNR0000528 | | SCHRAUBE | M5x10 | H.L.SOCKET HEAD BOLT |
| 1 | 15 | 2 | XNR0000527 | | SCHRAUBE | M6x20 | H.L. SOCKET HEAD BOLT |
| 1 | 16 | 1 | 140D66-3 | | SCHUTZHAUBE KPL. | DOLMAR INC. 17-21 | ROTARY COVER COMPLETE A |
| 1 | 16 | 1 | 140D65-5 | | SCHUTZHAUBE KPL. | Makita INC. 17-21 | ROTARY COVER COMPLETE A |
| 1 | 16 | 1 | 817T97-0 | | HINWEISSCHILD | | CAUTION LABEL |
| 1 | 17 | 1 | XNR0000541 | | KLEMMSCHELLE | | COVER SLEEVE |
| 1 | 18 | 2 | XNR0000517 | | SCHRAUBE | M6x45 | H.L.SOCKET HEAD BOLT |
| 1 | 19 | 2 | XNR0000543 | | FLACHSCHEIBE | 6 | FLAT WASHER |
| 1 | 20 | 2 | XNR0000542 | | 4 KANT-MUTTER | | SQUARE NUT |
| 1 | 21 | 2 | XNR0000516 | | SICHERUNGSMUTTER | | HARD LOCK NUT RIM |
| 1 | 23 | 1 | 140E11-4 | | SCHAFTROHR KPL. | DOLMAR | SHAFT PIPE COMPLETE A |
| 1 | 23 | 1 | 140D99-8 | | SCHAFTROHR KPL. | Makita | SHAFT PIPE COMPLETE B |
| 1 | 23 | 1 | 817U02-3 | | SICHERHEITSAUFKLEBER | DOLMAR | CAUTION LABEL |
| 1 | 23 | 1 | 817T85-7 | | SICHERHEITSAUFKLEBER | Makita | CAUTION LABEL |
| 1 | 24 | 1 | 327189-2 | | WELLE | | SHAFT A |
| 1 | 25 | 1 | 458732-7 | | DISTANZBUCHSE | | SPACER |
| 1 | 26 | 1 | 660893388 | | FIRMENSCHILD | DOLMAR LOGO | LABEL |
| 1 | 26 | 1 | 819312-8 | | FIRMENSCHILD | Makita LOGO | LABEL |
| 1 | 27 | 1 | 660961003 | | SICHERUNGSRING | S-7 | RETAINING RING |
| 1 | A01 | 2 | 424434-7 | | KAPPE | 24 | CAP |
| 1 | A02 | 1 | 940827000 | | WINKELSCHLÜSSEL | T27 | ANGLED SCREW DRIVER |

MB-CS, BR400MP



1 MB-CS, BR400MP
MB-CS, BR400MP

| | Zeichenerklärung | Key to symbols |
|--|--|---|
| => 1999999 2000000 => 2003.04 => TI 2003/07 Acc. = { m Corr. | Produktion bis Serien-Nr. Neues Teil ab Serien-Nr. Neues Teil ab Jahr / Monat Siehe Technische Information Jahr / Nr. Zubehör (nicht im Lieferumfang) Keine Serienausführung, jedoch verwendbar Beinhaltet Positions-Nr. Meterware Druckfehlerberichtigung | Production to serial number New part from serial number New part from Year / Month See Technical Information Year / No. Accessories (not included in the delivery inventory) No standard execution, may be used Contains item number Sold by the meter Error correction |
| | Änderungen vorbehalten | Specifications subject to change without notice |